



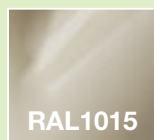
LEGENDA SIMBOLI E TABELLE
LÉGENDE SYMBOLES ET TABLEAUX
 SYMBOLS AND TABLES LEGEND

Ø1 Tubo - Diametro Esterno
Tuyau - diamètre externe
 Pipe - outside diameter

 Spessore
Spessore
 Thickness

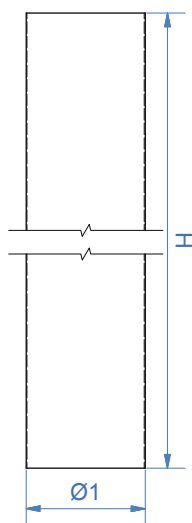
Ø2 Tubo con Bordo - Diametro Esterno
Tuyau avec bord - diamètre externe
 Pipe with edge - outside diameter

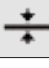

 Peso
Poids
 Weight



Verniciatura RAL1015 (a richiesta altre colorazioni)
Peinture RAL1015 (sur demande autres couleurs)
RAL1015 Painting (other colours upon request)

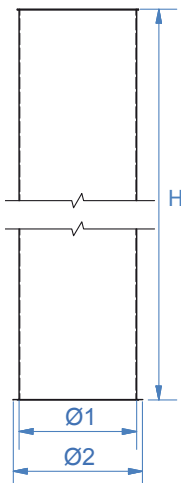
TUBO SENZA BORDO
TUYAU SANS BORDS
 PIPE WITHOUT EDGES





| Cod. | Ø 1 mm | H mm |  |  Kg | | | | |
|-----------------|-----------|---------|------------------------------------------------------------------------------------|-------------------------------------------------------------------------------------------|--|--|--|--|
| 111.201.121 | 105 | 2000 | 10/10 | 5,40 | | | | |
| 111.201.241 | 120 | 2000 | 10/10 | 6,00 | | | | |
| 111.201.124 | 105 | 2000 | 12/10 | 6,20 | | | | |
| 111.201.224 | 120 | 2000 | 12/10 | 7,20 | | | | |
| 111.201.324 | 150 | 2000 | 12/10 | 9,60 | | | | |
| 111.201.127 | 105 | 2000 | 15/10 | 7,60 | | | | |
| 111.201.227 | 120 | 2000 | 15/10 | 9,00 | | | | |
| 111.201.327 | 150 | 2000 | 15/10 | 11,00 | | | | |
| 111.201.427 (*) | 160 | 2000 | 15/10 | 12,00 | | | | |
| 111.201.527 (*) | 180 | 2000 | 15/10 | 13,50 | | | | |
| 111.201.727 | 200 | 2000 | 15/10 | 14,60 | | | | |
| 111.201.827 | 250 | 2000 | 15/10 | 18,40 | | | | |
| 111.201.927 | 300 | 2000 | 15/10 | 22,00 | | | | |

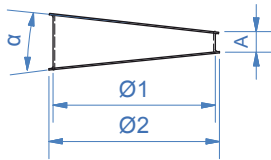
(*) = a richiesta - *sur demand* - on demand

TUBO CON BORDO
TUYAU AVEC BORDS
 PIPE WITH EDGES



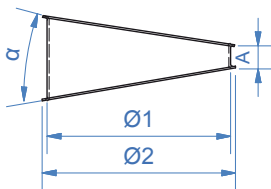
| Cod. | Ø 1 mm | Ø 2 mm | H mm |  |  Kg | | | |
|-------------|-----------|-----------|---------|---------------------------------------------------------------------------------------|---------------------------------------------------------------------------------------------|--|--|--|
| 111.203.121 | 105 | 113 | 2000 | 10/10 | 5,40 | | | |
| 111.203.241 | 120 | 128 | 2000 | 10/10 | 6,00 | | | |
| 111.203.124 | 105 | 113 | 2000 | 12/10 | 6,20 | | | |
| 111.203.224 | 120 | 128 | 2000 | 12/10 | 7,20 | | | |
| 111.203.324 | 150 | 158 | 2000 | 12/10 | 9,60 | | | |
| 111.203.127 | 105 | 113 | 2000 | 15/10 | 7,60 | | | |
| 111.203.227 | 120 | 128 | 2000 | 15/10 | 9,00 | | | |
| 111.203.327 | 150 | 158 | 2000 | 15/10 | 11,00 | | | |
| 111.203.727 | 200 | 208 | 2000 | 15/10 | 14,60 | | | |
| 111.203.827 | 250 | 258 | 2000 | 15/10 | 18,40 | | | |
| 111.203.927 | 300 | 308 | 2000 | 15/10 | 22,00 | | | |

SETTORE DI CURVA A 12°
SECTEUR DE COUDE 12°
 BEND SEGMENT 12°



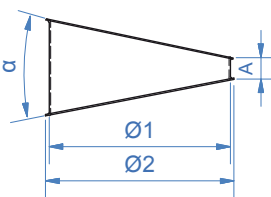
| Cod. | Ø 1 mm | Ø 2 mm | A mm | α° | ± | ⊞ Kg | | |
|-------------|-----------|-----------|---------|-----|-------|---------|--|--|
| 111.102.021 | 105 | 113 | 20 | 12° | 15/10 | 0,14 | | |
| 111.102.023 | 120 | 128 | 20 | 12° | 15/10 | 0,16 | | |
| 111.102.025 | 150 | 158 | 20 | 12° | 15/10 | 0,23 | | |
| 111.102.033 | 200 | 208 | 20 | 12° | 15/10 | 0,36 | | |
| 111.102.035 | 250 | 258 | 20 | 12° | 15/10 | 0,51 | | |
| 111.102.037 | 300 | 308 | 20 | 12° | 15/10 | 0,61 | | |

SETTORE DI CURVA A 18°
SECTEUR DE COUDE 18°
 BEND SEGMENT 18°



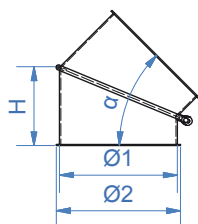
| Cod. | Ø 1 mm | Ø 2 mm | A mm | α° | ± | ⊞ Kg | | |
|-------------|-----------|-----------|---------|-----|-------|---------|--|--|
| 111.102.421 | 105 | 113 | 20 | 18° | 15/10 | 0,14 | | |
| 111.102.423 | 120 | 128 | 20 | 18° | 15/10 | 0,16 | | |
| 111.102.425 | 150 | 158 | 20 | 18° | 15/10 | 0,23 | | |
| 111.102.433 | 200 | 208 | 25 | 18° | 15/10 | 0,36 | | |
| 111.102.435 | 250 | 258 | 25 | 18° | 15/10 | 0,51 | | |
| 111.102.437 | 300 | 308 | 30 | 18° | 15/10 | 0,61 | | |

SETTORE DI CURVA A 22°
SECTEUR DE COUDE 22°
 BEND SEGMENT 22°



| Cod. | Ø 1 mm | Ø 2 mm | A mm | α° | ± | ⊞ Kg | | |
|-------------|-----------|-----------|---------|-----|-------|---------|--|--|
| 111.102.621 | 105 | 113 | 20 | 22° | 15/10 | 0,16 | | |
| 111.102.623 | 120 | 128 | 20 | 22° | 15/10 | 0,18 | | |
| 111.102.625 | 150 | 158 | 20 | 22° | 15/10 | 0,25 | | |
| 111.102.633 | 200 | 208 | 25 | 22° | 15/10 | 0,38 | | |
| 111.102.635 | 250 | 258 | 25 | 22° | 15/10 | 0,71 | | |
| 111.102.637 | 300 | 308 | 30 | 22° | 15/10 | 0,81 | | |

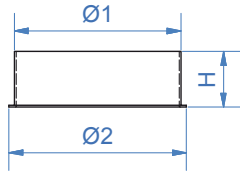
SETTORE DI CURVA GIREVOLE 0°÷ 45°
SECTEUR TOURNANTS 0°÷ 45°
 REVOLVING SEGMENT 0°÷ 45°



| Cod. | Ø 1 mm | Ø 2 mm | H mm | α° | ± | ⊞ Kg | | |
|-------------|-----------|-----------|---------|-----|-------|---------|--|--|
| 111.103.821 | 105 | 113 | 70 | 45° | 15/10 | 0,53 | | |
| 111.103.823 | 120 | 128 | 80 | 45° | 15/10 | 0,63 | | |
| 111.103.825 | 150 | 158 | 90 | 45° | 15/10 | 0,85 | | |
| 111.103.833 | 200 | 208 | 120 | 45° | 15/10 | 1,29 | | |

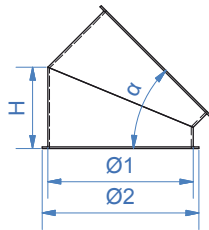


RACCORDO
RACCORD
UNION



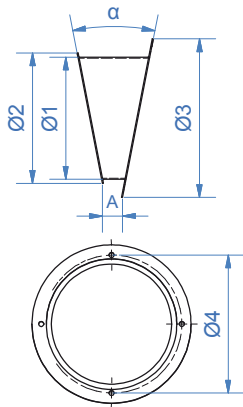
| Cod. | Ø 1 mm | Ø 2 mm | H mm | $\frac{+}{-}$ | $\frac{+}{-}$ Kg | | | |
|-------------|-----------|-----------|---------|---------------|---------------------|--|--|--|
| 111.109.121 | 105 | 113 | 100 | 15/10 | 0,43 | | | |
| 111.109.123 | 120 | 128 | 100 | 15/10 | 0,47 | | | |
| 111.109.125 | 150 | 158 | 100 | 15/10 | 0,63 | | | |
| 111.109.127 | 200 | 208 | 100 | 15/10 | 0,78 | | | |

SETTORE ROTONDO DI PARTENZA E DI ARRIVO 30°
SECTEUR D/A RONDS 30°
S/A ROUND SEGMENT 30°



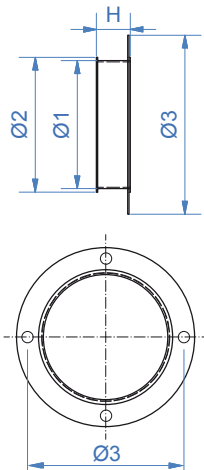
| Cod. | Ø 1 mm | Ø 2 mm | H mm | α° | $\frac{+}{-}$ | $\frac{+}{-}$ Kg | | |
|-------------|-----------|-----------|---------|-----|---------------|---------------------|--|--|
| 111.101.625 | 150 | 158 | 80 | 30° | 15/10 | 0,69 | | |
| 111.101.633 | 200 | 208 | 85 | 30° | 15/10 | 0,90 | | |
| 111.101.635 | 250 | 258 | 105 | 30° | 15/10 | 1,48 | | |
| 111.101.637 | 300 | 308 | - | 30° | 15/10 | - | | |

SEGMENTO DI GOMITO A FLANGIA
SECTEUR DE COUDE À BRIDES
FLANGIA ELBOW SEGMENT



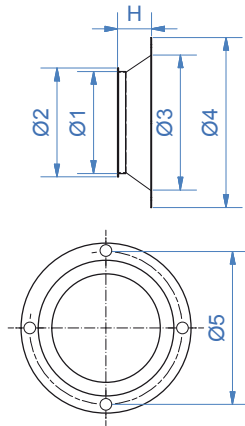
| Cod. | Ø 1 mm | Ø 2 mm | Ø 3 mm | Ø 4 mm | A mm | α° | $\frac{+}{-}$ | $\frac{+}{-}$ Kg | N° F |
|-------------|-----------|-----------|-----------|-----------|---------|-----|---------------|---------------------|------|
| 111.105.121 | 105 | 113 | 140 | 123 | 20 | 22° | 15/10 | 0,28 | 4 |
| 111.105.123 | 120 | 128 | 156 | 138 | 20 | 22° | 15/10 | 0,28 | 4 |
| 111.105.125 | 150 | 158 | 188 | 170 | 20 | 22° | 15/10 | 0,29 | 4 |
| 111.105.133 | 200 | - | - | - | 20 | 22° | 15/10 | - | 4 |

ANELLO DIRITTO A FLANGIA
ANNEAU DROIT À BRIDE
STRAIGHT RINGS



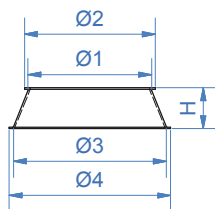
| Cod. | Ø 1 mm | Ø 2 mm | Ø 3 mm | Ø 4 mm | H mm | $\frac{+}{-}$ | $\frac{+}{-}$ Kg | N° F |
|-------------|-----------|-----------|-----------|-----------|---------|---------------|---------------------|------|
| 111.104.121 | 105 | 113 | 165 | 140 | 40 | 15/10 | 0,32 | 4 |
| 111.104.123 | 120 | 128 | 180 | 150 | 40 | 15/10 | 0,37 | 4 |
| 111.104.125 | 150 | 158 | 210 | 180 | 40 | 15/10 | 0,46 | 5 |
| 111.104.133 | 200 | 208 | 260 | 230 | 50 | 15/10 | 0,67 | 8 |
| 111.104.135 | 250 | 258 | 295 | - | 50 | 15/10 | 0,60 | - |
| 111.104.137 | 300 | 308 | 345 | - | 35 | 15/10 | 0,58 | - |

ANELLO CONICI A FLANGIA
TAPER FLANGIAD RINGS
 CÔNE À BRIDGES



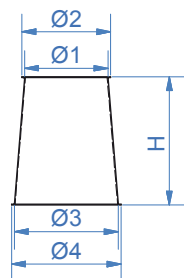
| Cod. | Ø 1 mm | Ø 2 mm | Ø 3 mm | Ø 4 mm | Ø 5 mm | H mm | $\frac{+}{-}$ | $\frac{+}{-}$ Kg | N° F |
|-------------|-----------|-----------|-----------|-----------|-----------|---------|---------------|---------------------|---------|
| 111.106.121 | 105 | 113 | 150 | 180 | 160 | 35 | 15/10 | 0,35 | 5 |
| 111.106.123 | 120 | 128 | 160 | 200 | 180 | 40 | 15/10 | 0,36 | 5 |
| 111.106.125 | 150 | 158 | 190 | 230 | 212 | 40 | 15/10 | 0,38 | 6 |

RIDUZIONI BASSE SIMMETRICHE
RÉDUCTION BASSE SYMÉTRIQUE
 SYMMETRICAL LOW REDUCTION



| Cod. | Ø 1 mm | Ø 2 mm | Ø 3 mm | Ø 4 mm | H mm | $\frac{+}{-}$ | $\frac{+}{-}$ Kg |
|-------------|-----------|-----------|-----------|-----------|---------|---------------|---------------------|
| 111.108.321 | 105 | 113 | 120 | 128 | 35 | 15/10 | 0,14 |
| 111.108.322 | 105 | 113 | 150 | 158 | 50 | 15/10 | 0,30 |
| 111.108.323 | 120 | 128 | 150 | 158 | 40 | 15/10 | 0,21 |
| 111.108.223 | 120 | - | 200 | - | - | 15/10 | - |
| 111.108.324 | 150 | 158 | 200 | 208 | 105 | 15/10 | 0,70 |
| 111.108.224 | 150 | 158 | 250 | - | - | 15/10 | - |
| 111.108.325 | 200 | 208 | 250 | 258 | 100 | 15/10 | 0,91 |

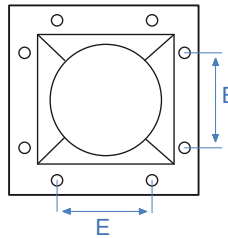
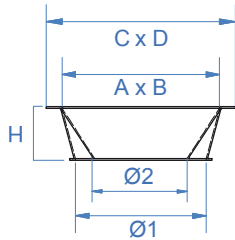
RIDUZIONE ALTA SIMMETRICA
RÉDUCTION HAUTE SYMÉTRIQUE
 SYMMETRICAL HIGH REDUCTION



| Cod. | Ø 1 mm | Ø 2 mm | Ø 3 mm | Ø 4 mm | H mm | $\frac{+}{-}$ | $\frac{+}{-}$ Kg |
|-------------|-----------|-----------|-----------|-----------|---------|---------------|---------------------|
| 111.108.121 | 105 | 113 | 120 | 128 | 120 | 15/10 | 0,60 |
| 111.108.123 | 120 | 128 | 150 | 158 | 185 | 15/10 | 1,16 |

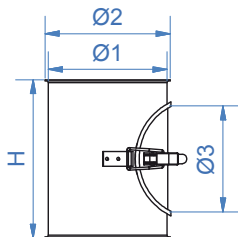


TRAMOGGIA SIMMETRICHE SMALTATE
TRÉMIE SYMÉTRIQUE PEINTE
 PAINTED SYMMETRICAL HOPPER



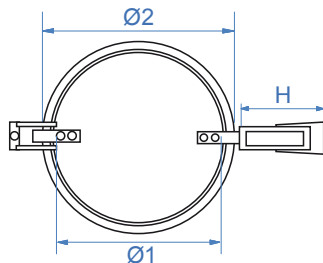
| Cod. | Ø 1 mm | Ø 2 mm | AxB mm | CxD mm | E mm | H mm | ± mm | Kg | N° F | |
|-------------|-----------|-----------|-----------|-----------|---------|---------|---------|------|---------|--|
| 111.125.042 | 105 | 113 | 120x120 | 162x162 | - | 40 | 15/10 | 0,33 | - | |
| 111.125.044 | 105 | 113 | 140x140 | 200x200 | - | 63 | 15/10 | 0,53 | - | |
| 111.125.046 | 105 | 113 | 160x160 | 220x220 | 100 | 75 | 15/10 | 0,91 | 8 ø 5 | |
| 111.125.141 | 120 | 128 | 140x140 | 200x200 | - | 60 | 15/10 | 0,53 | - | |
| 111.125.501 | 120 | 128 | 160x160 | 220x220 | 100 | 65 | 15/10 | 0,44 | 8 ø 5 | |
| 111.125.505 | 120 | 128 | 200x200 | 260x260 | 100 | 90 | 15/10 | 1,25 | 8 ø 5 | |
| 111.125.601 | 150 | 158 | 160x160 | 220x220 | - | 75 | 15/10 | 0,71 | - | |
| 111.125.241 | 150 | 158 | 180x180 | 240x240 | - | 70 | 15/10 | 0,75 | - | |
| 111.125.603 | 150 | 158 | 200x200 | 260x260 | 100 | 80 | 15/10 | 0,92 | 8 ø 10 | |
| 111.125.623 | 150 | 158 | 240x240 | 300x300 | - | 105 | - | - | - | |
| 111.125.701 | 200 | 208 | 200x200 | 260x260 | 100 | 75 | 15/10 | 0,95 | 8 ø 10 | |
| 111.125.703 | 200 | 208 | 250x250 | 310x310 | 100 | 80 | 15/10 | 1,19 | 12 ø 10 | |
| 111.125.801 | 250 | 258 | 250x250 | 310x310 | 100 | 105 | 15/10 | 1,43 | 12 ø 10 | |
| 111.125.901 | 300 | 308 | 300x300 | 360x360 | 100 | 90 | 15/10 | 1,49 | 12 ø 10 | |

TUBO DI ISPEZIONE CON SPORTELLO
TUYAU D'INSPECTION AVEC PORTE
 INSPECTION PIPE WITH DOOR



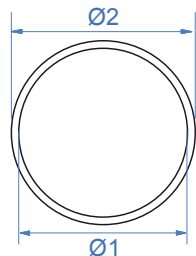
| Cod. | Ø 1 mm | Ø 2 mm | Ø 3 mm | H mm | ± mm | Kg | | | |
|-------------|-----------|-----------|-----------|---------|---------|------|--|--|--|
| 111.114.121 | 105 | 113 | 120 | 200 | 15/10 | 0,80 | | | |
| 111.114.123 | 120 | 128 | 120 | 200 | 15/10 | 1,00 | | | |
| 111.114.125 | 150 | 158 | 120 | 200 | 15/10 | 1,20 | | | |
| 111.114.127 | 200 | 208 | 120 | 200 | 15/10 | 1,60 | | | |

SPORTELLO CON GANCIO
PORTE AVEC CROCHET
 DOOR WITH HOOK



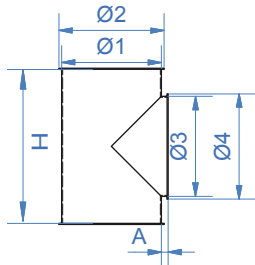
| Cod. | Ø 1 mm | Ø 2 mm | H mm | | | | | |
|-------------|-----------|-----------|---------|--|--|--|--|--|
| 111.114.998 | 120 | 135 | 80 | | | | | |

GUARNIZIONE PER SPORTELLO IN GOMMA PARA NERA
GARNITURE POUR PORTE EN CAOUTCHOUC NOIR
 BLACK RUBBER DOOR SEAL



| Cod. | Ø 1 mm | Ø 2 mm | | | | | | |
|-------------|-----------|-----------|--|--|--|--|--|--|
| 111.114.999 | 120 | 140 | | | | | | |

TUBO ISPEZIONE PER TAPPO
TUYAU D'INSPECTION POUR BOUCHON
INSPECTION PIPE FOR PLUG

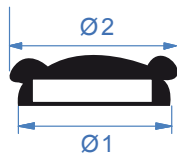


| Cod. | Ø 1 mm | Ø 2 mm | Ø 3 mm | Ø 4 mm | A mm | H mm | ± | ⊞ Kg | |
|-------------|-----------|-----------|-----------|-----------|---------|---------|-------|---------|--|
| 111.115.121 | 105 | 113 | 105 | 113 | 10 | 185 | 15/10 | 0,80 | |
| 111.115.123 | 120 | 128 | 120 | 128 | 10 | 200 | 15/10 | 0,80 | |
| 111.115.125 | 150 | 158 | 150 | 158 | 10 | 235 | 15/10 | 1,20 | |
| 111.115.133 | 200 | 208 | 150 | 158 | 30 | 215 | 15/10 | 1,80 | |
| 111.115.135 | 250 | 258 | 150 | 158 | 30 | 280 | 15/10 | 2,20 | |
| 111.115.137 | 300 | 308 | 150 | 158 | 50 | 295 | 15/10 | 3,60 | |

TAPPO IN GOMMA NERA
BOUCHON EN CAOUTCHOUC NOIR
BLACK RUBBER CAP



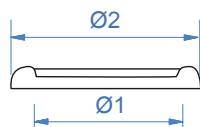
Tipo Maschio
Type Male
Male Type



| Cod. | Ø 1 mm | Ø 2 mm | | | | | |
|-------------|-----------|-----------|--|--|--|--|--|
| 111.128.601 | 105 | 125 | | | | | |
| 111.128.603 | 120 | 130 | | | | | |
| 111.128.605 | 150 | 175 | | | | | |

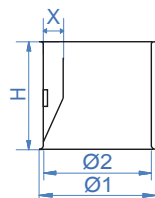


Tipo Femmina
Type Femelle
Female Type



| Cod. | Ø 1 mm | Ø 2 mm | | | | | |
|-------------|-----------|-----------|--|--|--|--|--|
| 111.128.701 | 105 | 120 | | | | | |
| 111.128.703 | 120 | 130 | | | | | |
| 111.128.705 | 150 | 165 | | | | | |
| 111.128.713 | 200 | 215 | | | | | |

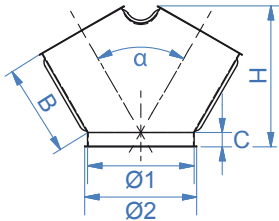
PRESA ASPIRAZIONE ARIA
PRISE D'ASPIRATION D'AIR
AIR INTAKE



| Cod. | Ø 1 mm | Ø 2 mm | X mm | H mm | ± | ⊞ Kg | |
|-------------|-----------|-----------|---------|---------|-------|---------|--|
| 111.104.821 | 105 | 113 | 25 | 85 | 15/10 | 0,40 | |
| 111.104.823 | 120 | 128 | 25 | 100 | 15/10 | 0,40 | |
| 111.104.825 | 150 | 158 | 25 | 100 | 15/10 | 0,65 | |
| 111.104.827 | 200 | - | - | - | 15/10 | - | |

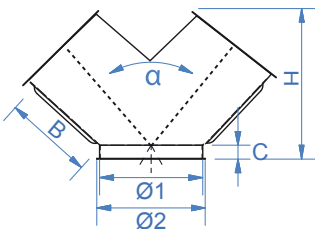


GIUNZIONI SIMMETRICHE A 60°
JOINT SYMÉTRIQUE À 60°
 SYMMETRICAL 60° COUPLINGS



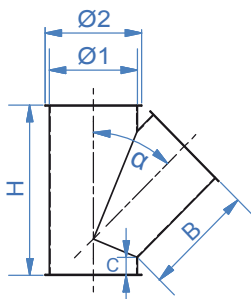
| Cod. | Ø 1 mm | Ø 2 mm | H mm | α° | B mm | C mm | $\frac{+}{-}$ | $\frac{+}{-}$ Kg | |
|-------------|-----------|-----------|---------|-----|---------|---------|---------------|---------------------|--|
| 111.118.121 | 105 | 113 | 220 | 60° | 180 | 15 | 15/10 | 1,20 | |
| 111.118.123 | 120 | 128 | 240 | 60° | 190 | 15 | 15/10 | 1,60 | |
| 111.118.125 | 150 | 158 | 280 | 60° | 205 | 30 | 15/10 | 2,00 | |
| 111.118.133 | 200 | 208 | 280 | 60° | 180 | 30 | - | 2,80 | |
| 111.118.135 | 250 | 258 | 350 | 60° | 215 | 30 | - | 3,80 | |
| 111.118.137 | 300 | 308 | - | 60° | - | - | - | - | |

GIUNZIONI SIMMETRICHE A 80°
JOINT SYMÉTRIQUE A 80°
 SYMMETRICAL COUPLING 80°



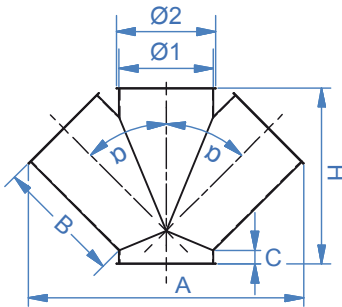
| Cod. | Ø 1 mm | Ø 2 mm | H mm | α° | B mm | C mm | $\frac{+}{-}$ | $\frac{+}{-}$ Kg | |
|-------------|-----------|-----------|---------|-----|---------|---------|---------------|---------------------|--|
| 111.118.221 | 105 | 113 | 210 | 80° | 125 | 25 | 15/10 | 1,20 | |
| 111.118.223 | 120 | 128 | 230 | 80° | 140 | 30 | 15/10 | 1,40 | |
| 111.118.225 | 150 | 158 | 260 | 80° | 150 | 40 | 15/10 | 2,00 | |
| 111.118.233 | 200 | - | - | 80° | - | - | 15/10 | - | |

GIUNZIONI 30°-40°-45°-60°-75°
JOINT À 30°-40°-45°-60°-75°
 30°-40°-45°-60°-75° COUPLING



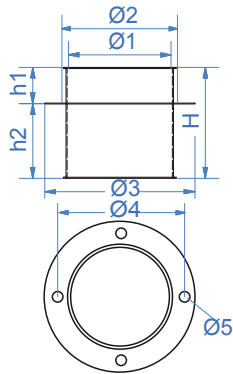
| Cod. | Ø 1 mm | Ø 2 mm | H mm | B mm | C mm | α° | $\frac{+}{-}$ | $\frac{+}{-}$ Kg | |
|-------------|-----------|-----------|---------|---------|---------|-----|---------------|---------------------|--|
| 111.120.121 | 105 | 113 | 300 | 225 | 40 | 30° | 15/10 | 1,60 | |
| 111.120.321 | 105 | 113 | 230 | 165 | 30 | 40° | 15/10 | 1,28 | |
| 111.119.121 | 105 | 113 | 220 | 140 | 35 | 45° | 15/10 | 1,15 | |
| 111.120.621 | 105 | 113 | 195 | 105 | 35 | 60° | 15/10 | 0,74 | |
| 111.120.821 | 105 | 113 | 145 | 45 | 23 | 75° | 15/10 | 1,05 | |
| 111.120.123 | 120 | 128 | 300 | 250 | 20 | 30° | 15/10 | 1,93 | |
| 111.120.323 | 120 | 128 | 270 | 195 | 30 | 40° | 15/10 | 1,70 | |
| 111.119.123 | 120 | 128 | 250 | 165 | 30 | 45° | 15/10 | 1,56 | |
| 111.120.623 | 120 | 128 | 235 | 130 | 35 | 60° | 15/10 | 1,45 | |
| 111.120.823 | 120 | 128 | 185 | 60 | 30 | 75° | 15/10 | 1,05 | |
| 111.120.125 | 150 | 158 | 370 | 295 | 25 | 30° | 15/10 | 2,82 | |
| 111.120.325 | 150 | 158 | 345 | 245 | 40 | 40° | 15/10 | 2,71 | |
| 111.119.125 | 150 | 158 | 290 | 200 | 30 | 45° | 15/10 | 2,22 | |
| 111.120.625 | 150 | 158 | 250 | 130 | 30 | 60° | 15/10 | 1,82 | |
| 111.120.825 | 150 | 158 | 185 | 65 | 15 | 75° | 15/10 | 1,01 | |
| 111.119.133 | 200 | 208 | 370 | 240 | 40 | 45° | 15/10 | 3,59 | |
| 111.119.135 | 250 | 258 | 445 | 290 | 50 | 45° | 15/10 | 5,35 | |
| 111.119.137 | 300 | 308 | - | - | - | 45° | 15/10 | - | |

GIUNZIONI DOPPIE
JOINT DOUBLE
DOUBLE COUPLINGS



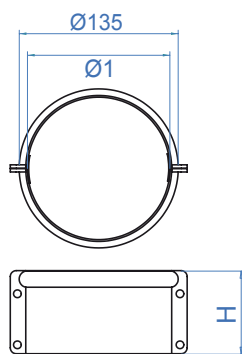
| Cod. | Ø 1 mm | Ø 2 mm | H mm | α° | A mm | B mm | C mm | ± | ⊞ Kg | |
|-------------|-----------|-----------|---------|-----|---------|---------|---------|-------|---------|--|
| 111.121.121 | 105 | 113 | 205 | 45° | 305 | 140 | 30 | 15/10 | 1,4 | |
| 111.121.123 | 120 | 128 | 250 | 45° | 350 | 165 | 30 | 15/10 | 2,0 | |
| 111.121.125 | 150 | 158 | 280 | 45° | 420 | 200 | 20 | 15/10 | 3,0 | |
| 111.121.127 | 200 | 208 | 370 | 45° | 550 | 240 | 40 | 15/10 | 4,6 | |

TUBO PASSA PAVIMENTO
TUYAU PASSE-PAVEMENT
FLOOR-CROSSING PIPE



| Cod. | Ø 1 mm | Ø 2 mm | Ø 3 mm | Ø 4 mm | H mm | h1 mm | h2 mm | ± | ⊞ Kg | n°F |
|-------------|-----------|-----------|-----------|-----------|---------|----------|----------|-------|---------|-----|
| 111.104.621 | 105 | 113 | 160 | - | 150 | 50 | 100 | 15/10 | - | 4 |
| 111.104.623 | 120 | 128 | 180 | - | 150 | 50 | 100 | 15/10 | - | 4 |
| 111.104.625 | 150 | 158 | 200 | - | 150 | 50 | 100 | 15/10 | - | 5 |
| 111.104.633 | 200 | 208 | 260 | - | 150 | 50 | 100 | 15/10 | - | 8 |
| 111.104.635 | 250 | - | - | - | - | - | - | 15/10 | - | - |
| 111.104.637 | 300 | - | - | - | - | - | - | 15/10 | - | - |

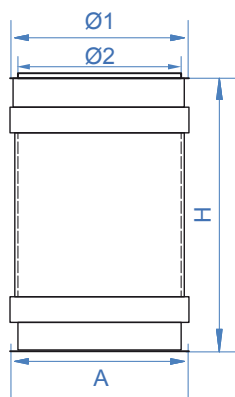
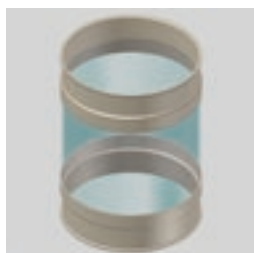
MANICOTTO CON CRAVATTA
MANCHON AVEC CRAVATE
TIED SLEEVE



| Cod. | Ø 1 mm | H mm | ± | ⊞ Kg | | | |
|-------------|-----------|---------|-------|---------|--|--|--|
| 111.111.443 | 120 | 70 | 20/10 | 0,80 | | | |

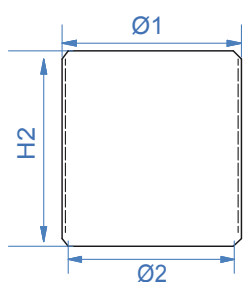


SPIE VISIVE IN PLEXIGLAS
CYLINDRE DE VISITE EN PLEXIGLAS
 PLEXIGLAS SIGHT CYLINDER



| Cod. | Ø 1 mm | Ø 2 mm | A mm | H mm | ± Kg | | |
|-------------|-----------|-----------|---------|---------|---------|------|--|
| 111.128.961 | 105 | 113 | 113 | 180 | 15/10 | 0,60 | |
| 111.128.963 | 120 | 128 | 128 | 180 | 15/10 | 0,80 | |
| 111.128.965 | 150 | 158 | 158 | 180 | 15/10 | 1,00 | |
| 111.128.973 | 200 | 208 | 208 | 320 | 15/10 | 1,80 | |

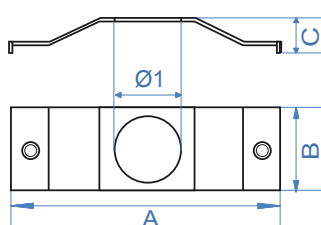
TUBO IN PLEXIGLAS PER SPIA VISIVA
TUYAU EN PLEXIGLASS POUR CYLINDRE DE REGARD
 SIGHT CYLINDER PLEXIGLASS PIPE



| Cod. | Ø 1 mm | Ø 2 mm | H2 mm | ± Kg | | |
|-------------|-----------|-----------|----------|---------|------|--|
| 111.128.422 | Ø 105 | 110 | 100 | 150 | 0,20 | |
| 111.128.424 | Ø 120 | 125 | 115 | 150 | 0,40 | |
| 111.128.426 | Ø 150 | 160 | 150 | 150 | 0,40 | |
| 111.128.428 | Ø 200 | 210 | 220 | 240 | 0,60 | |

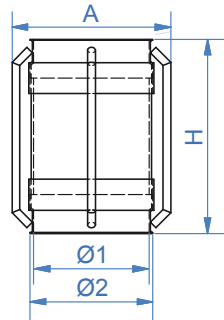


STAFFA PER ATTACCO SENSORE INOX
ÉTRIER POUR ATTAQUE SENSEUR INOXYDABLE
 STAINLESS STEEL SENSOR ATTACK BRACKET



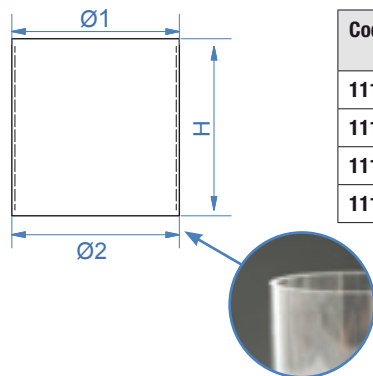
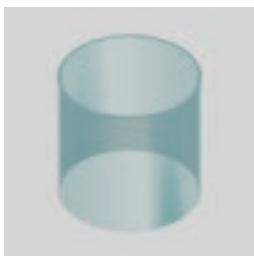
| Cod. | A mm | B mm | C mm | Ø 1 mm | ± Kg | |
|-------------|---------|---------|---------|-----------|---------|------|
| 111.128.622 | Ø 105 | 153 | 50 | 35 | 1,20 | 0,20 |
| 111.128.624 | Ø 120 | 153 | 50 | 35 | 1,20 | 0,20 |
| 111.128.628 | Ø 150 | 153 | 50 | 35 | 1,20 | 0,20 |
| 111.128.630 | Ø 200 | 230 | 50 | 35 | 1,20 | 0,20 |

SPIA VISIVA CON TONDINO
CYLINDRE DE REGARD AVEC TIGE
SIGHT CYLINDER WITH ROD IRON



| Cod. | Ø 1 mm | Ø 2 mm | A mm | H mm | ± | Kg | | |
|-------------|-----------|-----------|---------|---------|-------|-----|--|--|
| 111.128.921 | 105 | 113 | 140 | 250 | 15/10 | 1,2 | | |
| 111.128.923 | 120 | 128 | 150 | 250 | 15/10 | 1,2 | | |
| 111.128.925 | 150 | 158 | 200 | 250 | 15/10 | 1,6 | | |
| 111.128.933 | 200 | 208 | 210 | 305 | 15/10 | 1,7 | | |

TUBO IN PLEXIGLAS PER SPIA VISIVA CON TONDINO
TUYAU EN PLEXIGLASS POUR CYLINDRE DE VISITE AVEC TIGE
SIGHT CYLINDER PLEXIGLASS PIPE WITH ROD IRON



| Cod. | Ø 1 mm | Ø 2 mm | H mm | Kg | | |
|-------------|-----------|-----------|---------|-----|------|--|
| 111.128.402 | Ø 105 | 110 | 100 | 150 | 0,20 | |
| 111.128.404 | Ø 120 | 125 | 115 | 150 | 0,40 | |
| 111.128.406 | Ø 150 | 160 | 150 | 150 | 0,40 | |
| 111.128.408 | Ø 200 | 205 | 195 | 200 | - | |

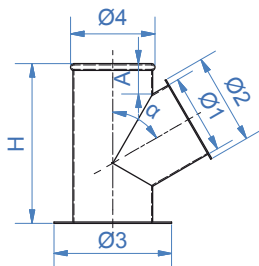
ANELLO IN GOMMA BIANCA PER SPIA VISIVA
COLLIER EN CAOUTCHOUC BLANC POUR CYLINDRE DE REGARD
SIGHT CYLINDER WHITE RUBBER RING



| Cod. | H mm | Ø1 mm | ± | | | |
|-------------|---------|----------|-----|---|--|--|
| 111.128.501 | Ø 105 | 40 | 110 | 5 | | |
| 111.128.503 | Ø 120 | 40 | 125 | 5 | | |
| 111.128.505 | Ø 150 | 40 | 160 | 5 | | |
| 111.128.513 | Ø 200 | 70 | 205 | 5 | | |

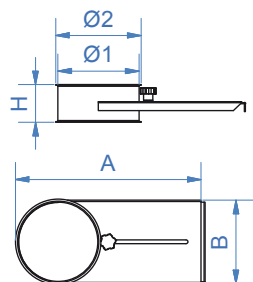


RACCORDO PLANSCHISTER
RACCORD PLANSICHTER
 PLANSICHTER UNION



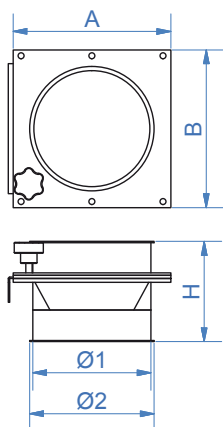
| Cod. | Ø 1 mm | Ø 2 mm | Ø 3 mm | Ø 4 mm | α° | H mm | ± | ⊞ Kg | |
|--------------------|-----------|-----------|-----------|-----------|-----|---------|-------|---------|--|
| 111.104.321 | 105 | 113 | 180 | 120 | 60° | 205 | 15/10 | 1,40 | |
| 111.104.323 | 120 | 128 | - | - | 60° | . | 15/10 | - | |
| 111.104.325 | 150 | 158 | - | - | 60° | - | 15/10 | - | |

SETTORE CON SERRANDA
SEGMENT WITH VALVE
 SECTEUR AVEC VANNE



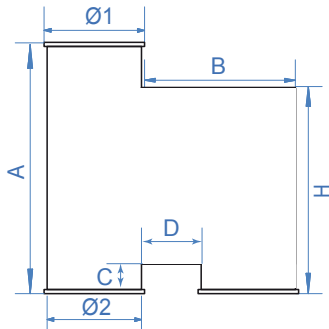
| Cod. | Ø 1 mm | Ø 2 mm | H mm | A mm | B mm | ± | ⊞ Kg | |
|--------------------|-----------|-----------|---------|---------|---------|-------|---------|--|
| 111.113.121 | 105 | 113 | 50 | 280 | 110 | 15/10 | 0,80 | |
| 111.113.123 | 120 | 128 | 60 | 280 | 125 | 15/10 | 1,00 | |
| 111.113.125 | 150 | 158 | 70 | 380 | 155 | 15/10 | 1,60 | |
| 111.113.133 | 200 | 208 | 70 | 440 | 205 | 15/10 | 2,40 | |

SERRANDA REGOLATRICE PER TUBO
PIPE ADJUSTABLE VALVE
 VANNE DE RÉGLAGE POUR TUYAU



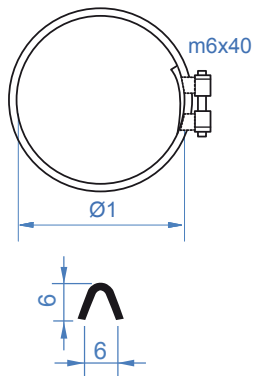
| Cod. | Ø 1 mm | Ø 2 mm | H mm | A mm | B mm | ± | ⊞ Kg | |
|--------------------|-----------|-----------|---------|---------|---------|-------|---------|--|
| 111.113.321 | 105 | 113 | - | - | - | 15/10 | - | |
| 111.113.323 | 120 | 128 | - | - | - | 15/10 | - | |
| 111.113.325 | 150 | 158 | 140 | 200 | 200 | 15/10 | 3,20 | |
| 111.113.333 | 200 | 208 | - | - | - | 15/10 | - | |

CASSETTA AUTO FRENANTE
SELF-BREAKING BOX
AMORTISSEUR DE CHUTE



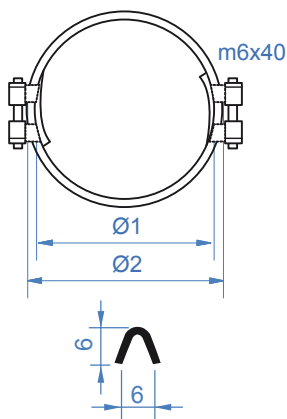
| Cod. | Ø 1 mm | Ø 2 mm | A mm | B mm | C mm | D mm | H mm | ± | Kg |
|-------------|-----------|-----------|---------|---------|---------|---------|---------|-------|------|
| 111.112.105 | 105 | 113 | 280 | 150 | 30 | 40 | 255 | 15/10 | 2,80 |
| 111.112.120 | 120 | 128 | 280 | 150 | 50 | 30 | 255 | 15/10 | 3,20 |
| 111.112.150 | 150 | 158 | 385 | 200 | 50 | 40 | 355 | 15/10 | 5,40 |

ANELLO DI GIUNZIONE INOX AISI 304 CON SORMONTO AD 1 VITE
COLLIER DE JONCTION 1 VIS INOX AISI 304 AVEC CHEVAUCHEMENT
AISI 304 STAINLESS STEEL 1-SCREX COUPLING RING WITH OVERLAP



| Cod. | Ø 1 mm | ± | Kg |
|-------------|-----------|-----|------|
| 181.107.105 | 105 | 0,6 | 0,04 |
| 181.107.113 | 113 | 0,6 | 0,04 |
| 181.107.120 | 120 | 0,6 | 0,04 |
| 181.107.130 | 130 | 0,6 | 0,04 |
| 181.107.150 | 150 | 0,6 | 0,05 |
| 181.107.160 | 160 | 0,6 | 0,04 |
| 181.107.200 | 200 | 0,6 | 0,06 |
| 181.107.210 | 210 | 0,6 | 0,06 |
| 181.107.250 | 250 | 0,6 | 0,07 |
| 181.107.300 | 300 | 0,6 | 0,07 |

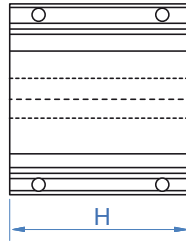
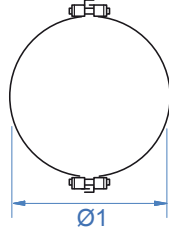
ANELLO ZINCATO CON 2 VITI E SORMONTO
COLLIER DE JONCTION 2 VIS GALVANISÉ AVEC CHEVAUCHEMENT
GALVANIZED 2-SCREW COUPLING RING WITH OVERLAP



| Cod. | Ø 1 mm | ± | Kg |
|-------------|-----------|-----|------|
| 181.108.105 | 105 | 0,6 | 0,04 |
| 181.108.120 | 120 | 0,6 | 0,04 |
| 181.108.150 | 150 | 0,6 | 0,04 |
| 181.108.200 | 200 | 0,6 | 0,04 |
| 181.108.250 | 250 | 0,6 | 0,04 |

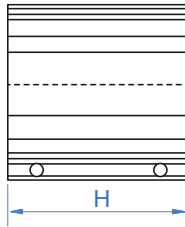
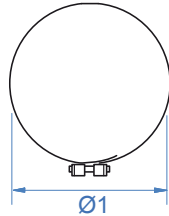


GIUNTO A MANICOTTO IN 2 METÀ
JOINT A MANCHON EN 2 MOITIÉ
 2-HALF COUPLING SLEEVE



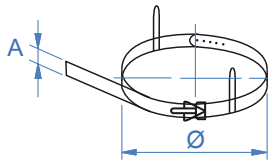
| Cod. | Ø 1 mm | H mm | $\frac{+}{-}$ | $\frac{+}{-}$ Kg | |
|-------------|-----------|---------|---------------|---------------------|--|
| 111.110.323 | 120 | 190 | 15/10 | 1,20 | |
| 111.110.325 | 150 | 190 | 15/10 | 1,42 | |
| 111.110.333 | 200 | 190 | 25/10 | 3,08 | |
| 111.110.335 | 250 | 190 | 25/10 | 3,68 | |

GIUNTO A MANICOTTO STAMPATO ZINCATO
JOINT A MANCHON EMBOUTI GALVANISÉ
 GALVANIZED PRESSED COUPLING SLEEVE



| Cod. | Ø 1 mm | H mm | $\frac{+}{-}$ | $\frac{+}{-}$ Kg | |
|-------------|-----------|---------|---------------|---------------------|--|
| 111.110.801 | 105 | 200 | 15/10 | 1,42 | |
| 111.110.803 | 120 | 200 | 15/10 | 1,78 | |
| 111.110.805 | 150 | 200 | 15/10 | 1,61 | |
| 111.110.813 | 200 | 200 | 15/10 | 1,98 | |
| 111.110.815 | 250 | 200 | 15/10 | 2,32 | |
| 111.110.817 | 300 | 250 | 15/10 | 3,51 | |

ALLACCIA SACCO
CLÉ D'ENSACHOIR
 SACK-BUCKLE



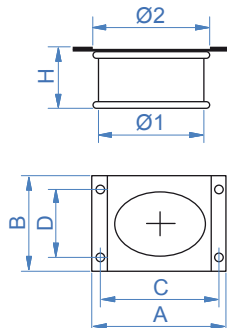
| Cod. | Ø mm | A mm | $\frac{+}{-}$ Kg | | | | | | |
|-------------|---------|---------|---------------------|--|--|--|--|--|--|
| 111.129.485 | 150 | 30 | - | | | | | | |
| 111.129.489 | 200 | 30 | - | | | | | | |
| 111.129.492 | 220 | 30 | - | | | | | | |
| 111.129.495 | 250 | 30 | - | | | | | | |
| 111.129.497 | 300 | 30 | - | | | | | | |
| 111.129.499 | 400 | 30 | - | | | | | | |

GANCIO PER ALLACCIA SACCHI
CROCKET POUR CLÉ D'ENSACHOIR
 SACK-BUCKLE HOOK



| Cod. | $\frac{+}{-}$ Kg | | | | | | | | |
|-------------|---------------------|--|--|--|--|--|--|--|--|
| 111.129.581 | - | | | | | | | | |

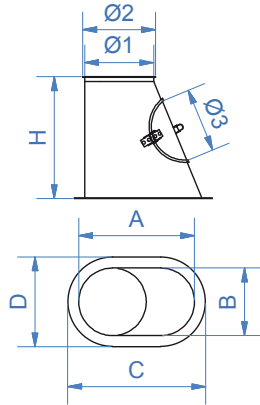
BOCCASACCO CON SERRANDA
ENSACHOIR AVEC VANNE
 SACK FILLING SLEEVE WITH SHUTTER



| Cod. | Ø 1 mm | Ø 2 mm | A mm | B mm | C mm | D mm | H mm | $\frac{+}{-}$ | $\frac{+}{-}$ Kg | n°F | |
|-------------|-----------|-----------|---------|---------|---------|---------|---------|---------------|---------------------|-----|--|
| 111.129.385 | 150 | 165 | 215 | 215 | 192 | 160 | 110 | 15/10 | - | 4 | |
| 111.129.392 | 220 | 245 | 300 | 300 | 275 | 260 | 110 | 15/10 | - | 4 | |
| 111.129.395 | 250 | 275 | 330 | 330 | 300 | 300 | 110 | 15/10 | - | 6 | |
| 111.129.397 | 300 | 315 | 380 | 380 | 355 | 340 | 110 | 15/10 | - | 6 | |

SCARPETTA CON SPORTELLO

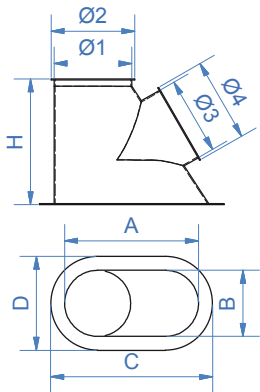
TESTO MANCA
TESTO MANCA



| Cod. | Ø 1 mm | Ø 2 mm | Ø 3 mm | A mm | B mm | C mm | D mm | H mm | ± | ⬇ | Kg |
|-------------|-----------|-----------|-----------|---------|---------|---------|---------|---------|-------|-----|----|
| 111.117.121 | 105 | 113 | 105 | 210 | 105 | 250 | 145 | 170 | 15/10 | 2,1 | |
| 111.117.123 | 120 | 128 | 120 | 215 | 120 | 250 | 155 | 190 | 15/10 | 2,7 | |
| 111.117.125 | 150 | 158 | 150 | 255 | 153 | 300 | 195 | 265 | 15/10 | 3,9 | |

SCARPETTA PER TAPPO

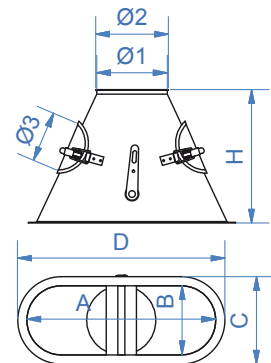
TESTO MANCA
TESTO MANCA



| Cod. | Ø 1 mm | Ø 2 mm | Ø 3 mm | Ø 4 mm | A mm | B mm | C mm | D mm | H mm | ± | ⬇ | Kg |
|-------------|-----------|-----------|-----------|-----------|---------|---------|---------|---------|---------|-------|-----|----|
| 111.117.321 | 105 | 113 | 105 | 113 | 210 | 105 | 250 | 145 | 170 | 15/10 | 2,1 | |
| 111.117.323 | 120 | 128 | 120 | 128 | 215 | 120 | 250 | 155 | 190 | 15/10 | 2,7 | |
| 111.117.325 | 150 | 158 | 150 | 158 | - | - | - | - | 15/10 | 3,9 | | |

VALVOLA FACOLTATIVA CON SPORTELLO PER COCCLEE

BOÎTE SYMÉTRIQUE AVEC POIGNÉE POUR VIS
SYMMETRICAL VALVE WITH HANDLE FOR SCREWS



| Cod. | Ø 1 mm | Ø 2 mm | Ø 3 mm | A mm | B mm | C mm | D mm | H mm | ± | ⬇ | Kg |
|-------------|-----------|-----------|-----------|---------|---------|---------|---------|---------|-------|-----|----|
| 111.116.121 | 105 | 113 | 140 | 275 | 105 | 145 | 315 | 215 | 15/10 | 2,2 | |
| 111.116.123 | 120 | 128 | 140 | 360 | 120 | 160 | 400 | 250 | 15/10 | 2,8 | |
| 111.116.125 | 150 | 158 | 140 | 410 | 150 | 190 | 455 | 290 | 15/10 | 4,2 | |