

## BTL12-200 (12V / 200Ah)

BTL series is a general-purpose battery with 10 years design life in float service. With updated AGM valve regulated technology and high purity raw materials, the BTL series battery maintains high consistency for better performance and reliable standby service life. It is suitable for UPS, DC-power systems, emergency light and security system applications.



Specifications		
<b>Nominal Voltage</b>	12V	
<b>Nominal Capacity</b>	200.0Ah	
<b>Dimensions</b>	Length	522 ± 2mm
	Width	240 ± 2mm
	Height	219 ± 2mm
	Total height (with terminal)	224 ± 2mm
<b>Approx. Weight</b>	60.0kg	
<b>Terminals</b>	F10, M8 screw terminals	
<b>Container Material</b>	Acrylnitril-Butadien-Styrol (ABS)	
<b>Permitted installation position</b>	Max. 90° to upright normal position (see picture above right)	
<b>Rated Capacity</b>	212.0Ah	20h discharge, 1.80V / cell, 25°C
	200.0Ah	10h discharge, 1.80V / cell, 25°C
	178.5Ah	5h discharge, 1.75V / cell, 25°C
	155.1Ah	3h discharge, 1.75V / cell, 25°C
<b>Max. Discharge Current</b>	2000A (5s)	
<b>Internal Resistance</b>	Approx. 4mΩ	
<b>Operating temperature range</b>	Discharge	-20 ~ 60°C
	Charge	0 ~ 50°C
	Storage (charged)	-20 ~ 60°C
<b>Recommended operating temperature</b>	Approx. 20°C	
<b>Max. charging current</b>	60A	
<b>Charging voltage</b>	<b>Boost charge</b>	Voltage 14.4 V ~ 15.0V @ 25°C
	<b>Float charging</b>	Temperature coefficient -30mV/°C
<b>Capacity affected by temperature</b>	40°C	104%
	25°C	100%
	0°C	83%
<b>Self-discharge</b>	EFFEKTA BTL series batteries should be recharged at least every 6 months when stored at 25°C. At higher temperatures, the time interval is shortened.	

Discharge at constant current (ampere) at 25°C											
F.V/time	10min	15min	30min	1h	2h	3h	4h	5h	8h	10h	20h
1.85V/cell	325.0	265.8	167.6	102.0	63.6	47.8	39.2	33.4	22.7	19.4	10.9
1.80V/cell	360.8	291.2	180.8	108.7	66.9	50.0	40.9	34.7	23.4	20.0	10.8
1.75V/cell	389.3	311.2	191.2	113.9	69.4	51.7	42.2	35.7	24.0	20.5	10.7
1.70V/cell	411.7	326.8	199.1	117.8	71.3	53.0	43.2	36.5	24.5	20.8	10.6
1.65V/cell	429.0	338.8	205.2	120.9	72.7	54.0	43.9	37.1	24.8	21.1	10.4
1.60V/cell	442.2	347.9	209.8	123.1	73.8	54.7	44.4	37.5	25.1	21.3	10.1

Discharge at constant power (watts / cell) at 25°C											
F.V/time	10min	15min	30min	1h	2h	3h	4h	5h	8h	10h	20h
1.85V/cell	614	507	325	200	126	94.7	77.8	66.5	45.4	38.9	20.3
1.80V/cell	669	547	347	211	131	98.7	80.9	68.9	46.9	40.1	20.8
1.75V/cell	710	577	363	220	135	102	83.1	70.7	47.9	41.0	21.2
1.70V/cell	737	597	375	227	139	104	84.7	71.9	48.7	41.7	21.5
1.65V/cell	760	614	384	232	141	105	86.0	72.9	49.3	42.2	21.7
1.60V/cell	763	617	387	234	142	106	86.6	73.4	49.7	42.5	21.9

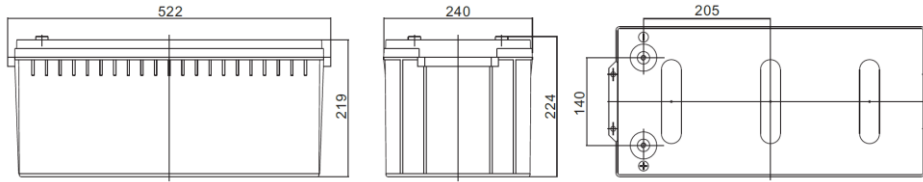
### Dimensions

# EFFEKTA®

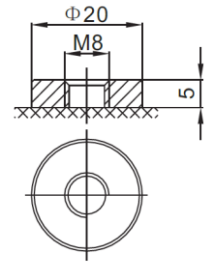
Stromversorgungen  
Power Supplies

Unit: mm

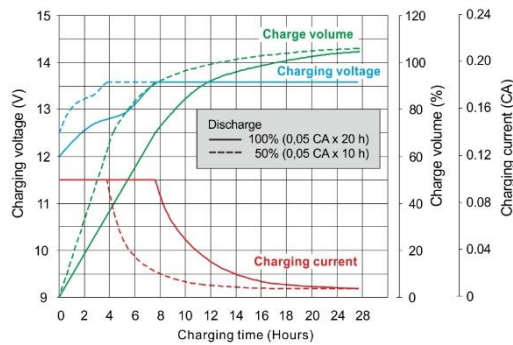
Dimensions: 522 (L) × 240 (W) × 219 (H)



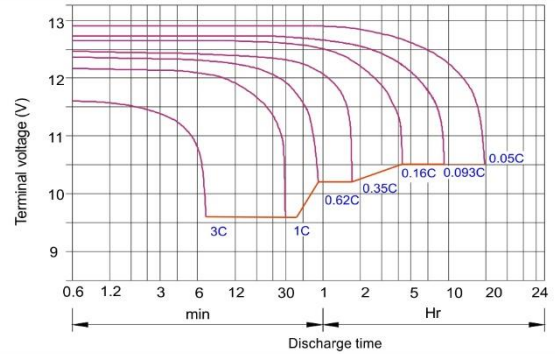
Terminal F10



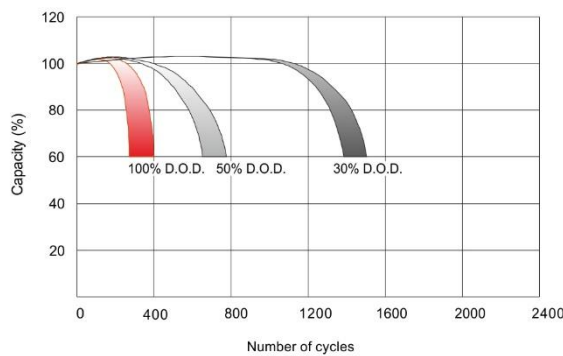
Float charging characteristics



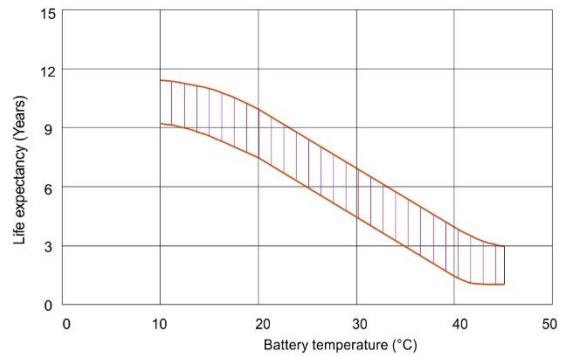
Discharge characteristics



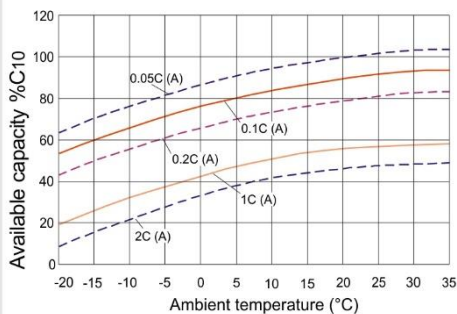
Charging cycle number in relation to discharge depth



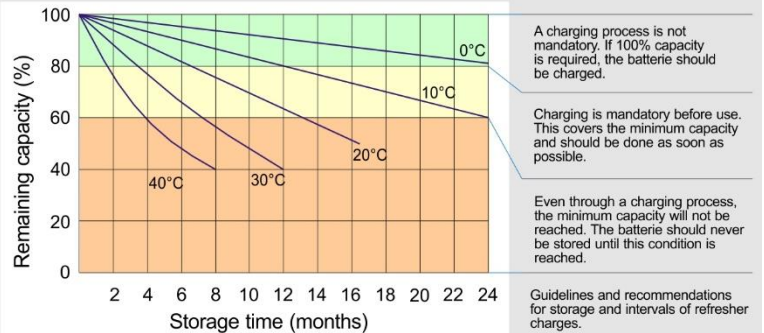
Temperature effect on the life expectancy



Effect of temperature on the capacity

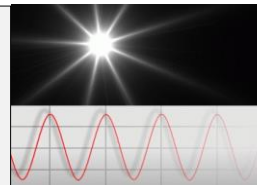


Storage / self-discharge characteristics



EFFEKTA Regeltechnik GmbH  
Rheinwaldstr. 34  
D-78628 Rottweil  
Germany

Tel.: +49 (0)741/17451-0  
Fax: +49 (0)741/17451-22  
Email: info@effekta.com  
URL: www.effekta.com



EFFEKTA®

STROMVERSORGUNGEN  
POWER SUPPLIES