

VERSATILITY FOR EVERY SITE.

PNEUMATIC TYRED ROLLER, MODEL BW 11 RH-5.



MILLIONS OF KILOMETRES CARRY OUR HALLMARK.

You build the best roads to travel speedily and safely. And to improve these journeys, we build the best machines. As part of the internationally leading FAYAT Group, BOMAG supplies the equipment for all road construction applications – from soil compactors, cold planers and recyclers; from asphalt rollers to pavers. For over 60 years, our company has helped write road construction history.

With our cumulative expertise we drive innovation and set the pace of an entire industry. BOMAG has developed a huge number of technologies, from systems for measuring and controlling compaction, such as the ECONOMIZER and ASPHALT MANAGER, through to technologies for reducing operating costs, like ECOMODE and the most effective screed heating on the paver market: MAGMALIFE. We offer solutions for a wide variety of applications.

We have BOMAG specialists working around the world and partners in more than 120 countries supporting you, from fitting out machines to solving the most demanding challenges on site.

We owe our power of innovation to more than 2,000 employees worldwide, their commitment and unique experience. Expertise which has made us the world market leader in compaction. The reason behind this success is our unconditional commitment to quality: during product development and production, in training our employees, and in providing a level of service which guarantees only the best on site support.







WE ENHANCE YOUR PRODUCTIVITY.

ASPHALT COMPACTION REQUIRES THE BEST DESIGN ENGINEERS AT BOMAG.

Compaction equipment has been developed, designed and built by us for almost 60 years. Our engineers are dedicated to making every new machine generation even better, more economical and productive than the previous one. And they always have one target: Every BOMAG machine must complete a customer's work more efficiently, conveniently and professionally.

Close contact to customers helps us find solutions which really increase productivity, and which enable them to complete every job precisely to specification.

BOMAG was the first manufacturer to launch a pneumatic tyred roller onto the market that combines conventional compaction with a state-of-the-art hydrostatic drive - and that was 20 years ago. But the latest model is also ideal for use in both earthworks and asphalt construction.

The roller can adapt to any compaction job and excels in terms of power and efficiency. Safety and ease of operation are priorities at BOMAG.



With an operating weight of 5t and more, the BOMAG BW 11 RH-5 pneumatic tyred roller is first choice for many applications. With cab or ROPS, productivity and operating comfort are always assured.

The expertise of our engineers and service support from our sales network are there to help you... worldwide. You can depend on legendary BOMAG quality. Because we only have one goal: to enhance your productivity.



FIVE GOOD REASONS FOR CHOOSING BOMAG.

1

MAINTENANCE: EASY!

The hood opens fully without effort. No lubrication points. Fillers can simply be released under the access step. The vertical radiator requires no additional cleaning.

5

SURFACE COVERAGE: THE BEST!

ECOMODE ensures load dependent and economical work without high engine speeds. With excellent fuel economy. Efficiency in agricultural road construction.



4

FLEXIBILITY: TOTAL!

Central articulated steering, hydrostatic drive with three speeds, functional frame design: perfect features for highly flexible use and manoeuvrability.





2

OPERATION: SUPER EFFICIENCY!

Profitable work and great ergonomics: Cab with extra large glass windows, clearly arranged console, intuitive operation – the operator can relax and concentrate on the task at hand.

3

COST-EFFECTIVENESS: HIGH!

High speeds up to 20 km/h mean large surface coverage.
Ideal for surface chipping.

PERFORMANCE THAT COMES FROM WITHIN.

In day-to-day work, the cab is not only the driver's workplace for hours, but also his "snug". BOMAG has always placed great focus on the quality of the cab, which is a big feature when it comes to ergonomics and ease of use.

THE BEST OUTLOOK.

Climb aboard and feel the comfort. The BW 11 RH-5 has the ultimate cab. The extra large windows offer the driver a perfect view of the working area, and more safety on site.

EVERY MOVE IS RIGHT.

Roller operation is intuitive and fast. The self-explanatory functions make the roller easy to handle. The driver has all indicators and operating controls in reach and in sight. That means faster operations and even better ease of operation.



The room in the highly spacious cab is in a class of its own. For ideal work conditions.



If no heating or air conditioning is required, the BW 11 RH-5 can also be delivered with ROPS/FOPS.

STEERED INTO THE RIGHT LANE.

The BW 11 RH-5 can be steered with precision. Thanks to the "soft reverse" function, reversing is easy.

JUST TAKE A SEAT.

The seat together with the armrests and travel lever make up one functional unit. The seat can be turned 20 degrees to either side.



The driver readily takes over steering in the BW 11 RH-5. The operator has everything in view - and under control. All operating controls are arranged clearly.



YOU DON'T HAVE TO WAIT LONG HERE.

A powerful working machine has to be able to do one thing above all: roll, roll and roll again. Downtime therefore has to be kept to an absolute minimum. With such easy maintenance, the BW 11 RH-5 meets this requirement perfectly.



The hinged engine hood can be opened wide allowing fast, unobstructed access to the engine.

FASTER SERVICE AT LESS COST.

The engine hood opens effortlessly and fully. To make maintenance as easy as possible the engine and all service points are readily accessed from the ground. After all, you have more important things to do.

SMART DESIGN DETAILS.

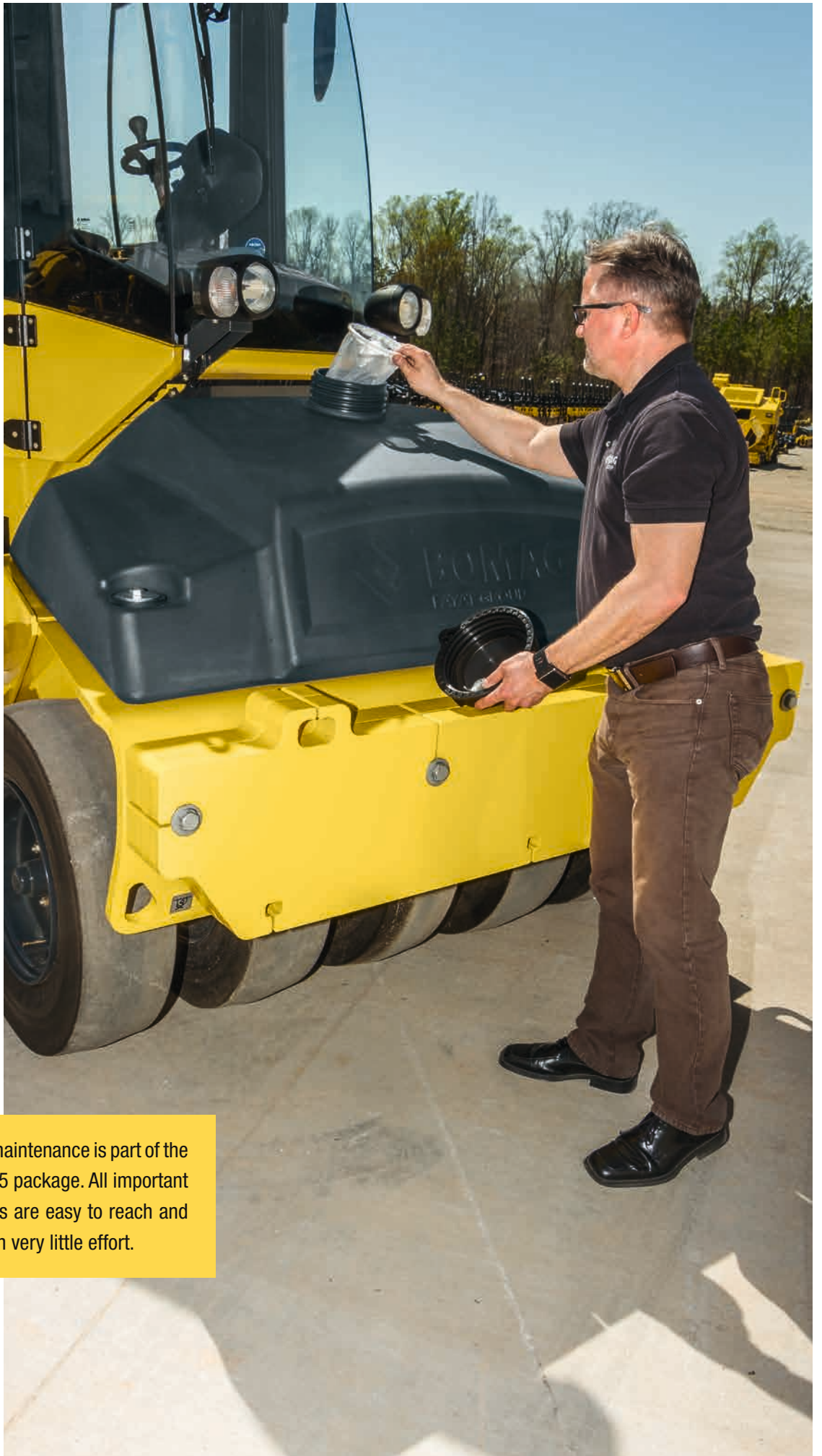
The maintenance-free articulated joint is not welded to the frame. Also, the smart frame design guarantees long service life.

COOL RADIATOR.

The radiator is in an excellent vertical position right behind the cab. This means it stays clean and doesn't need extra cleaning. Maintenance-free SAHR brakes also increase the ease of service on this model.



All engine service points are easy to access. So maintenance work can be performed quickly and easily.



Easy, fast maintenance is part of the BW 11 RH-5 package. All important components are easy to reach and service with very little effort.



The increased wheel load from the ballast enables the BW 11 RH-5 to achieve high depth effect in earthworks and asphalt construction and excellent sealing of surfaces.

CLEVER FRAME DESIGN.

This new pneumatic tyred roller is out of the ordinary in many respects. In order to increase stability the ballast compartments have been lowered significantly together with the machine's centre of gravity. This means more safety and more efficiency.

FUNCTIONAL DESIGN.

The functional frame design of the BW 11 RH-5 provides the basis for this pneumatic tyred roller's superior driving characteristics. A machine's centre of gravity is well known to affect its stability. The lower it is, the more stable the unit. BOMAG engineers have strategically placed the ballast compartments to ensure a lower centre of gravity, giving a high level of stability and even distribution of weight. The clever frame design on the BW 11 RH-5 delivers the best framework conditions for perfect work results.

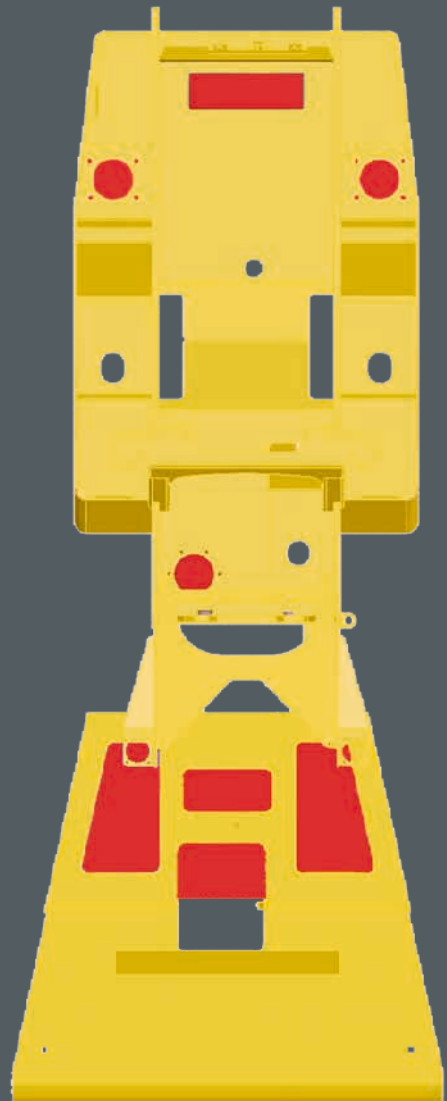
BALANCED WEIGHT RATIOS.

Precisely balanced weight distribution directly affects a range of roller characteristics. Handling, acceleration, traction and service life of components also affects them too. This results in perfect driving characteristics. And superior surface quality and compaction.



To increase stability the ballast compartments have been positioned extremely low down, as shown here above the front axle.

DISTRIBUTION OF THE BALLAST COMPARTMENTS



WHERE GREAT PRODUCTIVITY COUNTS.

The BW 11 RH-5 combines conventional compaction with a state-of-the-art hydrostatic drive. The perfectly tuned, three-stage drive allows different driving methods for gradients and flat sections. This provides a whole new level of productivity.

TUNED DRIVE.

The state-of-the-art hydrostatic drive of the BW 11 RH-5 is in a class of its own. Whether driving fast or slow, on steep inclines or for high surface coverage: three speeds allow the right choice for any application.



All important operating controls can be reached with ease and are easy to select. Every move is guaranteed to be right.

ALL GOOD THINGS COME IN THREES.

The three speeds mean the driver can choose the right performance for each application. First gear guarantees the drive maximum gradeability - perfect for compacting gradients. Second gear can be universally used for most varied applications. However, where high productivity is required, the third gear provides top speed. A typical example is chipping work.

HIGHLY RESPONSIVE MACHINE USE.

The BW 11 RH-5's hydrostatic steering system is equipped with a steering wheel as used in cars. The hydrostatic drive allows for highly responsive driving control, even on sharp bends, as well as easy manoeuvring thanks to the smooth reversing provided by the "soft reverse" feature.



The three travel ranges on the hydrostatic drive allow high gradeability and maximum speed.



**ULTIMATE ACCURACY:
CENTRAL ARTICULATED STEERING.**

The centrally positioned articulated steering allows the wheels to keep the entire roller width on the ground when turning. With a wide steering angle of 35 degrees, the centrally positioned articulated steering will get this roller round the tightest of bends. This means perfect compaction results in fewer passes. Complete ground contact: the articulated joint can also move an additional 10 degrees. This is how even compaction is achieved on uneven surfaces.

SAVING WITH EVERY PASS.

Fuel costs are one of the major items in the calculation of operating costs for a machine, because over the lifetime of a roller they largely exceed the purchase price. BOMAG engineers have taken care of this and with ECOMODE provide an energy efficiency package, which saves several thousand litres of fuel per year. This reduces operating costs and protects the environment.

SMART CONTROL.

ECOMODE always controls the engine in relation to the load at the speed required for the power needed. The hydraulic components can be smoothly adjusted. This keeps the overall system always within the optimal power range and consumption is reduced, without having to compromise on power and productivity.

ENVIRONMENTAL PROTECTION COMES AS STANDARD.

Depending on the power stage, particulate filters are used to reduce pollutants. maintenance is minimal, because the filter regenerates automatically during operation.

RELIABLE POWER.

In the water-cooled, 4-cylinder KUBOTA engine on the BW 11 RH-5, the combination of direct fuel injection, turbo-charger and 4-valve technology guarantees proven power – and less fuel consumption. Needless to say, this engine meets the strict emission regulations in accordance with Stage 3a/Tier 3 and Stufe 4/Tier 4 final. The state-of-the-art engine not only produces lower emissions, but also excels with low wear and smooth operation. And what's more, this engine is quiet. This is not only beneficial to the work crew on site, but also has a positive effect on acceptance in urban projects.

BENEFITS FOR YOU:

- Load dependent engine speed control saves up to 30% fuel.
- Less noise eases the load on driver and environment.
- Idle speed shutdown reduces wear and operating hours and increases resale value.



COST-EFFECTIVE CHIP SEALING.

Chip sealing is a cost-effective technique for renewing a road surface. The high surface area coverage and excellent rolling quality make this new pneumatic tyred roller your operating machine of choice for this type of work.

THE FIRST CHOICE.

Thanks to the high speeds possible, the BW 11 RH-5 is also the first choice when it comes to chipping. Chip sealing is currently the most cost-effective method of renewing a road surface. In terms of service life and effectiveness it is comparable to other methods, but costs significantly less – up to 25% of the cost of road surface course renewal.

ROAD REJUVENATION.

Chip sealing is applied on the top of an existing pavement to protect from tyre damage, the sun and to prevent water ingress. This extends the service life of roads. At the same time, the macro texture increases surface skid resistance. The roller can be used to compact base material, sand and asphalt.

THIS IS HOW IT'S DONE.

For chip sealing, an asphalt binder is sprayed onto the road and covered with a single -size aggregate chip layer. The roller takes care of the sealing. The new surface is then rolled to bed the aggregate chippings. Excess chips are removed after a curing period of 24 hours.



The BW 11 RH-5 gives perfect compaction and a smooth and even surface finish.



Top speed is 20 km/h. This offers great surface coverage.

ACCESSORIES WITH ADDED VALUE.

The BW 11 RH-5 pneumatic tyred roller can be enhanced with a first class range of optional accessories to suit all needs.

YOU HAVE THE CHOICE:



■ Water sprinkling system

The pressure water spray system ensures efficient use of water. The scraper system is hinged and can be folded back.



■ Thermal aprons

Heat shields maintain even high tyre temperatures. Asphalt pick-up, which can damage the mat, is effectively prevented.



■ Ballast

The following ballast types are available:
– 7 t and 9 t for chip and asphalt applications.
– 11 t (only with ROPS) for sand and base material compaction.

With this new pneumatic tyred roller from BOMAG everything has been thought of, including the accessories. Geared to practical work situations, extra benefits are guaranteed.







MODEL OVERVIEW.

BW 11 RH-5, the new pneumatic tyred roller generation in the 5.2t to 11 t performance class, offers highly cost-effective performance on earthworks and asphalt, for compacting stabilised soil layers, and for rolling chippings on surface dressing work.





Model	Version	Operating weight [kg]	Wheel load [kg]	Working width [mm]	Power [kW]
BW 11 RH-5	ROPS	5,300	589	1,727	55.4
BW 11 RH-5	Cabin	5,500	611	1,727	55.4
BW 11 RH-5	7 t ballast option	7,000	778	1,727	55.4
BW 11 RH-5	9 t ballast option	9,000	1,000	1,727	55.4
BW 11 RH-5	11 t ballast option	11,000	1,222	1,727	55.4





BOMAG
FAYAT GROUP

PERFECTION IS NO ACCIDENT.

All our know-how is invested in every roller. Down to the fine details. And you can add your own experience and know-how. The result: a winning partnership. Every time.

BOMAG
FAYAT GROUP

BW12RH II

Head Office/Hauptsitz:

BOMAG

Hellerwald
56154 Boppard
GERMANY
Tel. +49 6742 100-0
Fax +49 6742 3090
info@bomag.com

**BOMAG Maschinen-
handels-gesellschaft m.b.H.**

Porschestraße 9
1230 Wien
AUSTRIA
Tel. +43 1 69040-0
Fax +43 1 69040-20
austria@bomag.com

BOMAG MARINI EQUIPAMENTOS LTDA.

Rua Comendador Clemente Cifali, 530
Distrito Industrial Ritter
Cachoeirinha – RS
BRAZIL
ZIP code 94935-225
Tel. +55 51 2125-6677
Fax +55 51 3470-6220
brasil@bomag.com

BOMAG (CANADA), INC.

3455 Semenyk Court
Mississauga, Ontario L5C 4P9
CANADA
Tel. +1 905 361 9961
Fax +1 905 361 9962
canada@bomag.com

BOMAG (CHINA)

Compaction Machinery Co. Ltd.
No. 2808 West Huancheng Road
Shanghai Comprehensive
Industrial Zone (Fengxian)
Shanghai 201401
CHINA
Tel. +86 21 33655566
Fax +86 21 33655508
china@bomag.com

BOMA Equipment

Hong Kong LTD

Room 1003, 10/F Cham Centre
700, Castle Peak Road
Kowloon
HONG KONG
Tel. +852 2721 6363
Fax +852 2721 3212
bomahk@bomag.com

BOMAG France S.A.S.

2, avenue du Général de Gaulle
91170 Viry-Châtillon
FRANCE
Tel. +33 1 69578600
Fax +33 1 69962660
france@bomag.com

BOMAG (GREAT BRITAIN), LTD.

Sheldon Way
Larkfield, Aylesford
Kent ME20 6SE
GREAT BRITAIN
Tel. +44 1622 716611
Fax +44 1622 710233
gb@bomag.com

BOMAG Italia Srl.

Via Roma 50
48011 Alfonsine
ITALY
Tel. +39 0544 864235
Fax +39 0544-864367
italy@bomag.com

FAYAT BOMAG Polska Sp. z o.o.

Ul. Szyszkowa 52
02-285 Warszawa
POLAND
Tel. +48 22 482 04 00
Fax +48 22 482 04 01
poland@bomag.com

FAYAT BOMAG RUS OOO

141400, RF, Moscow region
Khimki, Klayazma block, h. 1-g
RUSSIA
Tel. +7 (495) 287 92 90
Fax +7 (495) 287 92 91
russia@bomag.com

BOMAG GmbH

300 Beach Road
The Concourse, #18-06
Singapore 199555
SINGAPORE
Tel. +65 6 294 1277
Fax +65 6 294 1377
singapore@bomag.com

BOMAG Americas, Inc.

125 Blue Granite Parkway
Ridgeway SC 29130
U.S.A.
Tel. +1 803 3370700
Fax +1 803 3370800
usa@bomag.com

