



LEGENDA SIMBOLI E TABELLE

LÉGENDE SYMBOLES ET TABLEAUX
SYMBOLS AND TABLES LEGEND

Ø1 Tubo - Diametro Esterno
Tuyau - diamètre externe
Pipe - outside diameter



Spessore
Epaisseurs
Thickness

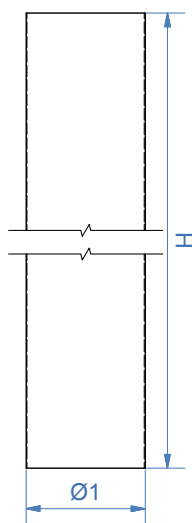
Ø2 Tubo con Bordo - Diametro Esterno
Tuyau avec bord - diamètre externe
Pipe with edge - outside diameter





Peso
Poids
Weight

TUBO SENZA BORDO

TUYAU SANS BORDS
PIPE WITHOUT EDGES



Cod.	Ø 1 mm	H mm		 Kg				
------	-----------	---------	-------------------------------------------------------------------------------------	-------------------------------------------------------------------------------------------	--	--	--	--

A richiesta - *sur demand* - on demand

151.201.100	105	2000 ± 2mm	8/10	4,16				
151.201.200	120	2000 ± 2mm	8/10	4,64				
151.201.300	150	2000 ± 2mm	8/10	5,86				
151.201.700	200	2000 ± 2mm	8/10	7,86				

Disponibile a magazzino - *en stock* - on stock:

151.201.101	105	2000 ± 2mm	10/10	5,20				
151.201.201	120	2000 ± 2mm	10/10	5,80				
151.201.301	150	2000 ± 2mm	10/10	7,33				
151.201.701	200	2000 ± 2mm	10/10	9,83				

Disponibile a magazzino - *en stock* - on stock:

151.201.124	105	2000 ± 2mm	12/10	6,20				
151.201.224	120	2000 ± 2mm	12/10	7,00				
151.201.324	150	2000 ± 2mm	12/10	8,80				
151.201.724	200	2000 ± 2mm	12/10	11,80				

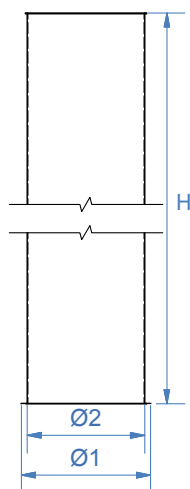
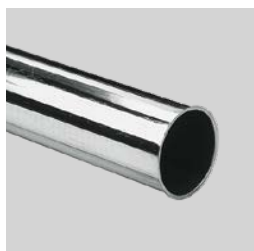
A richiesta - *sur demand* - on demand

151.201.147	105	2000 ± 2mm	15/10	7,60				
151.201.247	120	2000 ± 2mm	15/10	9,00				
151.201.347	150	2000 ± 2mm	15/10	11,00				
151.201.747	200	2000 ± 2mm	15/10	14,60				

Tolleranza di H=± 2mm - Con o senza protezione in PVC
Tolérance de H=± 2mm - Avec ou sans protection en PVC
Tolerance of H=± 2mm - With or without PVC coating

Spessore 20/10 a richiesta
Epaisseurs 20/10 sur demand
20/10 thickness on demand

TUBO CON BORDO
TUYAU A VES BORDS
PIPE WITH EDGES



Cod.	Ø 1 mm	Ø 2 mm	H mm		Kg			
------	-----------	-----------	---------	--	----	--	--	--

A richiesta - *sur demand* - on demand

151.203.100	105	113	1992 ± 2mm	8/10	4,16			
151.203.200	120	128	1992 ± 2mm	8/10	4,80			
151.203.300	150	158	1992 ± 2mm	8/10	5,86			
151.203.700	200	208	1992 ± 2mm	8/10	7,86			

Disponibile a magazzino - *en stock* - on stock:

151.203.101	105	113	1992 ± 2mm	10/10	5,20			
151.203.201	120	128	1992 ± 2mm	10/10	6,00			
151.203.301	150	158	1992 ± 2mm	10/10	7,33			
151.203.701	200	208	1992 ± 2mm	10/10	9,83			

Disponibile a magazzino - *en stock* - on stock:

151.203.124	105	113	1992 ± 2mm	12/10	6,20			
151.203.224	120	128	1992 ± 2mm	12/10	7,00			
151.203.324	150	158	1992 ± 2mm	12/10	8,80			
151.203.724	200	208	1992 ± 2mm	12/10	11,80			

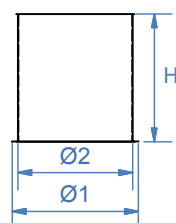
A richiesta - *sur demand* - on demand

151.203.147	105	113	1992 ± 2mm	15/10	7,60			
151.203.247	120	128	1992 ± 2mm	15/10	9,00			
151.203.347	150	158	1992 ± 2mm	15/10	11,00			
151.203.747	200	208	1992 ± 2mm	15/10	14,60			

Tolleranza di H=± 2mm - Con o senza protezione in PVC
Tolérance de H=± 2mm - Avec ou sans protection en PVC
Tolerance of H=± 2mm - With or without PVC coating

Spessore 20/10 a richiesta
Epaisseurs 20/10 sur demand
20/10 thickness on demand

ANELLO DRITTO CON BORDO
BAGUES DROITS AVEC BORD
STRAIGHT RINGS WITH EDGE



Cod.	Ø 1 mm	Ø 2 mm	H mm		Kg			
------	-----------	-----------	---------	--	----	--	--	--

A richiesta - *sur demand* - on demand

151.109.101	105	113	100	10/10	0,079			
151.109.103	120	128	100	10/10	0,087			
151.109.105	150	158	100	10/10	0,166			
151.109.113	200	208	100	10/10	0,25			

Disponibile a magazzino - *en stock* - on stock:

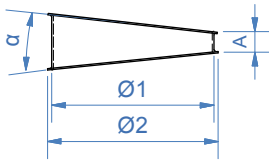
151.109.121	105	113	100	12/10	0,095			
151.109.123	120	128	100	12/10	0,105			
151.109.125	150	158	100	12/10	0,200			
151.109.133	200	208	100	12/10	0,300			

A richiesta - *sur demand* - on demand

151.109.141	105	113	100	15/10	0,16			
151.109.143	120	128	100	15/10	0,18			
151.109.145	150	158	100	15/10	0,25			
151.109.153	200	208	100	15/10	0,38			



SETTORE DI CURVA A 12°
SECTEUR DE COUDE 12°
 BEND SEGMENT 12°



Cod.	Ø 1 mm	Ø 2 mm	A mm	α°		 Kg		
------	-----------	-----------	---------	----	--	--------	--	--

A richiesta - *sur demand* - on demand

151.102.001	105	113	20	12°	10/10	0,075		
151.102.003	120	128	20	12°	10/10	0,083		
151.102.005	150	158	20	12°	10/10	0,162		
151.102.013	200	208	20	12°	10/10	0,238		

Disponibile a magazzino - *en stock* - on stock:

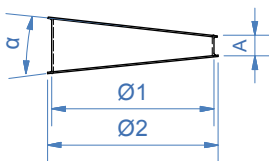
151.102.021	105	113	20	12°	12/10	0,090		
151.102.023	120	128	20	12°	12/10	0,100		
151.102.025	150	158	20	12°	12/10	0,195		
151.102.033	200	208	20	12°	12/10	0,295		

A richiesta - *sur demand* - on demand

151.102.041	105	113	20	12°	15/10	0,113		
151.102.043	120	128	20	12°	15/10	0,128		
151.102.045	150	158	20	12°	15/10	0,238		
151.102.053	200	208	20	12°	15/10	0,360		

Spessore 20/10 a richiesta
Epaisseurs 20/10 sur demand
 20/10 thickness on demand

SETTORE DI CURVA A 15°
SECTEUR DE COUDE 15°
 BEND SEGMENT 15°



Cod.	Ø 1 mm	Ø 2 mm	A mm	α°		 Kg		
------	-----------	-----------	---------	----	--	--------	--	--

A richiesta - *sur demand* - on demand

151.102.201	105	113	20	15°	10/10	0,076		
151.102.203	120	128	20	15°	10/10	0,084		
151.102.205	150	158	20	15°	10/10	0,163		
151.102.213	200	208	20	15°	10/10	0,239		

Disponibile a magazzino - *en stock* - on stock:

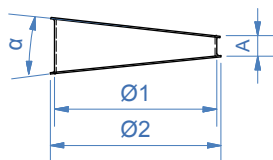
151.102.221	105	113	20	15°	12/10	0,092		
151.102.223	120	128	20	15°	12/10	0,102		
151.102.225	150	158	20	15°	12/10	0,197		
151.102.233	200	208	20	15°	12/10	0,297		

A richiesta - *sur demand* - on demand

151.102.241	105	113	20	15°	15/10	0,114		
151.102.243	120	128	20	15°	15/10	0,129		
151.102.245	150	158	20	15°	15/10	0,239		
151.102.353	200	208	20	15°	15/10	0,369		

Spessore 20/10 a richiesta
Epaisseurs 20/10 sur demand
 20/10 thickness on demand

SETTORE DI CURVA A 18°
SECTEUR DE COUDE 18°
BEND SEGMENT 18°



Cod.	Ø 1 mm	Ø 2 mm	A mm	α°				
------	-----------	-----------	---------	----	--	--	--	--

A richiesta - *sur demand* - on demand

151.102.121	105	113	20	18°	10/10	0,077		
151.102.103	120	128	20	18°	10/10	0,085		
151.102.105	150	158	20	18°	10/10	0,164		
151.102.113	200	208	20	18°	10/10	0,240		

Disponibile a magazzino - *en stock* - on stock:

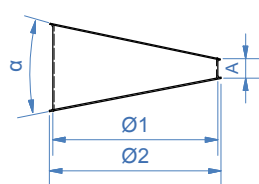
151.102.121	105	113	20	18°	12/10	0,093		
151.102.123	120	128	20	18°	12/10	0,103		
151.102.125	150	158	20	18°	12/10	0,198		
151.102.133	200	208	20	18°	12/10	0,298		

A richiesta - *sur demand* - on demand

151.102.141	105	113	20	18°	15/10	0,115		
151.102.143	120	128	20	18°	15/10	0,130		
151.102.145	150	158	20	18°	15/10	0,240		
151.102.153	200	208	20	18°	15/10	0,370		

Spessore 20/10 a richiesta
Epaisseurs 20/10 sur demand
20/10 thickness on demand

SETTORE DI CURVA A 22°
SECTEUR DE COUDE 22°
BEND SEGMENT 22°



Cod.	Ø 1 mm	Ø 2 mm	A mm	α°				
------	-----------	-----------	---------	----	--	--	--	--

A richiesta - *sur demand* - on demand

151.102.301	105	113	20	22°	10/10	0,079		
151.102.303	120	128	20	22°	10/10	0,087		
151.102.305	150	158	20	22°	10/10	0,166		
151.102.313	200	208	20	22°	10/10	0,250		

Disponibile a magazzino - *en stock* - on stock:

151.102.321	105	113	20	22°	12/10	0,095		
151.102.323	120	128	20	22°	12/10	0,105		
151.102.325	150	158	20	22°	12/10	0,200		
151.102.333	200	208	20	22°	12/10	0,300		

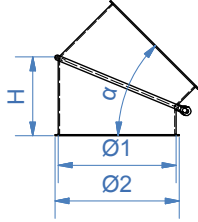
A richiesta - *sur demand* - on demand

151.102.341	105	113	20	22°	15/10	0,16		
151.102.343	120	128	20	22°	15/10	0,18		
151.102.345	150	158	20	22°	15/10	0,25		
151.102.353	200	208	20	22°	15/10	0,38		

Spessore 20/10 a richiesta
Epaisseurs 20/10 sur demand
20/10 thickness on demand



SETTORE DI CURVA GIREVOLE 0° ÷ 45°
 SECTEUR TOURNANTS 0° ÷ 45°
 REVOLVING SEGMENT 0° ÷ 45°



Cod.	Ø 1 mm	Ø 2 mm	H mm	α° max			Kg		
------	-----------	-----------	---------	-----------	--	--	----	--	--

A richiesta - *sur demand* - on demand

151.103.801	105	113	140	45°	10/10		0,341		
151.103.803	120	128	150	45°	10/10		0,370		
151.103.805	150	158	170	45°	10/10		0,487		
151.103.813	200	208	200	45°	10/10		0,833		

Disponibile a magazzino - *en stock* - on stock:

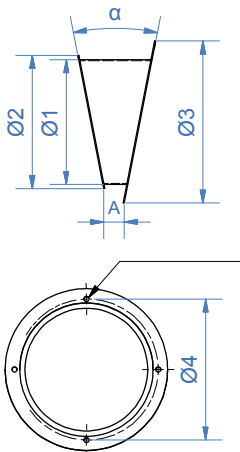
151.103.821	105	113	140	45°	12/10		0,410		
151.103.823	120	128	150	45°	12/10		0,445		
151.103.825	150	158	170	45°	12/10		0,585		
151.103.833	200	208	200	45°	12/10		1,00		

A richiesta - *sur demand* - on demand

151.103.841	105	113	140	45°	15/10		0,53		
151.103.843	120	128	150	45°	15/10		0,63		
151.103.845	150	158	170	45°	15/10		0,85		
151.103.853	200	208	200	45°	15/10		1,29		

Spessore 20/10 a richiesta
Epaisseurs 20/10 sur demand
 20/10 thickness on demand

SEGMENTO DI GOMITO A FLANGIA
 SECTEUR DE COUDE À BRIDES
 FLANGED ELBOW SEGMENT



Cod.	Ø 1 mm	Ø 2 mm	Ø 3 mm	Ø 4 mm	A mm	α° mm			N°F	
------	-----------	-----------	-----------	-----------	---------	----------	--	--	-----	--

A richiesta - *sur demand* - on demand

151.105.101	105	113	165	123	20	22°	10/10	0,194	4	
151.105.103	120	128	180	150	20	22°	10/10	0,295	4	
151.105.105	150	158	210	170	20	22°	10/10	0,383	4	
151.105.113	200	208	260	219	20	22°	10/10	0,510	4	

Disponibile a magazzino - *en stock* - on stock:

151.105.121	105	113	165	123	20	22°	12/10	0,233	4	
151.105.123	120	128	180	150	20	22°	12/10	0,355	4	
151.105.125	150	158	210	170	20	22°	12/10	0,460	4	
151.105.133	200	208	260	219	20	22°	12/10	0,613	4	

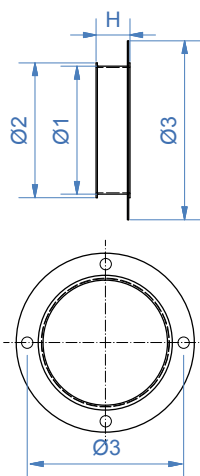
A richiesta - *sur demand* - on demand

151.105.141	105	113	165	123	20	22°	15/10	0,28	4	
151.105.143	120	128	180	150	20	22°	15/10	0,28	4	
151.105.145	150	158	210	170	20	22°	15/10	0,29	4	
151.105.153	200	208	260	219	20	22°	15/10	0,30	4	

N° 4 fori Ø 5 a 90°
 N° 4 trous Ø 5 de 90°
 N° 4 holes Ø 5 of 90°

Spessore 20/10 a richiesta
Epaisseurs 20/10 sur demand
 20/10 thickness on demand

SETTORE DIRITTO A FLANGIA
SECTEUR DROIT À BRIDE
FLANGED STRAIGHT RINGS



Cod.	Ø 1 mm	Ø 2 mm	Ø 3 mm	Ø 4 mm	H mm			N° F
------	-----------	-----------	-----------	-----------	---------	--	--	------

A richiesta - *sur demand* - on demand

151.104.101	105	113	138	123	40	10/10	0,204	4
151.104.103	120	128	152	138	40	10/10	0,241	4
151.104.105	150	158	188	170	40	10/10	0,300	4
151.104.113	200	208	243	219	50	10/10	0,529	4

Disponibile a magazzino - *en stock* - on stock:

151.104.121	105	113	138	123	40	12/10	0,245	4
151.104.123	120	128	152	138	40	12/10	0,290	4
151.104.125	150	158	188	170	40	12/10	0,360	4
151.104.133	200	208	243	219	50	12/10	0,635	4

A richiesta - *sur demand* - on demand

151.104.141	105	113	138	123	40	15/10	0,32	4
151.104.143	120	128	152	138	40	15/10	0,37	4
151.104.145	150	158	188	170	40	15/10	0,46	4
151.104.153	200	208	243	219	50	15/10	0,67	4

N° 4 fori Ø 5 a 90°

N° 4 trous Ø 5 de 90°

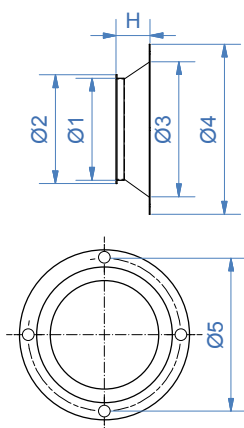
N° 4 holes Ø 5 of 90°

Spessore 20/10 a richiesta

Epaisseurs 20/10 sur demand

20/10 thickness on demand

ANELLO CONICO A FLANGIA
CÔNE À BRIDES
TAPER FLANGED RINGS



Cod.	Ø 1 mm	Ø 2 mm	Ø 3 mm	Ø 4 mm	Ø 5 mm	H mm			N° F
------	-----------	-----------	-----------	-----------	-----------	---------	--	--	------

A richiesta - *sur demand* - on demand

151.106.101	105	113	150	165	160	35	10/10	0,233	5
151.106.103	120	128	160	180	180	40	10/10	0,24	5
151.106.105	150	158	190	210	212	40	10/10	0,253	6
151.106.113	200	208	240	260	260	50	10/10	0,272	6

Disponibile a magazzino - *en stock* - on stock:

151.106.121	105	113	150	165	160	35	12/10	0,28	5
151.106.123	120	128	160	180	180	40	12/10	0,288	5
151.106.125	150	158	190	210	212	40	12/10	0,304	6
151.106.125	200	208	240	260	260	50	12/10	0,327	6

A richiesta - *sur demand* - on demand

151.106.141	105	113	150	165	160	35	15/10	0,35	5
151.106.143	120	128	160	180	180	40	15/10	0,36	5
151.106.145	150	158	190	210	212	40	15/10	0,38	6
151.106.153	200	208	240	260	260	50	15/10	0,41	6

N° 4 fori Ø 5 a 90° con flangia girevole

N° 4 trous Ø 5 de 90° avec bride tournante

N° 4 holes Ø 5 of 90° with revolving flange

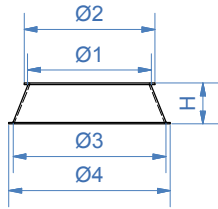
Spessore 20/10 a richiesta

Epaisseurs 20/10 sur demand

20/10 thickness on demand



RIDUZIONI BASSE SIMMETRICHE
RÉDUCTION BASSE SYMÉTRIQUE
 SYMMETRICAL LOW REDUCTION



Cod.	Ø 1 mm	Ø 2 mm	Ø 3 mm	Ø 4 mm	H mm			Kg
------	-----------	-----------	-----------	-----------	---------	--	--	----

Disponibile a magazzino - *en stock - on stock*:

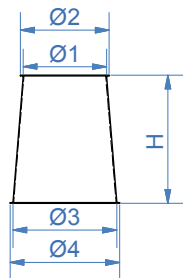
151.108.521	105	113	120	128	35	12/10		0,115
151.108.522	105	113	150	158	50	12/10		0,230
151.108.523	120	128	150	158	50	12/10		0,256
151.108.525	150	158	200	208	100	12/10		0,575

A richiesta - *sur demand - on demand*

151.108.541	105	113	120	128	35	15/10		0,14
151.108.542	105	113	150	158	50	15/10		0,30
151.108.543	120	128	150	158	50	15/10		0,21
151.108.545	150	158	200	208	100	15/10		0,718

Spessori 10/10 e 20/10 a richiesta
Epaisseurs 10/10 et 20/10 sur demand
 10/10 and 20/10 thickness on demand

RIDUZIONE ALTA SIMMETRICA
RÉDUCTION HAUTE SYMÉTRIQUE
 SYMMETRICAL HIGH REDUCTION



Cod.	Ø 1 mm	Ø 2 mm	Ø 3 mm	Ø 4 mm	H mm			Kg
------	-----------	-----------	-----------	-----------	---------	--	--	----

Disponibile a magazzino - *en stock - on stock*:

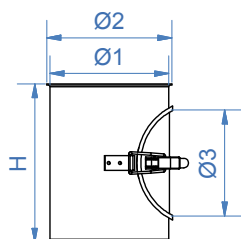
151.108.121	105	113	120	128	120	12/10		0,415
151.108.122	105	113	150	158	120	12/10		0,230
151.108.123	120	128	150	158	185	12/10		0,820
151.108.125	150	158	200	208	185	12/10		0,575

A richiesta - *sur demand - on demand*

151.108.141	105	113	120	128	120	15/10		0,518
151.108.142	105	113	150	158	120	15/10		0,287
151.108.143	120	128	150	158	185	15/10		1,205
151.108.145	150	158	200	208	185	15/10		0,718

Spessori 10/10 e 20/10 a richiesta
Epaisseurs 10/10 et 20/10 sur demand
 10/10 and 20/10 thickness on demand

TUBO DI ISPEZIONE CON SPORTELLO
TUYAU D'INSPECTION AVEC PORTE
INSPECTION PIPE WITH DOOR



Cod.	Ø 1 mm	Ø 2 mm	Ø 3 mm	H mm				
------	-----------	-----------	-----------	---------	--	--	--	--

Disponibile a magazzino - en stock - on stock:

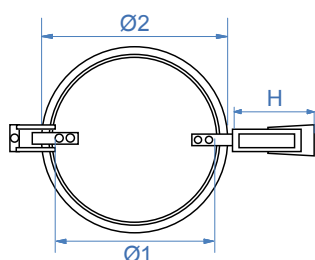
151.114.121	105	113	140	200	12/10	0,760		
151.114.123	120	128	140	200	12/10	0,820		
151.114.125	150	158	140	200	12/10	1,040		
151.114.133	200	208	140	200	12/10	1,345		

A richiesta - sur demand - on demand

151.114.141	105	113	140	200	15/10	0,80		
151.114.143	120	128	140	200	15/10	1,00		
151.114.145	150	158	140	200	15/10	1,20		
151.114.153	200	208	140	200	15/10	1,60		

Spessore 20/10 a richiesta
Epaisseurs 20/10 sur demand
20/10 thickness on demand

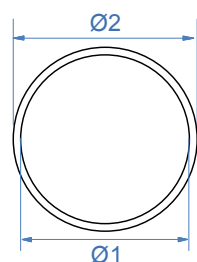
SPORTELLO CON GANCIO
PORTE AVEC CROCHET
DOOR WITH HOOK



Cod.	Ø 1 mm	Ø 2 mm	H mm				
------	-----------	-----------	---------	--	--	--	--

151.114.998	120	135	80				
-------------	-----	-----	----	--	--	--	--

GUARNIZIONE PER SPORTELLO IN GOMMA PARA NERA
GARNITURE POUR PORTE EN CAOUTCHOUC NOIR
BLACK RUBBER DOOR SEAL

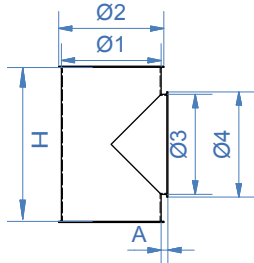


Cod.	Ø 1 mm	Ø 2 mm					
------	-----------	-----------	--	--	--	--	--

111.114.999	120	140					
-------------	-----	-----	--	--	--	--	--



TUBO ISPEZIONE PER TAPPO
TUYAU D'INSPECTION POUR BOUCHON
 INSPECTION PIPE FOR PLUG



Cod.	Ø 1 mm	Ø 2 mm	Ø 3 mm	Ø 4 mm	A mm	H mm			Kg
------	-----------	-----------	-----------	-----------	---------	---------	--	--	----

Disponibile a magazzino - en stock - on stock:

151.115.121	105	113	105	113	10	200	12/10		0,675
151.115.123	120	128	120	128	10	200	12/10		0,690
151.115.125	150	158	150	158	10	200	12/10		0,980
151.115.133	200	208	150	158	12	200	12/10		1,165

A richiesta - sur demand - on demand

151.115.141	105	113	105	113	10	200	15/10		0,80
151.115.143	120	128	120	128	10	200	15/10		0,80
151.115.145	150	158	150	158	10	200	15/10		1,20
151.115.153	200	208	150	158	12	200	15/10		1,80

Chiusura con tappo in gomma

Fermeture avec bouchon de caoutchouc

Closing with rubber cap

Spessore 20/10 a richiesta

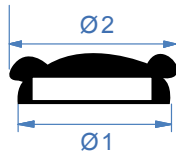
Epaisseurs 20/10 sur demand

20/10 thickness on demand

TAPPO IN GOMMA NERA
BOUCHON EN CAOUTCHOUC NOIR
 BLACK RUBBER CAP



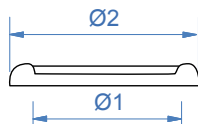
Tipo Maschio
Type Male
 Male Type



Cod.	Ø 1 mm	Ø 2 mm						
151.128.601	105	125						
151.128.603	120	130						
151.128.605	150	175						

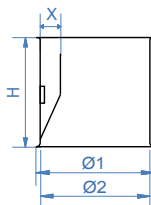


Tipo Femmina
Type Femelle
 Female Type



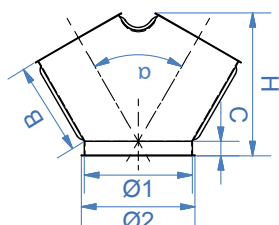
Cod.	Ø 1 mm	Ø 2 mm						
151.128.701	105	120						
151.128.703	120	130						
151.128.705	150	165						
151.128.713	200	215						

PRESA ASPIRAZIONE ARIA
PRISE D'ASPIRATION D'AIR
 AIR INTAKE



Cod.	Ø 1 mm	Ø 2 mm	X mm	H mm			Kg	
151.107.121	105	113	25	85	12/10		0,340	
151.107.122	120	128	25	100	12/10		0,390	
151.107.123	150	158	25	100	12/10		0,540	
151.107.125	200	-	-	-	12/10		0,720	

GIUNZIONI SIMMETRICHE A 60°
JOINT SYMÉTRIQUE À 60°
SYMMETRICAL 60° COUPLINGS



Cod.	Ø 1 mm	Ø 2 mm	H mm	α°	A mm	B mm	C mm	↓ ↑	⊞ Kg
------	-----------	-----------	---------	----	---------	---------	---------	--------	---------

Disponibile a magazzino - *en stock* - *on stock*:

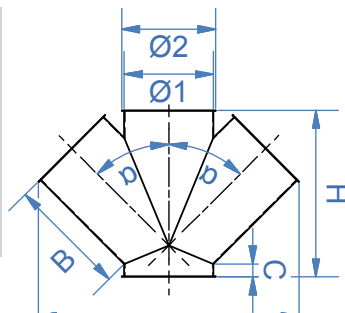
151.118.121	105	113	165	60°	210	180	25	12/10	0,630
151.118.123	120	128	195	60°	240	190	30	12/10	0,770
151.118.125	150	158	230	60°	300	205	30	12/10	1,240
151.118.133	200	208	285	60°	385	180	30	12/10	2,24

A richiesta - *sur demand* - *on demand*

151.118.141	105	113	165	60°	210	180	25	15/10	1,20
151.118.143	120	128	195	60°	240	190	30	15/10	1,60
151.118.145	150	158	230	60°	300	205	30	15/10	2,00
151.118.153	200	208	285	60°	385	180	30	15/10	2,80

Spessore 20/10 a richiesta
Epaisseurs 20/10 sur demand
20/10 thickness on demand

GIUNZIONI SIMMETRICHE DOPPIE
JOINT SYMÉTRIQUE DOUBLE
SYMMETRICAL DOUBLE COUPLINGS



Cod.	Ø 1 mm	Ø 2 mm	H mm	α°	A mm	B mm	C mm	↓ ↑	⊞ Kg
------	-----------	-----------	---------	----	---------	---------	---------	--------	---------

Disponibile a magazzino - *en stock* - *on stock*:

151.121.121	105	113	210	45°	310	140	30	12/10	1,180
151.121.123	120	128	250	45°	350	190	30	12/10	1,660
151.121.125	150	158	275	45°	430	190	30	12/10	2,230
151.121.127	200	208	360	45°	550	240	30	12/10	4,250

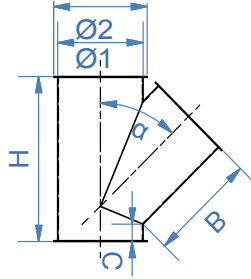
A richiesta - *sur demand* - *on demand*

151.121.141	105	113	210	45°	310	140	30	15/10	1,4
151.121.143	120	128	250	45°	350	190	30	15/10	2,0
151.121.145	150	158	275	45°	430	190	30	15/10	3,0
151.121.153	200	208	360	45°	550	240	30	15/10	4,6

Spessore 20/10 a richiesta
Epaisseurs 20/10 sur demand
20/10 thickness on demand



GIUNZIONI ASIMMETRICHE 30°-40°-45°-60°-75°
 JOINT ASYMÉTRIQUE À 30°-40°-45°-60°-75°
 30°-40°-45°-60°-75° ASYMMETRICAL COUPLING



Cod.	Ø 1 mm	Ø 2 mm	H mm	A mm	B mm	C mm	α°			Kg
------	-----------	-----------	---------	---------	---------	---------	----	--	--	----

Disponibile a magazzino - en stock - on stock:

151.120.121	105	113	300	225	225	40	30°	12/10		1,050
151.120.123	120	128	295	250	240	20	30°	12/10		1,170
151.120.125	150	158	350	300	295	20	30°	12/10		2,195
151.120.133	200	208	375	395	340	70	30°	12/10		5,235

151.120.321	105	113	300	225	225	40	40°	12/10		1,010
151.120.323	120	128	295	250	240	20	40°	12/10		1,150
151.120.325	150	158	350	300	295	20	40°	12/10		2,150
151.120.333	200	208	375	395	340	70	40°	12/10		5,200

151.120.421	105	113	300	225	225	40	45°	12/10		0,910
151.120.423	120	128	295	250	240	20	45°	12/10		1,240
151.120.425	150	158	350	300	295	20	45°	12/10		2,190
151.120.433	200	208	375	395	340	70	45°	12/10		2,865
151.120.621	105	113	215	210	140	25	60°	12/10		0,600
151.120.623	120	128	250	240	165	30	60°	12/10		0,750
151.120.625	150	158	280	290	200	20	60°	12/10		1,210
151.120.633	200	208	375	380	200	40	60°	12/10		2,200

151.120.821	105	113	215	210	140	25	75°	12/10		0,950
151.120.823	120	128	250	240	165	30	75°	12/10		1,180
151.120.825	150	158	280	290	200	20	75°	12/10		2,180
151.120.833	200	208	375	380	200	40	75°	12/10		5,300

151.120.141	105	113	300	225	225	40	30°	15/10		2,100
151.120.143	120	128	295	250	240	20	30°	15/10		2,170
151.120.145	150	158	350	300	295	20	30°	15/10		3,300
151.120.153	200	208	375	395	340	70	30°	15/10		5,800

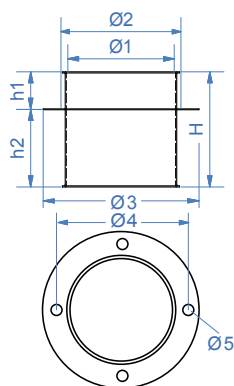
151.120.341	105	113	300	225	225	40	40°	15/10		2,050
151.120.343	120	128	295	250	240	20	40°	15/10		2,150
151.120.345	150	158	350	300	295	20	40°	15/10		2,250
151.120.353	200	208	375	395	340	70	40°	15/10		5,600

151.120.441	105	113	300	225	225	40	45°	15/10		2,060
151.120.443	120	128	295	250	240	20	45°	15/10		2,170
151.120.445	150	158	350	300	295	20	45°	15/10		2,280
151.120.453	200	208	375	395	340	70	45°	15/10		5,680
151.120.641	105	113	215	210	140	25	60°	15/10		2,080
151.120.643	120	128	250	240	165	30	60°	15/10		2,190
151.120.645	150	158	280	290	200	20	60°	15/10		2,300
151.120.653	200	208	375	380	200	40	60°	15/10		5,720

151.120.841	105	113	215	210	140	25	75°	15/10		2,100
151.120.843	120	128	250	240	165	30	75°	15/10		2,220
151.120.845	150	158	280	290	200	20	75°	15/10		2,400
151.120.853	200	208	375	380	200	40	75°	15/10		5,810

Spessore 20/10 a richiesta
 Epaisseurs 20/10 sur demand
 20/10 thickness on demand

TUBO PASSA PAVIMENTO CON FLANGIA
TUYAU PASSE-PAVEMENT AVEC BRIDE
FLOOR-CROSSING PIPE WITH FLANGE



Cod.	Ø 1 mm	Ø 2 mm	Ø 3 mm	Ø 4 mm	H mm	h1 mm	h2 mm	↓ ↑	⊞ Kg	N° F
------	-----------	-----------	-----------	-----------	---------	----------	----------	--------	---------	---------

Disponibile a magazzino - en stock - on stock:

151.104.621	105	113	165		150	50	100	12/10	0,533	4
151.104.623	120	128	180		150	50	100	12/10	0,610	4
151.104.625	150	158	210		150	50	100	12/10	0,880	5
151.104.633	200	208	260		150	50	100	12/10	1,375	4

A richiesta - sur demand - on demand

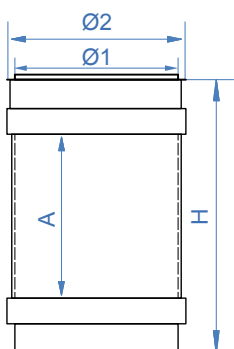
151.104.641	105	113	165		150	50	100	15/10	0,666	4
151.104.643	120	128	180		150	50	100	15/10	0,762	4
151.104.645	150	158	210		150	50	100	15/10	1,100	4
151.104.653	200	208	260		150	50	100	15/10	1,718	4

N° 4 fori Ø 5 a 90°

N° 4 trous Ø 5 de 90°

N° 4 holes Ø 5 of 90°

SPIE VISIVE IN PLEXIGLAS
CYLINDRE DE VISITE EN PLEXIGLAS
PLEXIGLAS SIGHT CYLINDER

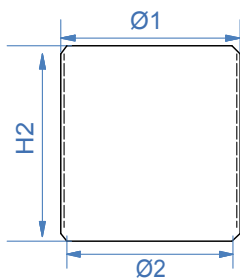
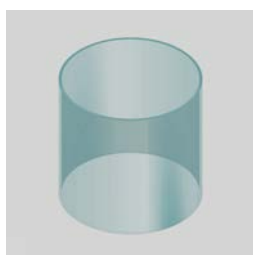


Cod.	Ø 1 mm	Ø 2 mm	A mm	H mm	↓ ↑	⊞ Kg
------	-----------	-----------	---------	---------	--------	---------

Disponibile a magazzino - en stock - on stock:

151.128.961	105	113	100	175	12/10	0,580
151.128.963	120	128	100	180	12/10	0,660
151.128.965	150	158	100	180	12/10	0,825
151.128.973	200	208	200	315	12/10	1,895

TUBO IN PLEXIGLAS PER SPIA VISIVA
TUYAU EN PLEXIGLAS POUR CYLINDRE DE REGARD
SIGHT CYLINDER PLEXIGLASS PIPE

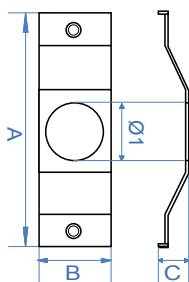


Cod.	Ø 1 mm	Ø 2 mm	H2 mm	⊞ Kg
151.128.422	Ø 105	110	100	0,20
151.128.424	Ø 120	125	115	0,40
151.128.426	Ø 150	160	150	0,40
151.128.428	Ø 200	210	220	0,60



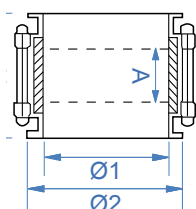


STAFFA PER ATTACCO SENSORE INOX
ÉTRIER POUR ATTAQUE SENSEUR INOXYDABLE
 STAINLESS STEEL SENSOR ATTACK BRACKET



Cod.	Ø 1 mm	A mm	B mm	C mm	Ø 1 mm	±	⊞ Kg	
151.128.622	Ø 105	153	50	35	35	1,20	0,20	
151.128.624	Ø 120	153	50	35	35	1,20	0,20	
151.128.628	Ø 150	153	50	35	35	1,20	0,20	
151.128.630	Ø 200	230	50	35	35	1,20	0,20	

SPIA VISIVA AUTOPORTANTE
CYLINDRE DE REGARD AUTOPORTANT
 SELF-SUPPORTING SIGHT BELL

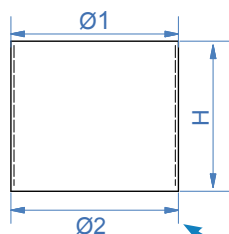
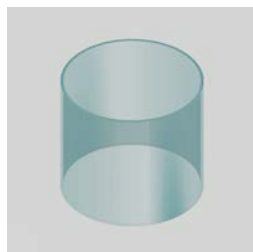


Cod.	Ø 1 mm	Ø 2 mm	A mm	H mm	±	⊞ Kg	
------	-----------	-----------	---------	---------	---	---------	--

Disponibile a magazzino - *en stock* - *on stock*:

151.128.941	105	113	45	105	12/10	0,60	
151.128.943	120	128	45	105	12/10	0,60	
151.128.945	150	158	45	105	12/10	0,625	

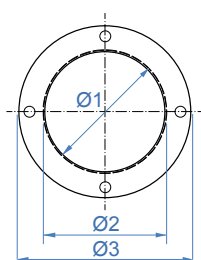
TUBO IN PLEXIGLAS PER SPIA VISIVA AUTOPORTANTE
TUYAU EN PLEXIGLASS POUR CYLINDRE DE VISITE AUTOPORTANT
 SELF SUPPORTING SIGHT BELL PLEXIGLASS PIPE



Cod.	Ø 1 mm	Ø 2 mm	H mm	⊞ Kg	
151.128.921	Ø 105	110	100	75	0,20
151.128.923	Ø 120	125	115	75	0,40
151.128.925	Ø 150	160	150	75	0,40



FLANGE PER TUBI
BRIDES POUR TUYAUX
 FLANGES FOR PIPES



Cod.	Ø 1 mm	Ø 2 mm	Ø 3 mm	±	⊞ Kg	N° F	
------	-----------	-----------	-----------	---	---------	------	--

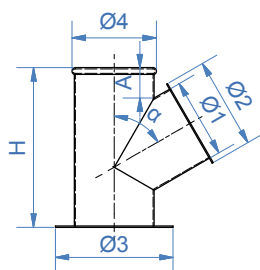
Disponibile a magazzino - *en stock* - *on stock*:

151.104.721	105	123	165	12/10	0,115	4	
151.104.723	120	150	180	12/10	0,130	4	
151.104.725	150	170	210	12/10	0,165	4	
151.104.733	200	219	260	12/10	0,240	4	

A richiesta - *sur demand* - *on demand*:

151.104.741	105	123	165	15/10	0,143	4	
151.104.743	120	150	180	15/10	0,162	4	
151.104.745	150	170	210	15/10	0,206	4	
151.104.753	200	219	260	15/10	0,300	4	

RACCORDO PLANSICHTER
RACCORD PLANSICHTER
PLANSICHTER UNION



Cod.	Ø 1 mm	Ø 2 mm	Ø 3 mm	Ø 4 mm	A mm	α°	H mm	↕	⬆	Kg
------	-----------	-----------	-----------	-----------	---------	----	---------	---	---	----

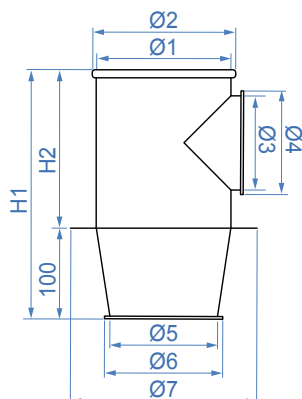
Disponibile a magazzino - en stock - on stock:

151.104.321	105	113	165	110	-	60°	200	12/10	1,12	
151.104.323	120	-	180	125	35	60°	200	12/10	1,210	
151.104.325	150	-	210	155	45	60°	200	12/10	1,265	
151.104.333	-	-	260	205	-	60°	200	12/10	1,686	

A richiesta - sur demand - on demand

151.104.341	105	113	165	110	-	60°	200	15/10	1,40	
151.104.343	120	-	180	125	35	60°	200	15/10	1,512	
151.104.345	150	-	210	155	45	60°	200	15/10	1,581	
151.104.353	200	-	260	205	-	60°	200	15/10	2,100	

BOCCHETTA SCARICO PLANSICHTER
BOUCHE DE DECHARGEMENT PLANSICHTER
PLANSICHTER DISCHARGING OPENING



Cod.	Ø 1 mm	Ø 2 mm	Ø 3 mm	Ø 4 mm	Ø 5 mm	Ø 6 mm	Ø 7 mm	H mm	H1 mm	↕	⬆	Kg
------	-----------	-----------	-----------	-----------	-----------	-----------	-----------	---------	----------	---	---	----

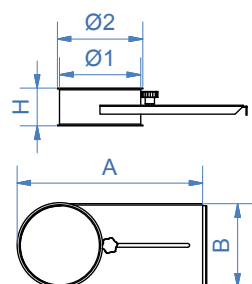
Disponibile a magazzino - en stock - on stock:

151.104.421	105	110	105	113	105	113	145	245	165	12/10	1,21	
151.104.423	120	126	120	128	120	128	160	265	165	12/10	1,31	
151.104.425	150	156	120	128	150	128	190	265	165	12/10	1,46	

A richiesta - sur demand - on demand

151.104.441	105	110	105	113	105	113	145	265	165	15/10	1,56	
151.104.443	120	126	120	128	120	128	160	265	165	15/10	1,69	
151.104.445	150	156	120	128	150	128	190	265	165	15/10	2,35	

SETTORE CON SERRANDA
SECTEUR AVEC VANNE
SEGMENT WITH VALVE



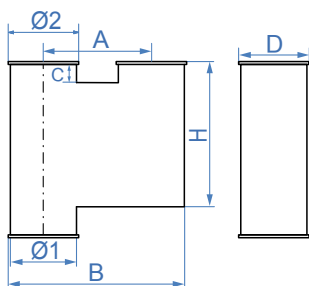
Cod.	Ø 1 mm	Ø 2 mm	H mm	A mm	B mm	↕	⬆	Kg
------	-----------	-----------	---------	---------	---------	---	---	----

Disponibile a magazzino - en stock - on stock:

151.113.121	105	113	50	280	110	12/10	0,815	
151.113.123	120	128	60	310	125	12/10	1,045	
151.113.125	150	158	70	375	155	12/10	1,550	
151.113.133	200	208	80	450	205	12/10	2,295	

A richiesta - sur demand - on demand

151.113.141	105	113	50	280	110	15/10	0,80	
151.113.143	120	128	60	310	125	15/10	1,00	
151.113.145	150	158	70	375	155	15/10	1,60	
151.113.153	200	208	80	450	205	15/10	2,40	


CASSETTA AUTO FRENANTE
 AMORTISSEUR DE CHUTE
 SELF-BREAKING BOX


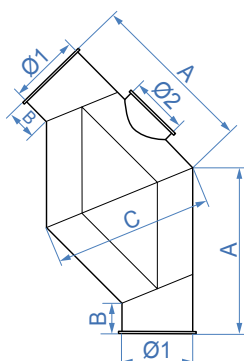
Cod.	Ø 1 mm	Ø 2 mm	A mm	B mm	C mm	D mm	H mm	±	Kg
------	-----------	-----------	---------	---------	---------	---------	---------	---	----

Disponibile a magazzino - en stock - on stock:

151.112.121	105	113	150	270	25	120	260	12/10	2,225
151.112.123	120	128	158	280	25	128	300	12/10	2,675
151.112.125	150	158	165	365	25	170	375	12/10	6,560
151.112.133	200	208	180	465	25	230	500	12/10	8,746

A richiesta - sur demand - on demand

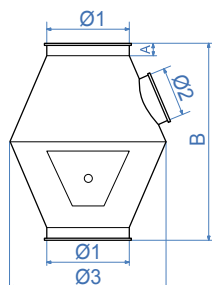
151.112.141	105	113	150	270	25	120	260	15/10	2,80
151.112.143	120	128	158	280	25	128	300	15/10	3,20
151.112.145	150	158	165	365	25	170	375	15/10	5,40
151.112.153	200	208	180	465	25	230	500	15/10	10,93

CURVA FRENANTE A 45°
 COUDE FREINANTE À 45°
 INCLINED BRAKING BEND


Cod.	Ø 1 mm	Ø 2 mm	A mm	B mm	C mm	α°	±	Kg
------	-----------	-----------	---------	---------	---------	----	---	----

A richiesta - sur demand - on demand

151.112.341	105	89	250	40	240	45°	15/10	5,70
151.112.343	120	120	300	60	275	45°	15/10	6,25
151.112.345	150	120	350	60	335	45°	15/10	6,72
151.112.353	120	200	400	100	380	45°	15/10	7,40

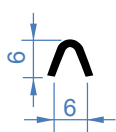
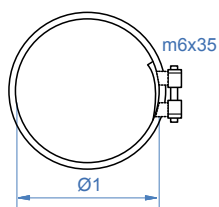
CONO FRENANTE
 CONE FREINANTE
 BRAKING CONE


Cod.	Ø 1 mm	Ø 2 mm	Ø 3 mm	A mm	B mm	±	Kg
------	-----------	-----------	-----------	---------	---------	---	----

A richiesta - sur demand - on demand

151.112.243	120	120	280	30	290	15/10	12,70
151.112.245	150	120	290	30	320	15/10	13,20
151.112.253	200	120	380	30	400	15/10	15,35
151.112.263	250	120	410	30	460	15/10	16,85

ANELLO DI GIUNZIONE INOX AISI 304 CON SORMONTO AD 1 VITE
COLLIER DE JONCTION 1 VIS INOX AISI 304 AVEC CHEVAUCHEMENT
AISI 304 STAINLESS STEEL 1-SCREX COUPLING RING WITH OVERLAP

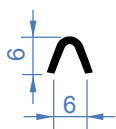
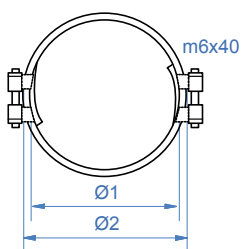


Cod.	Ø 1 mm	$\frac{\downarrow}{\uparrow}$	$\frac{\downarrow}{\uparrow}$ Kg				
------	-----------	-------------------------------	-------------------------------------	--	--	--	--

Disponibile a magazzino - en stock - on stock:

181.107.105	105	0,6	0,04				
181.107.113	113	0,6	0,04				
181.107.120	120	0,6	0,04				
181.107.130	130	0,6	0,04				
181.107.150	150	0,6	0,05				
181.107.160	160	0,6	0,04				
181.107.200	200	0,6	0,06				
181.107.210	210	0,6	0,06				
181.107.250	250	0,6	0,07				
181.107.300	300	0,6	0,07				

ANELLO ZINCATO CON 2 VITI E SORMONTO
COLLIER DE JONCTION 2 VIS GALVANISÉ AVEC CHEVAUCHEMENT
GALVANIZED 2-SCREW COUPLING RING WITH OVERLAP

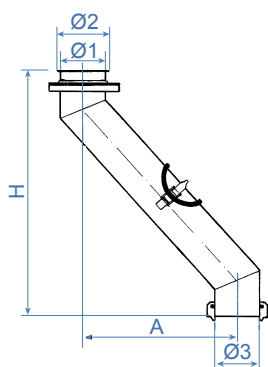
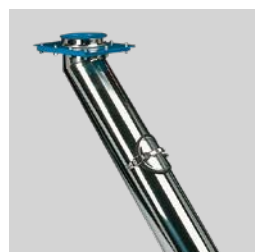


Cod.	Ø 1 mm	$\frac{\downarrow}{\uparrow}$	$\frac{\downarrow}{\uparrow}$ Kg				
------	-----------	-------------------------------	-------------------------------------	--	--	--	--

Disponibile a magazzino - en stock - on stock:

181.108.105	105	0,6	0,04				
181.108.120	120	0,6	0,04				
181.108.150	150	0,6	0,04				
181.108.200	200	0,6	0,04				
181.108.250	250	0,6	0,04				

TUBO PIVOTTANTE PER CARICO COCLEE MULTIPLE
TUYAU PIVOTANT POUR CHARGEMENT VIS MULTIPLES
PIVOTING PIPE FOR MULTIPLE SCREWS CHARGING



Cod.		Ø 1 mm	Ø 2 mm	A mm	H mm	$\frac{\downarrow}{\uparrow}$	$\frac{\downarrow}{\uparrow}$ Kg	
------	--	-----------	-----------	---------	---------	-------------------------------	-------------------------------------	--

A richiesta - sur demand - on demand

151.116.321	TP150	105	113	280	530	12/10	12,40	
151.116.323	TP200	120	128	345	520	12/10	12,80	
151.116.325	TP250	150	158	420	700	12/10	14,24	
151.116.333	TP300	200	208	470	780	12/10	14,80	

Disponibile a magazzino - en stock - on stock:

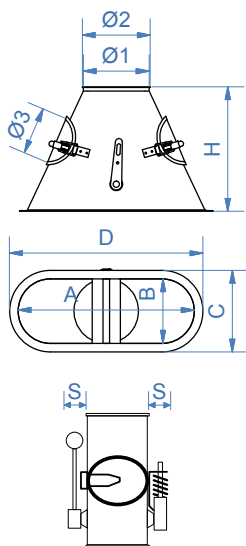
151.116.341	TP150	105	113	280	530	15/10	15,50	
151.116.343	TP200	120	128	345	520	15/10	16,00	
151.116.345	TP250	150	158	420	700	15/10	17,80	
151.116.353	TP300	200	208	470	780	15/10	18,50	

NOTA: Quote valide per il carico di 3 coclee dello stesso diametro.
NOTE: Quote valable pour la charge des 3 tarières avec même diamètre.
NOTE: Quote valid for the load of the 3 augers with same diameter.



VALVOLA FACOLTATIVA CON SPORTELLO PER COCLEE

BOÎTE SYMÉTRIQUE AVEC POIGNÉE POUR VIS
 SYMMETRICAL VALVE WITH HANDLE FOR SCREWS



Cod.	Ø 1 mm	Ø 2 mm	Ø 3 mm	A mm	B mm	C mm	D mm	H mm	S mm	↕ ↕	⬆ ⬆ Kg
------	-----------	-----------	-----------	---------	---------	---------	---------	---------	---------	--------	--------------

A richiesta - *sur demand* - on demand

151.116.121	105	113	140	275	105	145	315	215	35	12/10	1,76
151.116.123	120	128	140	365	120	160	400	255	35	12/10	2,828
151.116.125	150	158	140	410	150	190	455	290	35	12/10	3,36
151.116.133	200	208	140	-	200	-	-	-	35	12/10	4,47

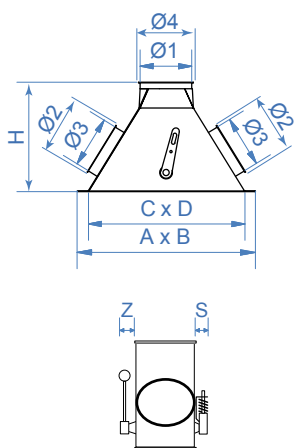
Disponibile a magazzino - *en stock* - on stock:

151.116.141	105	113	140	275	105	145	315	215	35	15/10	2,20
151.116.143	120	128	140	365	120	160	400	255	35	15/10	3,535
151.116.145	150	158	140	410	150	190	455	290	35	15/10	4,20
151.116.153	200	208	140	-	200	-	-	-	35	15/10	5,58

Ispezione con sportello e G.R. - Leva di comando - Arresto a molla
Inspection avec portillon - Levier de commande - Butée à ressort
 Inspection door - Control lever - Spring stop

VALVOLA FACOLTATIVA QUADRA CON ISPEZIONE PER COCLEA

BOÎTE SYMÉTRIQUE CARRÉE AVEC INSPECTION POUR VIS
 SYMMETRICAL SQUARE VALVE WITH INSPECTION FOR SCREWS



Cod.	Ø 1 mm	Ø 2 mm	Ø 3 mm	Ø 4 mm	A x B mm	C x D mm	H mm	Z mm	S mm	↕ ↕	⬆ ⬆ Kg
------	-----------	-----------	-----------	-----------	-------------	-------------	---------	---------	---------	--------	--------------

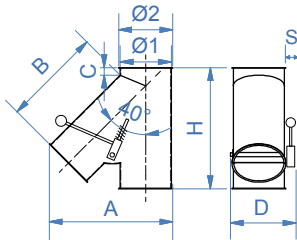
A richiesta - *sur demand* - on demand

151.116.521	105	113	105	113	330x160	280x105	210	50	35	12/10	2,208
151.116.523	120	128	120	128	430x170	360x120	270	50	35	12/10	3,048
151.116.525	150	158	150	158	470x210	405x150	285	50	35	12/10	3,81
151.116.533	200	208	200	208	-	-	-	50	35	12/10	5,08

Disponibile a magazzino - *en stock* - on stock:

151.116.541	105	113	105	113	330x160	280x105	210	50	35	15/10	2,760
151.116.543	120	128	120	128	430x170	360x120	270	50	35	15/10	3,810
151.116.545	150	158	150	158	470x210	405x150	285	50	35	15/10	4,762
151.116.553	200	208	200	208	-	-	-	50	35	15/10	6,350

VALVOLA ASIMMETRICA A 2 VIE CON LEVA DI COMANDO E ARRESTO A MOLLA
BOÎTE ASYMÉTRIQUE A 2 DIRECTIONS AVEC POIGNÉE ET DISPOSITIF DE BLOCAGE À RESSORT
2-WAY ASYMMETRICAL VALVE WITH BAR AND SPRING SELECTOR



Cod.	Ø 1 mm	Ø 2 mm	α°	H mm	A mm	B mm	C mm	D mm	S mm		Kg
------	-----------	-----------	----	---------	---------	---------	---------	---------	---------	--	----

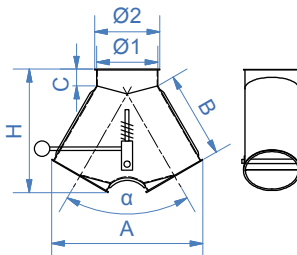
A richiesta - sur demand - on demand

151.623.121	105	113	40°	250	240	205	10	150	35	12/10	1,76
151.623.123	120	128	40°	290	280	245	10	170	35	12/10	2,50
151.623.125	150	158	40°	355	345	290	10	200	35	12/10	3,52
151.623.133	200	208	40°	480	490	410	20	225	35	12/10	4,49

Disponibile a magazzino - en stock - on stock:

151.623.141	105	113	40°	250	240	205	10	150	35	15/10	2,20
151.623.143	120	128	40°	290	280	245	10	170	35	15/10	3,125
151.623.145	150	158	40°	355	345	290	10	200	35	15/10	4,40
151.623.153	200	208	40°	480	490	410	20	225	35	15/10	5,86

VALVOLA SIMMETRICA A 2 VIE CON LEVA DI COMANDO E ARRESTO A MOLLA
BOÎTE SYMÉTRIQUE A 2 DIRECTIONS AVEC POIGNÉE ET DISPOSITIF DE BLOCAGE À RESSORT
2-WAY SYMMETRICAL VALVE WITH BAR AND SPRING SELECTOR



Cod.	Ø 1 mm	Ø 2 mm	α°	H mm	A mm	B mm	C mm	S mm		Kg
------	-----------	-----------	----	---------	---------	---------	---------	---------	--	----

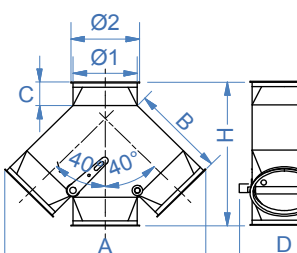
A richiesta - sur demand - on demand

151.624.121	105	113	60°	185	245	165	10	30	12/10	1,344
151.624.123	120	128	60°	220	300	180	10	30	12/10	1,536
151.624.125	150	158	60°	225	320	195	10	30	12/10	1,96
151.624.133	200	208	60°	340	430	260	20	35	12/10	3,696

Disponibile a magazzino - en stock - on stock:

151.624.141	105	113	60°	185	245	165	10	30	15/10	1,680
151.624.143	120	128	60°	220	300	180	10	30	15/10	1,920
151.624.145	150	158	60°	225	320	195	10	30	15/10	2,450
151.624.153	200	208	60°	340	430	260	20	35	15/10	4,620

VALVOLA SIMMETRICA MANUALE 3 VIE CON LEVA DI COMANDO E ARRESTO A MOLLA
BOÎTE SYMÉTRIQUE A 3 DIRECTIONS MANUELLE AVEC POIGNÉE ET DISPOSITIF DE BLOCAGE À RESSORT
3-WAY SYMMETRICAL MANUAL VALVE WITH BAR AND SPRING SELECTOR



Cod.	Ø 1 mm	Ø 2 mm	H mm	A mm	B mm	C mm	D mm		Kg
------	-----------	-----------	---------	---------	---------	---------	---------	--	----

A richiesta - sur demand - on demand

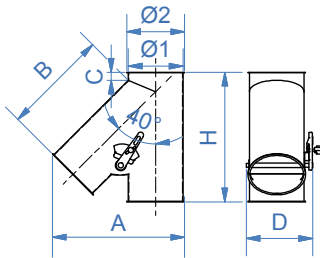
151.624.321	105	113	230	220	160	10	145	12/10	3,283
151.624.323	120	128	245	370	230	10	200	12/10	3,752
151.624.325	150	158	355	355	290	10	190	12/10	6,164
151.624.333	200	208	480	490	420	20	235	12/10	8,218

Disponibile a magazzino - en stock - on stock:

151.624.341	105	113	230	220	160	10	145	15/10	4,103
151.624.343	120	128	245	370	230	10	200	15/10	4,690
151.624.345	150	158	355	355	290	10	190	15/10	7,705
151.624.353	200	208	480	490	420	20	235	15/10	10,272



VALVOLA ASIMMETRICA A 2 VIE CON MANIGLIA DI COMANDO - ARRESTO CON VITE
 VANNES ASYMÉTRIQUES À 2 DIRECTIONS AVEC POIGNÉE DE COMMANDE - BUTÉE À VIS
 2-WAY ASYMMETRICAL VALVES WITH CONTROL HANDLE - SCREW STOP



Cod.	Ø 1 mm	Ø 2 mm	H mm	A mm	B mm	C mm	D mm	$\frac{\downarrow}{\uparrow}$	Kg	α°	
------	-----------	-----------	---------	---------	---------	---------	---------	-------------------------------	----	----------------	--

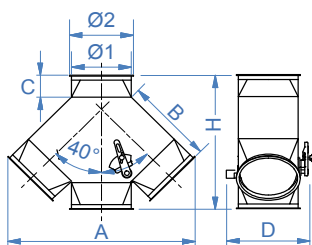
A richiesta - *sur demand* - on demand

151.623.621	105	113	230	220	160	10	145	12/10	2,065	40°	
151.623.623	120	128	260	275	210	10	190	12/10	2,36	40°	
151.623.625	150	158	355	355	290	10	190	12/10	2,95	40°	
151.623.633	200	208	480	490	410	20	225	12/10	3,93	40°	

Disponibile a magazzino - *en stock* - on stock:

151.623.641	105	113	230	220	160	10	145	15/10	2,581	40°	
151.623.643	120	128	260	275	210	10	190	15/10	2,950	40°	
151.623.645	150	158	355	355	290	10	190	15/10	3,687	40°	
151.623.653	200	208	480	490	410	20	225	15/10	4,912	40°	

VALVOLA ASIMMETRICA A 3 VIE CON MANIGLIA DI COMANDO - ARRESTO CON VITE
 VANNES ASYMÉTRIQUES À 3 DIRECTIONS AVEC POIGNÉE DE COMMANDE - BUTÉE À VIS
 3-WAY ASYMMETRICAL VALVES WITH CONTROL HANDLE - SCREW STOP



Cod.	Ø 1 mm	Ø 2 mm	H mm	A mm	B mm	C mm	D mm	$\frac{\downarrow}{\uparrow}$	Kg	α°	
------	-----------	-----------	---------	---------	---------	---------	---------	-------------------------------	----	----------------	--

A richiesta - *sur demand* - on demand

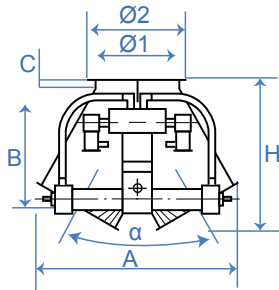
151.624.721	105	113	230	220	160	10	145	12/10	3,924	40°	
151.624.723	120	128	290	370	230	50	115	12/10	3,456	40°	
151.624.725	150	158	355	355	290	10	190	12/10	4,32	40°	
151.624.733	200	208	480	490	420	20	235	12/10	5,75	40°	

Disponibile a magazzino - *en stock* - on stock:

151.624.741	105	113	230	220	160	10	145	15/10	3,780	40°	
151.624.743	120	128	290	370	230	50	115	15/10	4,320	40°	
151.624.745	150	158	355	355	290	10	190	15/10	5,400	40°	
151.624.753	200	208	480	490	420	20	235	15/10	7,187	40°	



VALVOLA SIMMETRICA A 2 VIE ELETTROPNEUMATICA CON PISTONE ROTANTE
BOÎTE SYMÉTRIQUE A 2 DIRECTIONS ÉLECTROPNEUMATIQUE AVEC PISTON ROTATIF
2-WAY SYMMETRICAL ELECTROPNEUMATIC VALVE WITH ROTARY PISTON



Cod.	Ø 1 mm	Ø 2 mm	H mm	A mm	B mm	C mm	α°			Kg
------	-----------	-----------	---------	---------	---------	---------	----	--	--	----

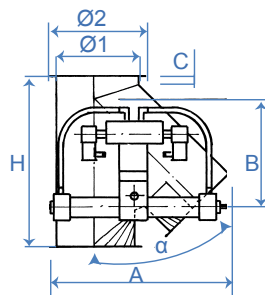
A richiesta - *sur demand* - on demand

151.624.821	105	113	210	275	185	10	60°	12/10	3,043	
151.624.823	120	128	230	300	185	10	60°	12/10	3,478	
151.624.825	150	158	265	350	185	20	60°	12/10	4,348	
151.624.833	200	208	310	430	185	20	60°	12/10	5,252	

Disponibile a magazzino - *en stock* - on stock:

151.624.841	105	113	210	275	185	10	60°	15/10	3,803	
151.624.843	120	128	230	300	185	10	60°	15/10	4,347	
151.624.845	150	158	265	350	185	20	60°	15/10	5,435	
151.624.853	200	208	310	430	185	20	60°	15/10	6,565	

VALVOLA ASIMMETRICA A 2 VIE ELETTROPNEUMATICA CON PISTONE ROTANTE
BOÎTE ASYMÉTRIQUE A 2 DIRECTIONS ÉLECTROPNEUMATIQUE AVEC PISTON ROTATIF
2-WAY ASYMMETRICAL ELECTROPNEUMATIC VALVE WITH ROTARY PISTON



Cod.	Ø 1 mm	Ø 2 mm	H mm	A mm	B mm	C mm	α°			Kg
------	-----------	-----------	---------	---------	---------	---------	----	--	--	----

A richiesta - *sur demand* - on demand

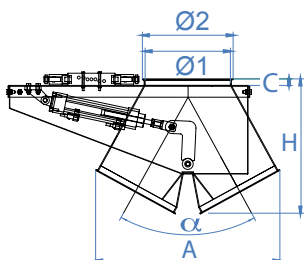
151.623.821	105	113	250	248	185	10	40°	12/10	2,712	
151.623.823	120	128	290	280	185	10	40°	12/10	3,256	
151.623.825	150	158	315	324	185	20	40°	12/10	4,07	
151.623.833	200	208	395	408	185	20	40°	12/10	7,516	

Disponibile a magazzino - *en stock* - on stock:

151.623.841	105	113	250	248	185	10	40°	15/10	3,390	
151.623.843	120	128	290	280	185	10	40°	15/10	4,070	
151.623.845	150	158	315	324	185	20	40°	15/10	5,087	
151.623.853	200	208	395	408	185	20	40°	15/10	9,395	



VALVOLA SIMMETRICA A 2 VIE CON CILINDRO LINEARE
 BOÎTE SYMÉTRIQUE A 2 DIRECTIONS AVEC CYLINDRE LINÉAIRE
 2-WAY SYMMETRICAL VALVE WITH LINEAR CYLINDER



Cod.	Ø 1 mm	Ø 2 mm	H mm	A mm	C mm	α°			Kg
------	-----------	-----------	---------	---------	---------	----	--	--	----

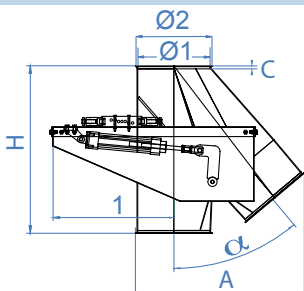
A richiesta - *sur demand* - on demand

151.624.921	105	113	185	275	10	60°	12/10		3,043
151.624.923	120	128	220	300	10	60°	12/10		3,478
151.624.925	150	158	225	350	20	60°	12/10		4,348
151.624.933	200	208	310	430	20	60°	12/10		5,252

Disponibile a magazzino - *en stock* - on stock:

151.624.941	105	113	185	275	10	60°	15/10		3,803
151.624.943	120	128	220	300	10	60°	15/10		4,347
151.624.945	150	158	225	350	20	60°	15/10		5,435
151.624.953	200	208	310	430	20	60°	15/10		6,565

VALVOLA ASIMMETRICA A 2 VIE CON CILINDRO LINEARE
 BOÎTE ASYMÉTRIQUE A 2 DIRECTIONS AVEC CYLINDRE LINÉAIRE
 2-WAY ASYMMETRICAL VALVE WITH LINEAR CYLINDER



Cod.	Ø 1 mm	Ø 2 mm	H mm	A mm	C mm	α°			Kg
------	-----------	-----------	---------	---------	---------	----	--	--	----

A richiesta - *sur demand* - on demand

151.623.921	105	113	250	248	10	40°	12/10		2,712
151.623.923	120	128	290	280	10	40°	12/10		3,256
151.623.925	150	158	315	324	20	40°	12/10		4,070
151.623.933	200	208	395	408	20	40°	12/10		7,516

Disponibile a magazzino - *en stock* - on stock:

151.623.941	105	113	250	248	10	40°	15/10		3,390
151.623.943	120	128	290	280	10	40°	15/10		4,070
151.623.945	150	158	315	324	20	40°	15/10		5,087
151.623.953	200	208	395	408	20	40°	15/10		9,395