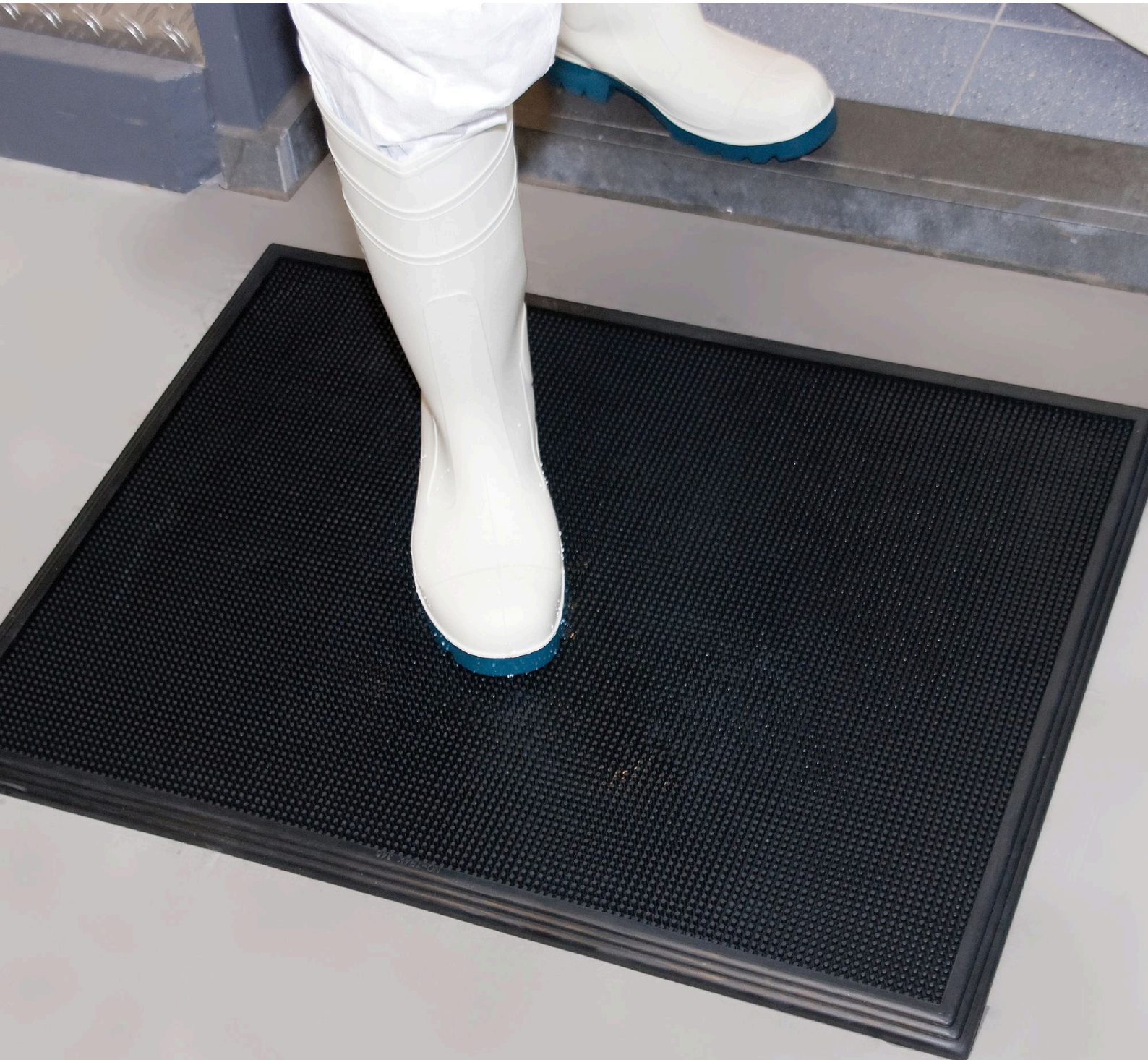


346 Sani-Trax[®]

Disinfecting foot bath entrance mat



Ergonomic, Anti-fatigue & Safety Matting - Hygiene Matting

346 Sani-Trax®

This mat cleans and sanitizes shoes, recommended at entrances to all food processing areas. As traffic passes, rubber tips bend to immerse soles in disinfectant solution, a double action that keeps contamination from reaching food processing areas.

- Convenient mat size fits most doorways
- Suction cups on underside prevents mat from shifting
- 100% tough natural rubber compound; designed to resist to most chemicals and variations in temperature
- Thousands of flexible fingers provide an automatic scrubbing action that dislodges contaminants from footwear.

Recommended use

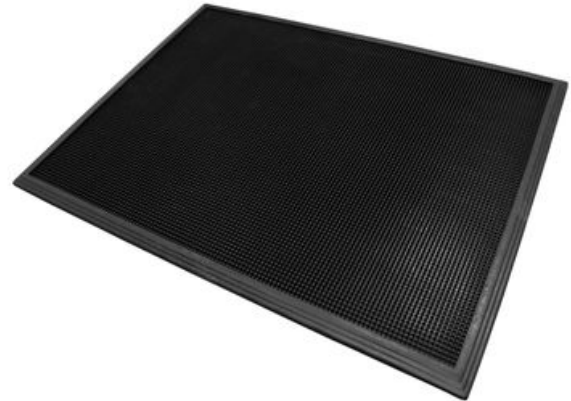
- Wet/Dry Areas
- At doorways, starter rooms, packaging areas, laboratories, employee locker rooms, break rooms, refuse areas and receiving areas. Any place where spread of contamination needs to be limited.
- Heavy traffic

Colors:

- Black

Sizes:

- 45cm x 60cm
- 61cm x 81cm



WEAR RESISTANCE

SLIP RESISTANCE

ANTI-FATIGUE

GOOD BETTER BEST



Ergonomic, Anti-fatigue & Safety Matting - Hygiene Matting Sani-Trax®

General

Brand	Notrax
Category	Hygiene Matting
Product Number	346
Product Family	Industrial & Commercial Matting
Product Group	Ergonomic, Anti-fatigue & Safety Matting
Product Name	Sani-Trax®
Recommended use	At doorways, starter rooms, packaging areas, laboratories, employee locker rooms, break rooms, refuse areas and receiving areas. Any place where spread of contamination needs to be limited.
Shipping Location	Achterzeedijk 57, Unit 15, Barendrecht 2992SB, The Netherlands, Chicago, IL 60638, United States
Type	Disinfecting Foot Bath
Update trigger	20210310-1301
Usage Intensity	Heavy traffic

Sustainability

REACH	Reach compliant (Registration, Evaluation, Authorization and Restriction of Chemicals).
Reach APAC	Reach compliant (Registration, Evaluation, Authorization and Restriction of Chemicals).
Recycled	True
Rohs APAC	Rohs compliant (Restriction of Hazardous Substances).
Rohs EU	Rohs compliant (Restriction of Hazardous Substances).
Rohs US	Rohs compliant (Restriction of Hazardous Substances).
Sustainability	Recyclable material
Warranty (years)	1

Tests

Fire rating US	Pass
----------------	------

Technical Specifications

Application	Industrial Environments
Edges	Moulded bevelled edges on all sides
Material	Natural rubber
Material Group	Natural rubber
Process	Compression Moulding
Temperature Range	- 40 ° C up to + 120 ° C

Sani-Trax® Black



346S2432BL

346S1824BL

Art. nr.	Dimension (cm)	Weight (kg)	Thickness (mm)
346S2432BL	61cm x 81cm	6.2	19
346S1824BL	45cm x 60cm	3.5	19