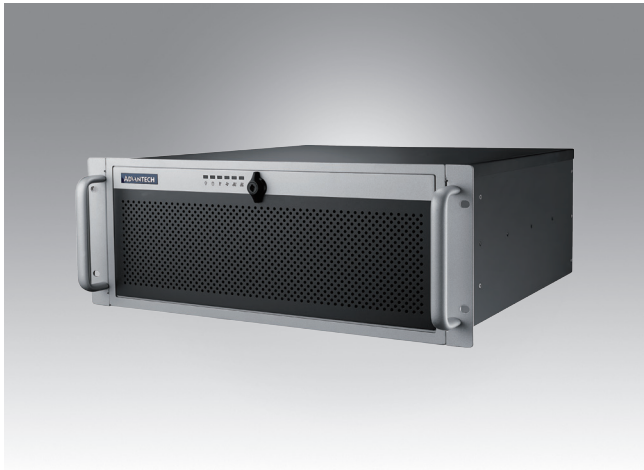


ACP-4340

4U Rackmount Chassis for Full-size SHB/SBC or ATX/MicroATX Motherboard with 4 Hot Swap Drive Trays



Features

- Supports a PICMG backplane with up to 14 slots or an ATX/Micro-ATX motherboard
- Shock-resistant disk drive bay holds four hot-swap 3.5" and 2.5" SAS/SATA disk trays, one slim optical disk drive, and one 2.5" internal drive
- Dual front USB 3.0 ports
- Front-accessible system fan without opening top cover for easy maintenance
- LED indicators and alarm notification for system fault detection
- Smart fan speed control
- Built-in Intrusion switch function
- Built-in Intelligent System Module enabling whole system fan control and remote manageability

Quiet

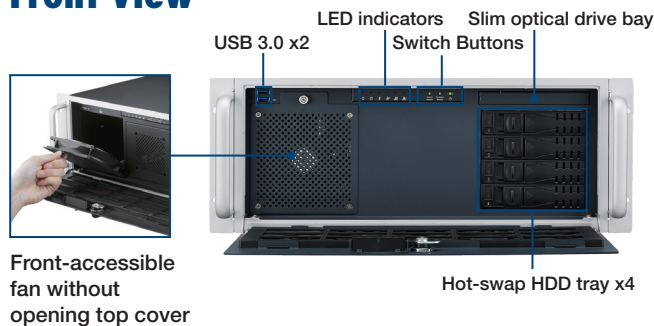
CE FCC

Specifications

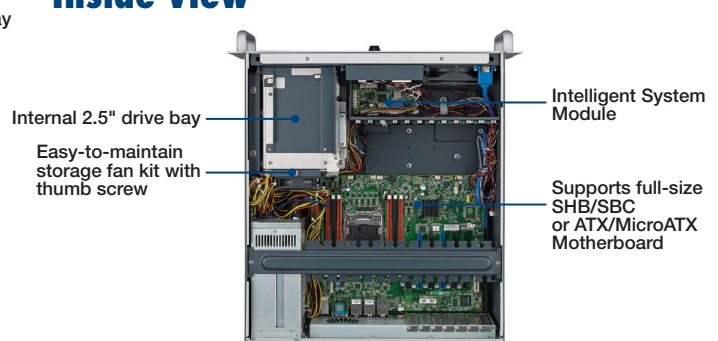
		External	Internal
Drive Bay	Slim Optical Drive Bay	1	-
	3.5"	-	-
	2.5"	-	1
	Hot Swap	4 (Compatible with 3.5" or 2.5" devices)	-
Cooling	Fan	1 (12 cm /74 CFM) + 1 (8 cm/56 CFM) for SAS/SATA storage unit	
	Air Filter	Yes	
Front I/O Interface	USB 3.0*	2	
Miscellaneous	LED Indicators	Power, HDD, temperature, fan, LAN1, and LAN2	
	Rear Panel	Backplane version: One 9-pin D-Sub opening Motherboard version: Five 9-pin D-Sub and one 68-pin SCSI openings	
System Monitoring		Chassis intrusion switch	
Intelligent System Module Remote Monitoring	CPU/System fan speed, CPU/system temperature, motherboard voltage (Only selected Advantech MBs/CPU cards with SUSIAccess installed can fully enable these functions, check with Advantech local rep. for detailed information.)		
Environment	Temperature	Operating 0 ~ 40 °C (32 ~ 104 °F)	Non-Operating -40 ~ 70 °C (-40 ~ 156 °F)
	Humidity	10 ~ 85% @ 40 °C, non-condensing	
	Vibration (5 ~ 500 Hz)	1 Grms	2 G
	Shock	10 G (with 11 ms duration, half sine wave)	
Physical Characteristics	Dimensions (W x H x D)	482 x 177 x 479 mm (19" x 7.0" x 18.8")	
	Weight	12.5 kg (27.5 lb)	

* The USB ports do not operate normally if a main board with USB 2.0 internal connector only is installed.

Front View



Inside View



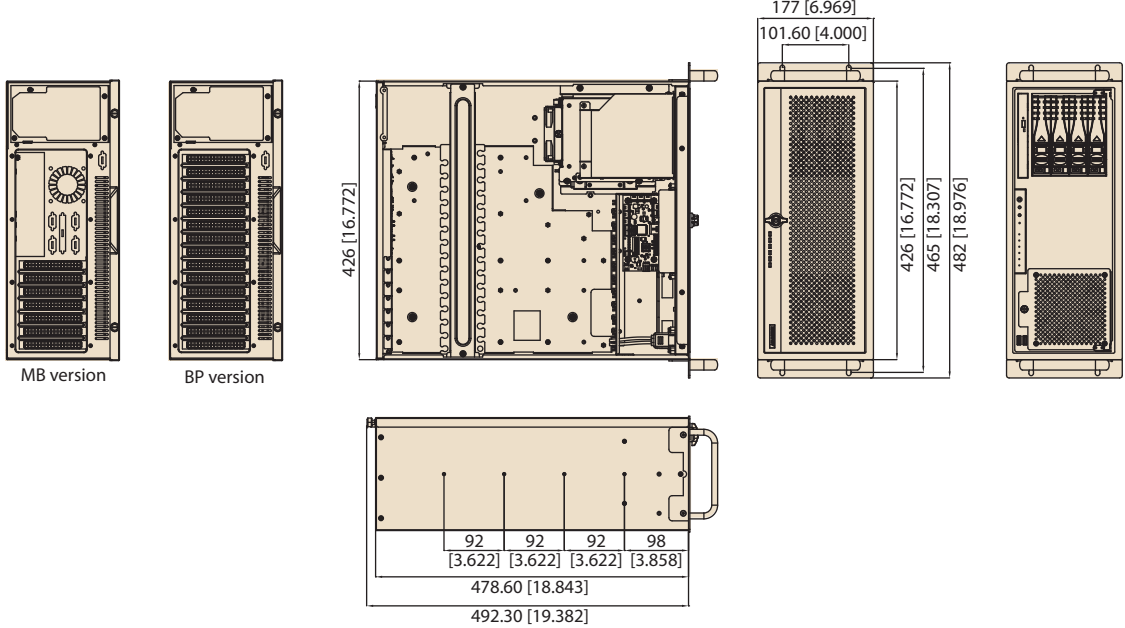
Rear View



*Note: Backplane, SBC, motherboard, and power supply are not included.

Dimensions

Unit: mm [inch]



Ordering Information

Part Number	Power Supply	Wattage	Switch type
Backplane Version			
ACP-4340BP-00XE	-	-	ATX
ACP-4340BP-40XE	96PS-A400WPS2	400W	ATX
Mother board Version			
ACP-4340MB-00XE	-	-	ATX
ACP-4340MB-40ZE	96PS-A400WPS2	400W	ATX

Optional Accessories

Part Number	Description
96CB-SATAPOWER-6P1	SATA power wire 6-pin to big 4-pin (for slim ODD)
98R1434000E	ACP-4340 fan kit for multi GPU card

Spare Parts

Part Number	Description
9662132020E	Black mobile HDD tray
1990021256T000	Door filter

Power Supply Options

Part Number	80 Plus Grade	Watts	Type	Input
PS8-400ATX-ZE	Bronze	400W	Single	AC 100 ~ 240 V (full range)
PS8-500ATX-ZE	Bronze	500W	Single	AC 100 ~ 240 V (full range)
PS8-700ATX-ZE	Bronze	700W	Single	AC 100 ~ 240 V (full range)
RPS8-500ATX-XE	Bronze	500W	1+1 Redundant	AC 100 ~ 240 V (full range)