

# Ultrasonic hand cutter

## HC35-6 / HC35-8

ULTRASONIC HAND UNITS

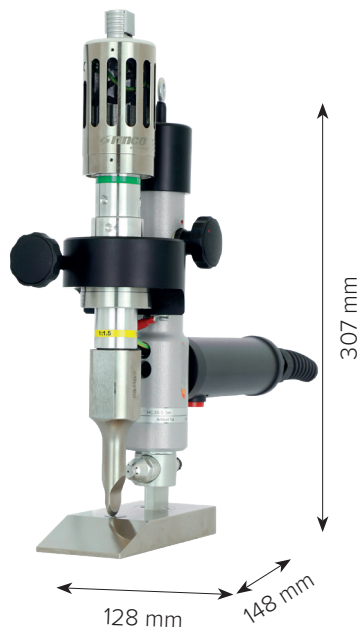


NEW



**rinco**<sup>®</sup>  
ultrasonics  
Technology **that moves**

# HC35-6 / HC35-8 - Clean cutting and sealing



**HC35-6 / HC35-8**

HC35-6 and HC35-8 hand cutters are suitable for manual cutting of textiles and fabrics with a synthetic content. They are suitable for straight cuts as well as for contour cutting.

Thanks to the cutting sonotrode and the flat foot, the textile slides evenly over the foot. The edges are sealed automatically during the cutting process.

The hand cutters are compatible with Ecoline35, RDG35 or SDG35 generators.



**ECOLINE35**






**RDG35**

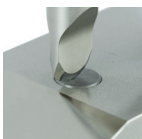


**SDG35**

## HC35-6

## HC35-8

<b>KHZ</b>	Operating frequency:	35 kHz	35 kHz
	Compatible generators:	Ecoline35	RDG35, SDG35
	Output power:	400 W	200, 400, 750, 900 W
	Amplitude:	40 - 100 %	RDG35: 40 - 100 % SDG35: 15 - 100 %
	Operating mode:	Continuous	Continuous, contact disconnection, time (SDG only), energy (SDG only)
	Weight:	1.6 kg incl. converter 1.8 kg incl. converter and booster	1.6 kg incl. converter 1.8 kg incl. converter and booster



### LESS WEAR

The carbide plate in the foot can be turned over and turned around when worn.

---

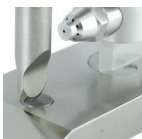
### OPTIMISED CUTTING PROCESS

Cutting cycles can be shortened with a fast cutting speed and simultaneous edge sealing. The cutting process is triggered by a button on the handle.

---

### CUTTING FORCE

The cutting force can be adjusted easily and continuously.



### AIR COOLING

Air cooling for the sonotrode and the converter is pre-integrated for continuous applications.

---

### CUTTING QUALITY

The cut and cut edge are of very high quality due to the ultrasonic technology. The flat foot and Teflon inserts allow the hand unit to slide smoothly and easily over the textile.

---

### SIMPLE SETUP

Setup and service are very simple thanks to the lifting function of the oscillator system. It also takes next to no time to adapt to different material thicknesses.

---

### HIGH PROCESS RELIABILITY

RINCO units operate very **reliably** and have a **long service life**.

We would be delighted to assist you should you require further information. Contact us at: [info@rincoultrasonics.com](mailto:info@rincoultrasonics.com) or on +41 (0)71 466 41 00.

## FIELDS OF APPLICATION



AUTOMOTIVE



HIGH-TECH



PACKAGING



FOOD



NON-WOVEN & TEXTILE



MEDICAL

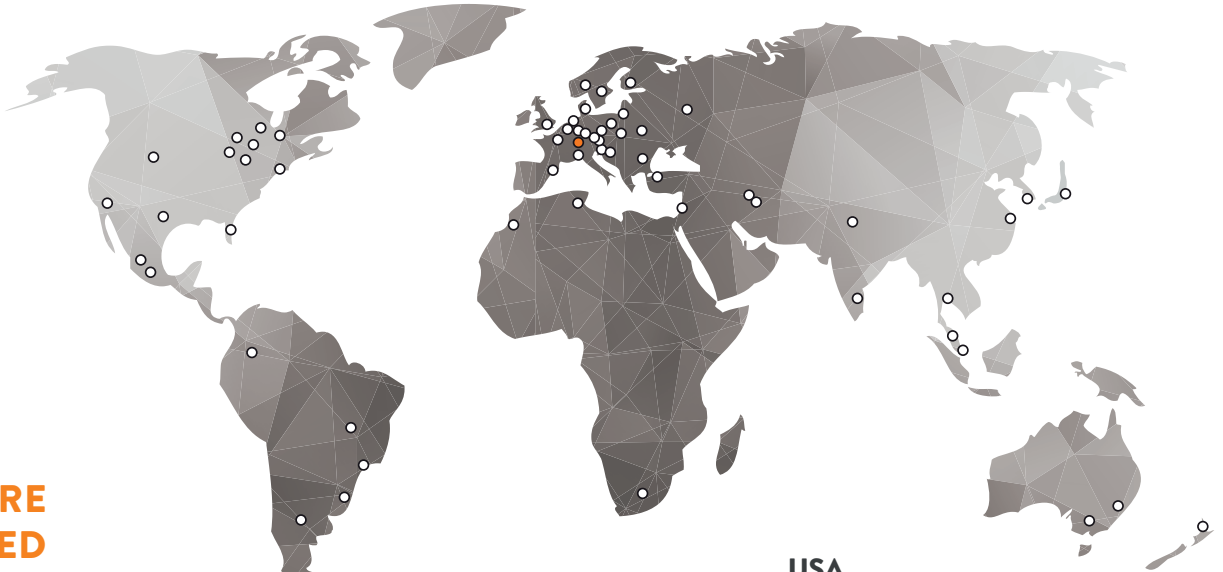


HOUSEHOLD

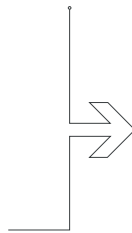


COSMETICS

CUTTING  
SEALING



**WE ARE  
FOCUSED  
COMMITTED  
GLOBAL  
LOCAL**



## EUROPE

---

### SWITZERLAND

[rincoultrasonics.ch](http://rincoultrasonics.ch)

---

### GERMANY

[rincoultrasonics.de](http://rincoultrasonics.de)

---

### FRANCE

[rinco-france.com](http://rinco-france.com)

---

### SPAIN

[rincoultrasonics.es](http://rincoultrasonics.es)

---

### ITALY

[rincoultrasonics.it](http://rincoultrasonics.it)

---

### SWEDEN

[rincoultrasonics.se](http://rincoultrasonics.se)

---

### DENMARK

[rincoultrasonics.dk](http://rincoultrasonics.dk)

## USA

---

[rinco-usa.com](http://rinco-usa.com)

## ASIA

---

### CHINA

[rincochina.com](http://rincochina.com)

---

### INDIA

[rincoindia.com](http://rincoindia.com)

---

### JAPAN

[uthe.co.jp](http://uthe.co.jp)

---

### SOUTH-EAST ASIA

MALAYSIA (SEA headquarters)

INDONESIA

PHILIPPINES

SINGAPORE

THAILAND

VIETNAM

[rinco-SEAsia.com](http://rinco-SEAsia.com)



CONTACT US FOR MORE INFORMATION

**[rincoultrasonics.com](http://rincoultrasonics.com)**

**[info@rincoultrasonics.com](mailto:info@rincoultrasonics.com)**

**+41 71 466 41 00**

Industriestrasse 4  
CH-8590 Romanshorn  
Switzerland

