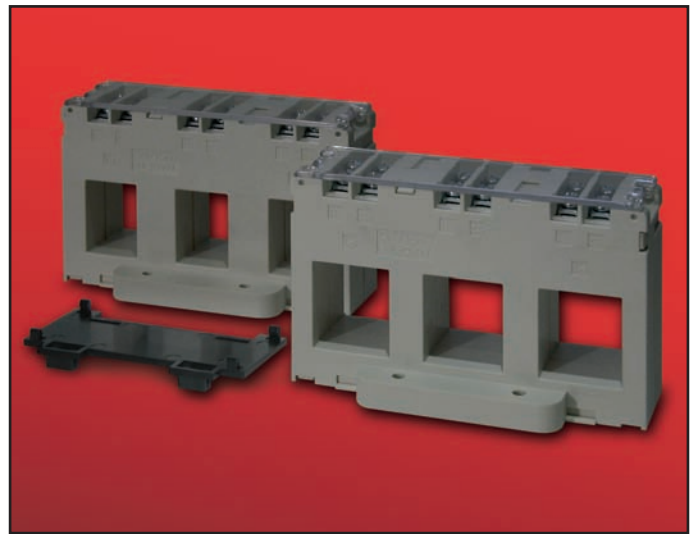


DESCRIPTION

Miniature three phase current transformers suitable for primary ranges from 250A-630A with 5A secondary. Supplied with terminal cover and choice of fixings, and available with either 25mm or 31mm apertures.

APPLICATION

For installation onto cables or 31mm maximum busbars. The products have an overall width of 140mm allowing installation directly on top of moulded case circuit breakers.



TECHNICAL SPECIFICATION

- Conforms to IEC185, BS 7626, BSEN 60044-1 and IEC 60044-1.
- Rated system voltage 0.72/3kV.
- Ambient temperature range -30°C to 80°C.
- Frequency range 50-60Hz.
- Insulation level 3kV for 1 minute.
- Continuous current 1.2 x rated current.

RANGE

PRIMARY CURRENT	FOOT MOUNTED 25mm APERTURES	DIN RAIL MOUNTED 25mm APERTURES
250A	CT140F-250/5-2.5/1-25	CT140D-250/5-2.5/1-25
300A	CT140F-300/5-2.5/1-25	CT140D-300/5-2.5/1-25
400A	CT140F-400/5-2.5/1-25	CT140D-400/5-2.5/1-25
500A	CT140F-500/5-2.5/1-25	CT140D-500/5-2.5/1-25
600A	CT140F-600/5-2.5/1-25	CT140D-600/5-2.5/1-25
630A	CT140F-630/5-2.5/1-25	CT140D-630/5-2.5/1-25

PRIMARY CURRENT	FOOT MOUNTED 31mm APERTURES	DIN RAIL MOUNTED 31mm APERTURES
250A	CT140F-250/5-2.5/1-31	CT140D-250/5-2.5/1-31
300A	CT140F-300/5-2.5/1-31	CT140D-300/5-2.5/1-31
400A	CT140F-400/5-2.5/1-31	CT140D-400/5-2.5/1-31
500A	CT140F-500/5-2.5/1-31	CT140D-500/5-2.5/1-31
600A	CT140F-600/5-2.5/1-31	CT140D-600/5-2.5/1-31
630A	CT140F-630/5-2.5/1-31	CT140D-630/5-2.5/1-31

All models are 2.5VA class 1. Other VA's, accuracies by request.
NOTE: Foot mounted version with 25mm apertures will be supplied unless specified otherwise on orders.

DIMENSIONS (mm)

