



## Performance Qualification

### • UV Detector Linearity

#### • Instruments and Fluidics

Instrument Name	Model	Supplier's Name	Serial Number
Pump	G1311A	DIONEX	DE40926267
Autosampler	G1329A	DIONEX	DE03013070
Column Oven	Other	DIONEX	not available
<b>UV Detector</b>	<b>G1314A</b>	<b>DIONEX</b>	<b>JP73704500</b>
Chromeleon Datasystem	V. 6.80 SR15 Build 4656 (243203)	DIONEX	1904

Accessories	Name
Back Pressure Device	Capillary (L:15 m; ID:0,18 mm)
Sample 2	Caffeine in Water 10 µg/ml
Sample 3	Caffeine in Water 60 µg/ml
Sample 4	Caffeine in Water 140 µg/ml
Sample 5	Caffeine in Water 220 µg/ml
Sample 6	Caffeine in Water 300 µg/ml
Solvent A	Water (HPLC-Grade)

#### • Additional Information

Customer: Customer's Name  
 Operator: Operator's Name  
 Operator's Jobtitle

Execution Date: juin-23-20  
 Next Qualification: déc-20

#### • Limits, Values and Test Results

	Limit	Observed Value	Result
Detector Linearity - Corr. (UV)	99,900 %	99,918 %	Test passed
Detector Linearity	5,000 % RSD	3,962 % RSD	Test passed

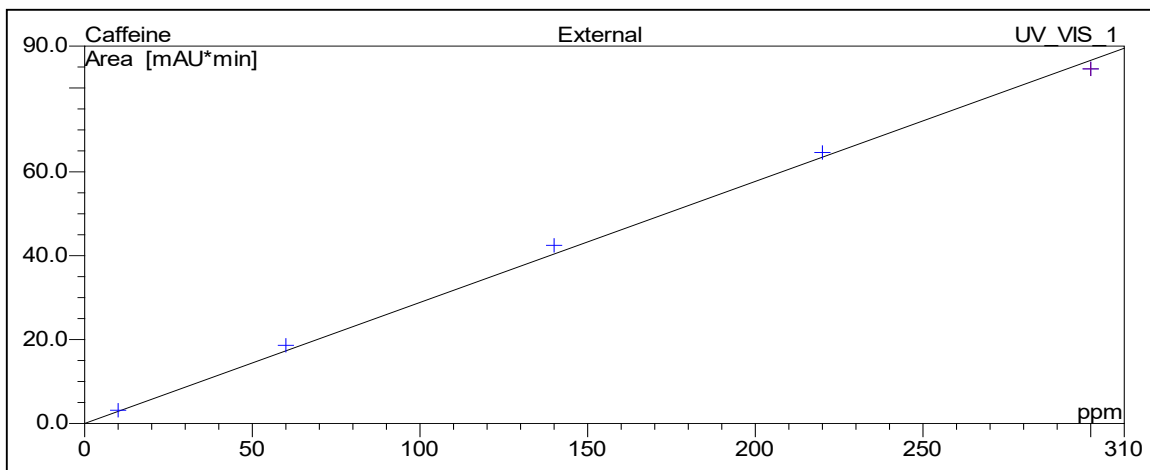
\_\_\_\_\_  
 Reviewer's signature // Date

\_\_\_\_\_  
 Operator's signature // Date

**• Data for Detector Linearity**

Sample Name	Amount ppm Caffeine UV_VIS_1	Area mAU*min Caffeine UV_VIS_1
Detector linearity_1	10,0	3,152
Detector linearity_2	60,0	18,630
Detector linearity_3	140,0	42,471
Detector linearity_4	220,0	64,620
Detector linearity_5	300,0	84,556

**• Calibration Curve**



Cal.Type UV_VIS_1	Number of Points UV_VIS_1	Offset UV_VIS_1	Slope UV_VIS_1
Lin	5	0,000	0,289

	Correlation Coefficient	RSD
	99,918 %	3,962 %
<b>Limit:</b>	<b>99,900 %</b>	<b>5,000 %</b>
<b>Result:</b>	<b>ok</b>	<b>ok</b>

\_\_\_\_\_  
Reviewer's signature // Date

\_\_\_\_\_  
Operator's signature // Date