



**Scheda tecnica indumento/Garment technical data sheet. 8245B.00**


Identificazione articolo/Item identification					
Cod. comm.le Industrial Starter/ IS commercial item code:	<b>8245B</b>	Cod. art. fornitore/ Supplier item code*:	<b>8245B</b>	Cod. fornitore/ Supplier code:	<b>101041</b>
Cod. colore Industrial Starter/ Industrial Starter colour code:	<b>013</b> (Giallo fluo-grigio/ Yellow fluo – grey)	[	Articolo del catalogo/Item from catalogue		
	<b>072</b> (Rosso fluo-grigio/ Red fluo-grey)	X ]			
		[	Articolo personalizzato/Customized item		
		]			
Nome articolo/Item name:	Codice cliente/Customer code: <b>N/A</b>				
	<b>Giubbino "HIVI STRETCH" / "HIVI STRETCH" jacket</b>				

Descrizione tecnica dell'articolo/Technical item description			
	Composizione/ Fabric composition	Colore/colour (Pantone)	Peso del tessuto/ Fabric weight [g/m <sup>2</sup> ]
Tessuto principale/ Shell main fabric:	<b>60% poliestere 35% cotone 5% spandex ripstop / 60% polyester 35% cotton 5% spandex ripstop</b>	<b>Giallo Fluo – Rosso Fluo / Yellow Fluo – Red Fluo /</b>	<b>270 +/- 5%</b>
Tessuto contrasto/ Contrast fabric:	<b>63% poliestere 34% cotone 3% spandex twill / 65% polyester 34% cotton 3% spandex twill</b>	<b>Grigio / Grey</b>	<b>260 +/- 5%</b>
Fodera tasche / Pocket lining :	<b>65% poliestere 35% cotone poplin / 65% polyester 35% cotton poplin</b>	<b>Bianco / White</b>	<b>110 +/- 5%</b>
Accessori/Accessories:	<b>bande riflettenti termosaldate, maniche staccabili, cinque tasche frontali, regolazione in vita con velcro, chiusura a zip coperta da patta, porta badge / heat-transfer reflective bands, detachable sleeves, five front pockets, waist adjustment with velcro, zipper closure with cover flap, badge holder</b>		
Loghi e ricami/ Logos & embroideries:			
Taglie/Sizes:	<b>S, M, L, XL, XXL, XXXL</b>		
Imballo/Packages:	<b>n. 1 pz per paper box – n. 10 paper box per cartone / n. 1 piece per paper box - n. 10 paper boxes per export carton</b>		
Istruzioni lavaggio/Care label:			

## Scheda tecnica indumento/Garment technical data sheet. 8245B.00



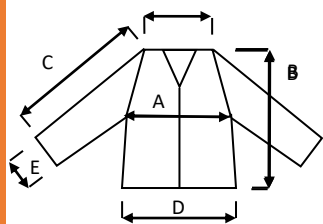
### Conformità alle norme CE/Conformity with EC standards

Cat.DPI / PPE Category:	II	Norme CE e livelli di protezione/ EC standards and protection levels:	<b>EN ISO 13688:2013</b> <b>EN 20471:2013+A1:2016 ( Class 2)</b>
Lingue nota Informativa/ Manufacturer's notes languages:	IT,ES,CZ,PL,EN,PT,SK,HU,FR,DE,LT,RS,GR,SI,LV,HR,EE,TR,RO		

### Misure delle taglie/ Size measurements [cm]

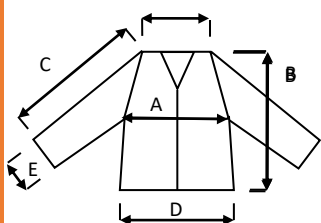
Taglia/Size:	S	M	L	XL	XXL	XXXL
A. Torace/Chest:	53,5	57,5	61,5	65,5	69,5	73,5
B. Lunghezza tot./Back lenght:	64	66	68	70	72	74
C. Manica/Sleeve:	79	83	86	89,5	92	94,5
D. Fondo/Bottom:	50	54	58	62	66	70
E. Polsino /Sleeve opening:	23	24	25	26	27	28

### Disegno e foto/Drawing and photo





Disegno e foto/Drawing and photo



Vicenza, 10/03/2020

Resp. acquisti/Purchasing manager