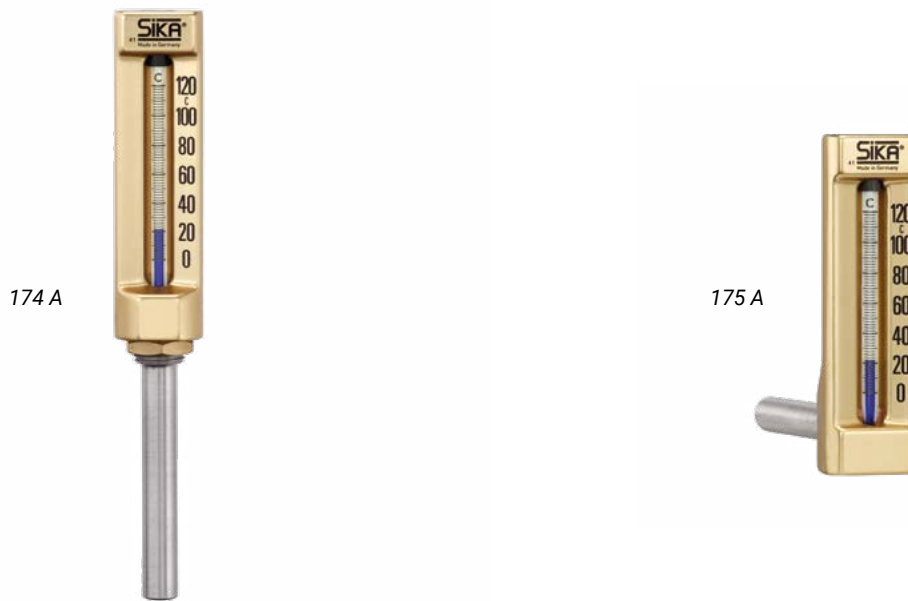


# Industrial thermometers type 174 A, 175 A

Weld-in immersion tube // Nominal size 110 // Aluminium anodized



## Highlights

- Accuracy according to DIN 16195
- No aging - no moving parts and no mechanical wear
- Lifetime warranty\*
- Completely without electrical auxiliary energy

## Technical data

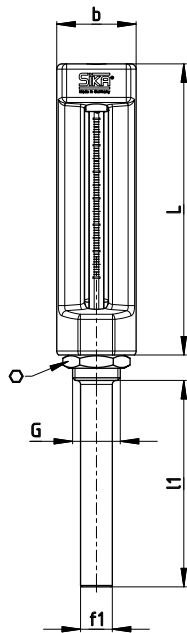
Type	174 A	175 A
Standard	DIN 16181 B, B1 and DIN 16182 S, S1	
Version	Straight	Angle 90°
Dimensions Housing	110 x 30 mm	
Measuring range according to DIN	Between 60...120 °C	
Error limits according to DIN 16195	2 °C	
Medium / Application	Liquid and gaseous media	
Immersion tube length	78, 115, 175 mm	
Immersion tube diameter	Ø 12 mm	
Process connection	Weld-in immersion tube	
Pressure rating**	PN 35	
Medium temperature	See selected measurement range	
Ambient temperature	-20...60 °C (only indoors)	
Storage temperature	-40...100 °C	

\* Except glass breakage and improper installation.

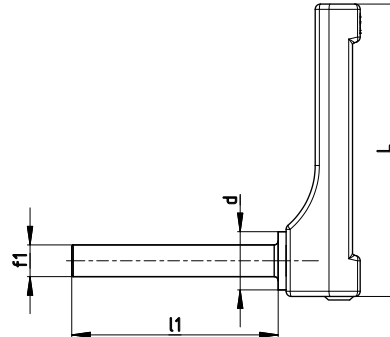
\*\* Non-binding guideline - For higher pressure loads, additional protection tubes have to be used.

# Technical drawings // Dimensions

Type 174 A



Type 175 A



## Dimensions [mm]

Type	L	f <sub>1</sub>	b	l <sub>1</sub>
174 A / 175 A	110	Ø 12	30	78 115 175

## Materials

Materials	
<b>Not in contact with media</b>	
<b>Housing</b>	Warm pressed aluminium part, gold anodized
<b>Thermometer capillary</b>	Prismatic capillary tube of solid glass, bar-shaped, diameter approx. Ø 6 mm, scale permanently burnt in
<b>Thermometer filling</b> → Blue	Petroleum
<b>In contact with media</b>	
<b>Process connection</b>	see immersion tube material
<b>Immersion tube material</b> → Standard	steel, welded

# Article numbers

Order code									
<b>Version</b>									
Straight	174								
Angle 90 °	175								
<b>Immersion tube type</b>									
Type A - plain immersion tube	1								
<b>Display ranges</b>									
0...120 °C			12						
0...160 °C			16						
<b>Scale</b>									
Celsius °C				1					
<b>Thermometer filling</b>									
Blue					1				
<b>Immersion tube length (L)</b>									
78 mm							078		
115 mm							115		
175 mm							175		
<b>Process connection</b>									
Weld-in immersion tube								0	
<b>Immersion tube material</b>									
Steel									2
<b>Example order number</b>	<b>174</b>	<b>1</b>	<b>12</b>	<b>1</b>	<b>1</b>	<b>1</b>	<b>078</b>	<b>0</b>	<b>2</b>

# Accessories

Accessories	Article number
<p><b>Measuring point designation</b></p> <p>Laser-inscribed stainless steel plate with fixing wire for easy attachment to measuring points</p> <p>→ <b>Scope of delivery:</b> Designation plate inscribed according to specification and enclosed fixing wire (sealing wire)</p> <p>→ <b>Fastening:</b> Wire (included in delivery), alternatively sealing, cable ties or similar (not included in delivery)</p> <p>→ <b>Materials:</b> Plate stainless steel 1.4571, wire stainless steel</p> <p>→ <b>Dimensions:</b> Plate 55 x 10 x 0.8 mm, wire length 180 mm</p> <p>→ <b>Inscription:</b> one-sided, single-line, max. 11 characters, character height 5 mm, designation width max. 40 mm, letters, numbers, symbols, barcodes, QR codes</p> <p>→ <b>Transmission of designations:</b> digital list, file formats Excel, Word or CSV</p>	<p><b>ONSITETAG</b></p>
