

CORMACH

180000 E

Quality Management
ISO 9001:2008

► Voluntary participation
in regular monitoring.



www.cormach.com

CORMAGH

180000E





... ABOUT ANCIENT



KRANKAMON, PHAROAH OF EGYPT, DREAMED ABOUT HIS PYRAMID, THAT IN HIS INTENT, SHOULD BECOME THE BIGGEST EVER BUILD.

"Phew! What hard work. Is it possible that anybody can think of a better pushing system?"



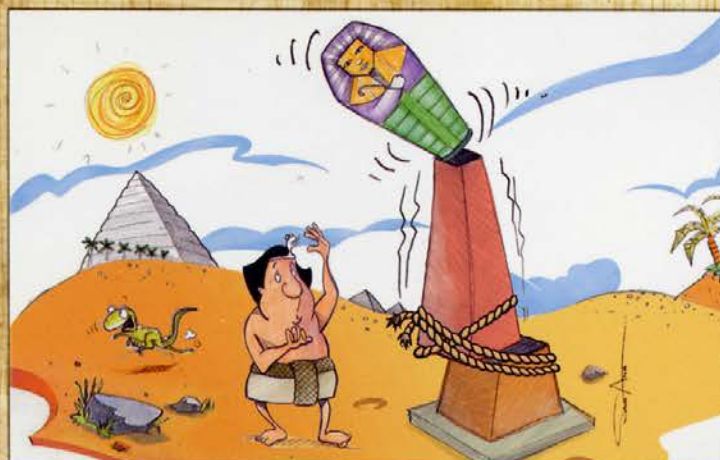
THE BUILDING PROCESS WAS SLOW BEING HIS RESOURCES LIMITED TO SLAVES AND MATERIAL.

"But, why is it such hard work using only one support?"



THE PHAROAH LIVED A SHORT AND HARD LIFE AND THE KRANKAMON PYRAMIDS REMAINED A DREAM.

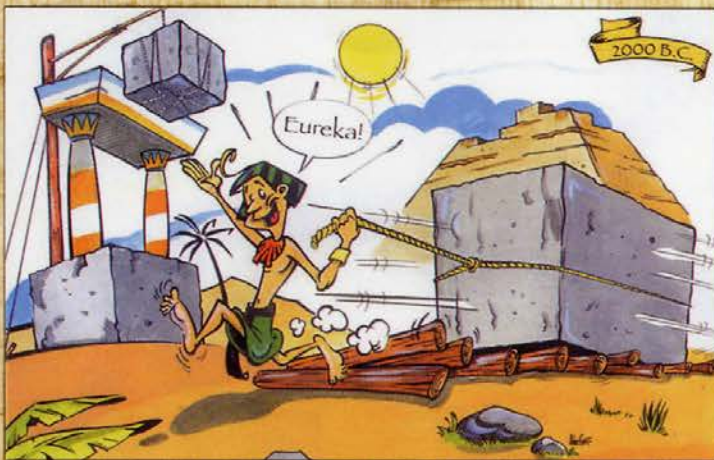
"There is something illogical in this system. The offset boom unbalances the structure."



LATER THE PHAROAH DECIDED TO BUILD AN OBELISK WITH HIS IMAGE ON TOP.


Why is the structure so weak? It cannot carry the weight of my statue!

EGYPT MANUSCRIPTS



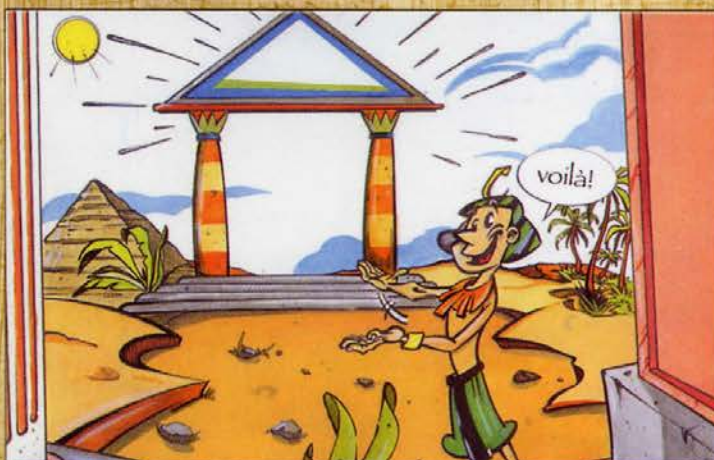
PHARAOH CORMSES, YEARS LATER, DREAMED THE SAME DREAM, OF THE BIGGEST PYRAMID BEING HIS OWN.

"Here is the solution: Cormach system whit roller bearing faster and more efficient."




BEING OLD HE DECIDED TO FINISH KRANKAMON WORK, BUT THE NEEDED SOMETHING TO SPEED THE WORK UP.

"Here is the solution: Cormach system whit double mast and double lifting cylinders."

CORMSES DREAM CAME THROUGH AND HIS PYRAMID WILL STAND FOR EVER.

"Here is the solution: Cormach boom in central position makes the structure more balanced. Excellent."




"MANY YEARS LATER CORMSES BUILT HIS OBELISK WITH HIS STATUE ON FOR ALL THE PEOPLE TO SEE HIS IMAGE FOR YEARS TO COME."

"Amazing!! the balanced structure can support a much heavier load!!"




END

180000E



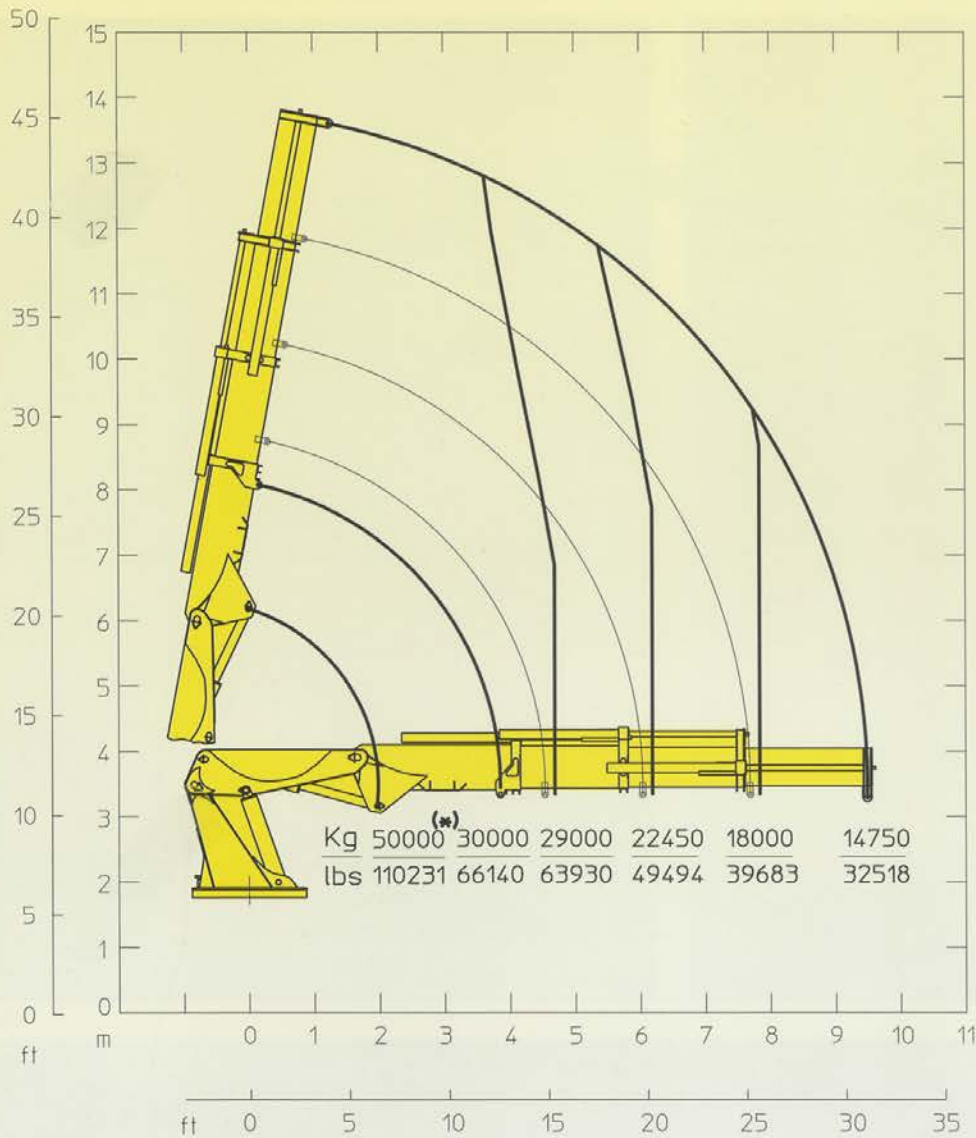


180000E



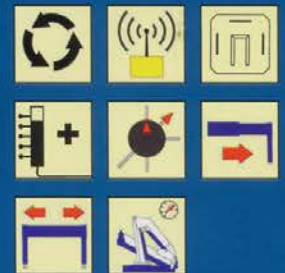


180000 E3

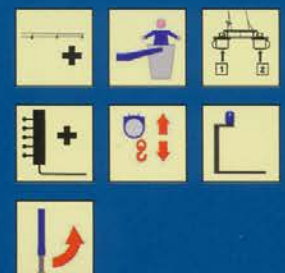


E3	E3	
171000 daN*m	1,237,082 Lb*ft	Momento statico massimo al perno torretta • Max. static moment at the turret pin Moment statique max. a l'axe de la tourelle • Max. statisches ubmoment am kranseulenbolzen
9.48 m	31'1"	Sbraccio idraulico • Hydraulic boom length Longueur du bras hydraulique • Hydraulic reichweite
		Sbraccio con prolunghe manuali • Boom length with manual extensions Longueur du bras avec rallonges manuelles
11000 daN*m	79,578 Lb*ft	Coppia di rotazione • Slew torque • Moment de rotation • Drehmoment
90 sec 360°	90 sec 360°	Tempo di rotazione • Slewing speed • Temp de rotation • Schwenkgeschwindigkeit
4,92+4,92 m	16'2"+16'2"	Uscita stabilizzatori (*) • Outriggers extensions (*) Sortie des bequilles (*) • Breite der abstützung (*)
12107 m	39'9"	Larghezza stabilizzatori (**) • Outriggers width (**) Largeur des bequilles (**) • Breite der abstützung (**)
3485 mm	11'5"	Lunghezza • Length • Longeur • Länge
2458 mm	8'1"	Larghezza • Width • Largeur • Breite
2710 mm	8'11"	Altezza • Height • Hauteur • Höhe
16310 kg	35,9+57 lbs	Peso (senza olio e montaggio) • Weight (without oil and fitting) Poids (sans huile et montage) • Gewicht (ohne öl und ohne)
115 l/min	30 us gal/min	Portata pompa (***) • Pump delivery (***) • Capacité de la pompe (***) • Pumpenheistung (***)
300 bar	4266 psi	Pressione • Pressure • Pression • Druck
450 l	119 us gal	Capacità serbatoio olio • Oil tank capacity • Capacité de reservoir d'huile • Öl tank inhalt

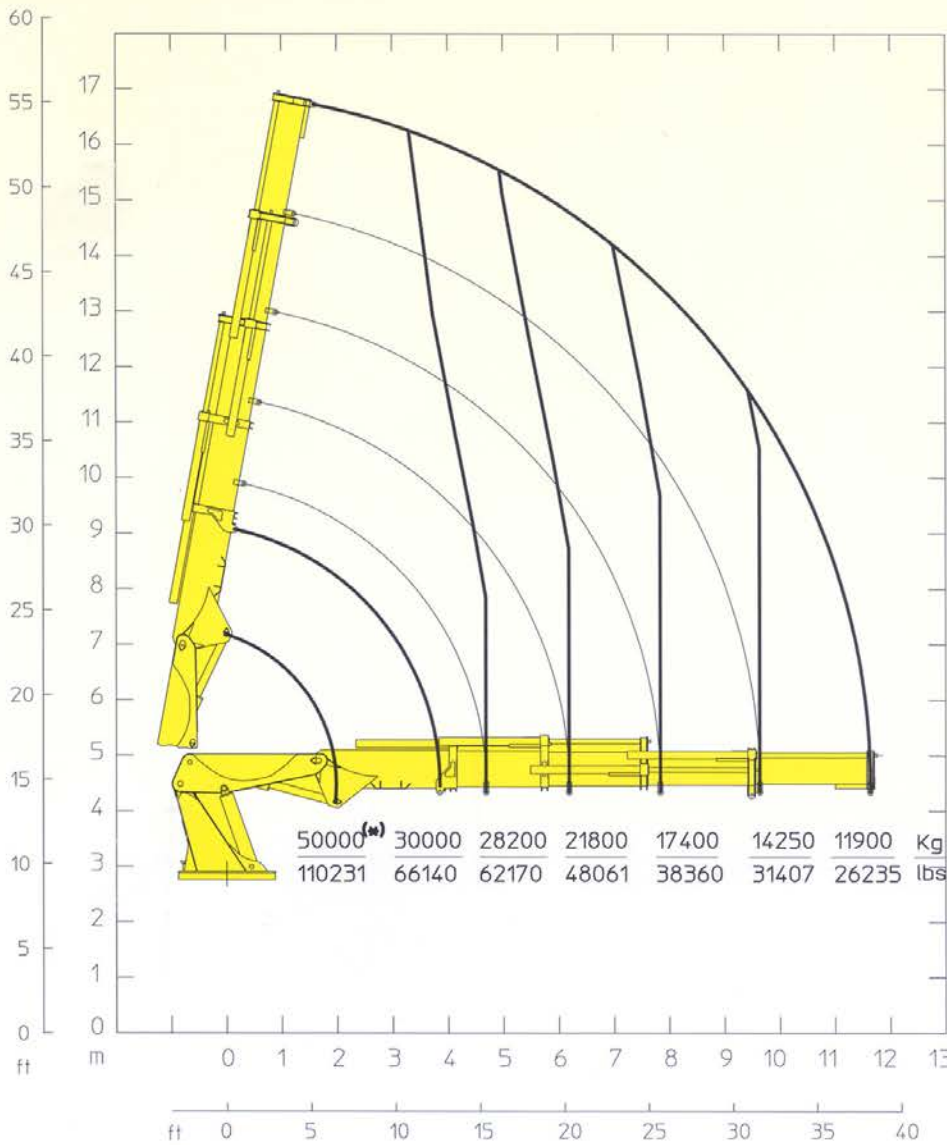
STANDARD



OPTIONAL



180000 E4

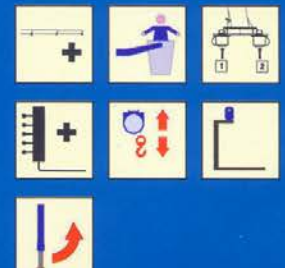


E4	E4	
171000 daN*m	1,237,082 Lb*ft	Momento statico massimo al perno torretta • Max. static moment at the turret pin Moment statique max. a l'axe de la tourelle • Max. statisches ubmoment am kransaulenbolzen
11.63 m	38'2"	Sbraccio idraulico • Hydraulic boom length Longueur du bras hydraulique • Hydraulic reichweite
		Sbraccio con prolunghe manuali • Boom length with manual extensions Longueur du bras avec rallonges manuelles
11000 daN*m	79,578 Lb*ft	Coppia di rotazione • Slew torque • Moment de rotation • Drehmoment
90 sec 360°	90 sec 360°	Tempo di rotazione • Slewing speed • Temp de rotation • Schwenkgeschwindigkeit
4,92+4,92 m	16'2"+16'2"	Uscita stabilizzatori (*) • Outriggers extensions (*) Sortie des bequilles (*) • Breite der abstützung (*)
12107 m	39'9"	Larghezza stabilizzatori (***) • Outriggers width (***) Largeur des bequilles (***) • Breite der abstützung (***)
3485 mm	11'5"	Lunghezza • Length • Longeur • Länge
2458 mm	8'1"	Larghezza • Width • Largeur • Breite
2710 mm	8'11"	Altezza • Height • Huteur • Höhe
16840 kg	37,126 lbs	Peso (senza olio e montaggio) • Weight (without oil and fitting) Poids (sans huile et montage) • Gewicht (ohne öl und ohne)
115 l/min	30 us gal/min	Portata pompa (****) • Pump delivery (****) • Capacité de la pompe (****) • Pumpenleistung (****)
300 bar	4266 psi	Pressione • Pressure • Pression • Druck
450 l	119 us gal	Capacità serbatoio olio • Oil tank capacity • Capacité de reservoir d'huile • Öl tank inhalt

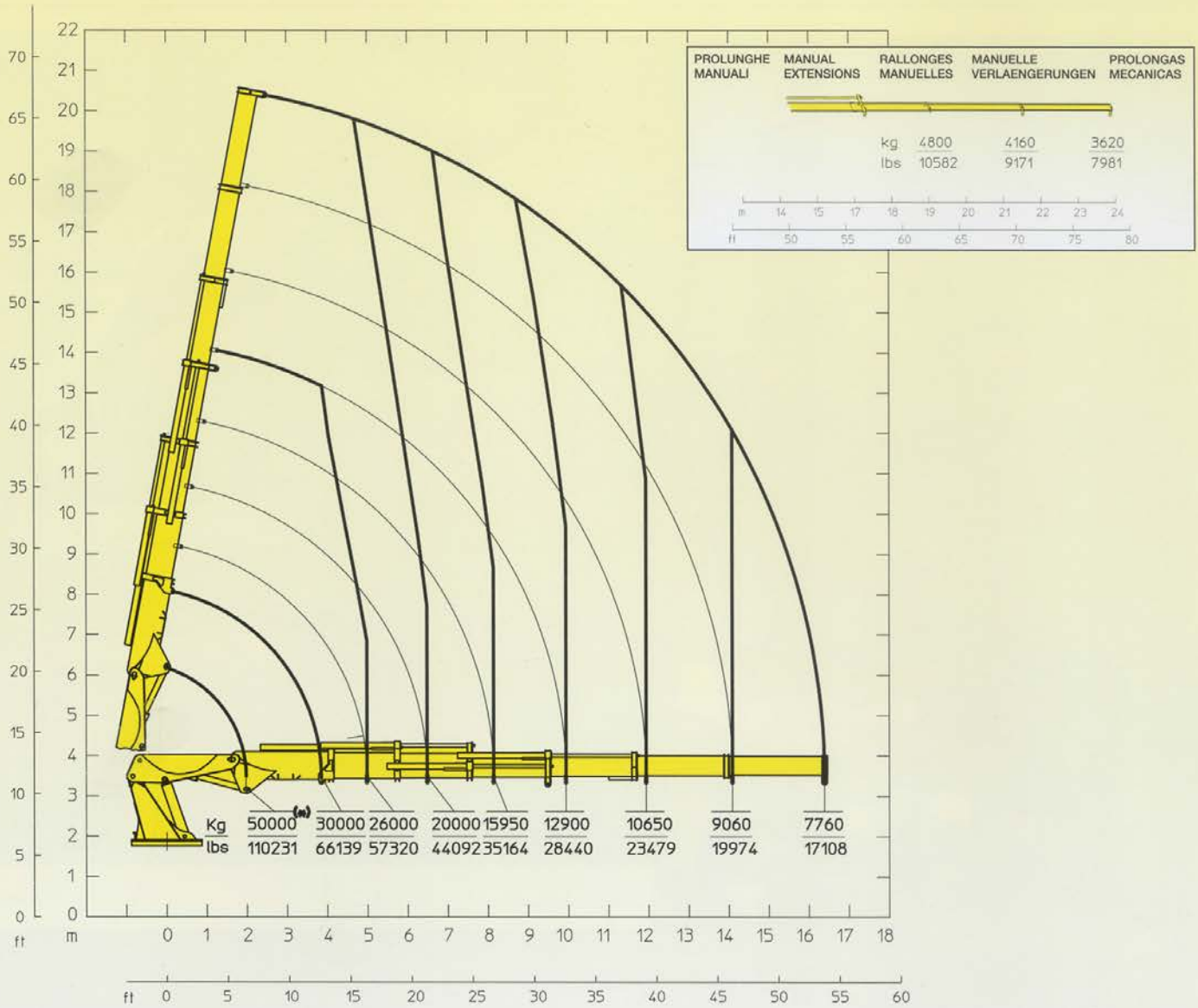
STANDARD



OPTIONAL

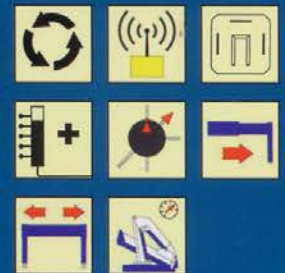


180000 E6

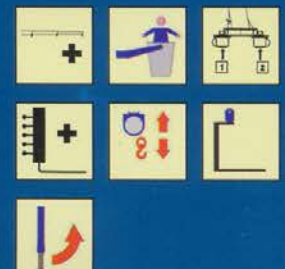


E6	E6	
171000 daN*m	1,237,082 Lb*ft	Momento statico massimo al perno torretta • Max. static moment at the turret pin Moment statique max. a l'axe de la tourelle • Max. statisches ubmoment am kranraubenbolzen
16.38 m	53'9"	Sbraccio idraulico • Hydraulic boom length Longueur du bras hydraulique • Hydraulic reichweite
		Sbraccio con prolunghe manuali • Boom length with manual extensions Longueur du bras avec rallonges manuelles
11000 daN*m	79,578 Lb*ft	Coppia di rotazione • Slew torque • Moment de rotation • Drehmoment
90 sec 360°	90 sec 360°	Tempo di rotazione • Slewing speed • Temp de rotation • Schwenkgeschwindigkeit
4,92+4,92 m	16'2"+16'2"	Uscita stabilizzatori (*) • Outriggers extensions (*) Sortie des bequilles (*) • Breite der abstützung (*)
12107 m	39'9"	Larghezza stabilizzatori (**) • Outriggers width (**) Largeur des bequilles (**) • Breite der abstützung (**)
3485 mm	11'5"	Lunghezza • Length • Longeur • Länge
2458 mm	8'1"	Larghezza • Width • Largeur • Breite
2710 mm	8'11"	Altezza • Height • Huteur • Höhe
17750 kg	39,132 lbs	Peso (senza olio e montaggio) • Weight (without oil and fitting) Poids (sans huile et montage) • Gewicht (ohne öl und ohne)
115 l/min	30 us gal/min	Portata pompa (****) • Pump delivery (****) • Capacité de la pompe (****) • Pumpenleistung (****)
300 bar	4266 psi	Pressione • Pressure • Pression • Druck
450 l	119 us gal	Capacità serbatoio olio • Oil tank capacity • Capacité de reservoir d'huile • Öl tank inhalt

STANDARD

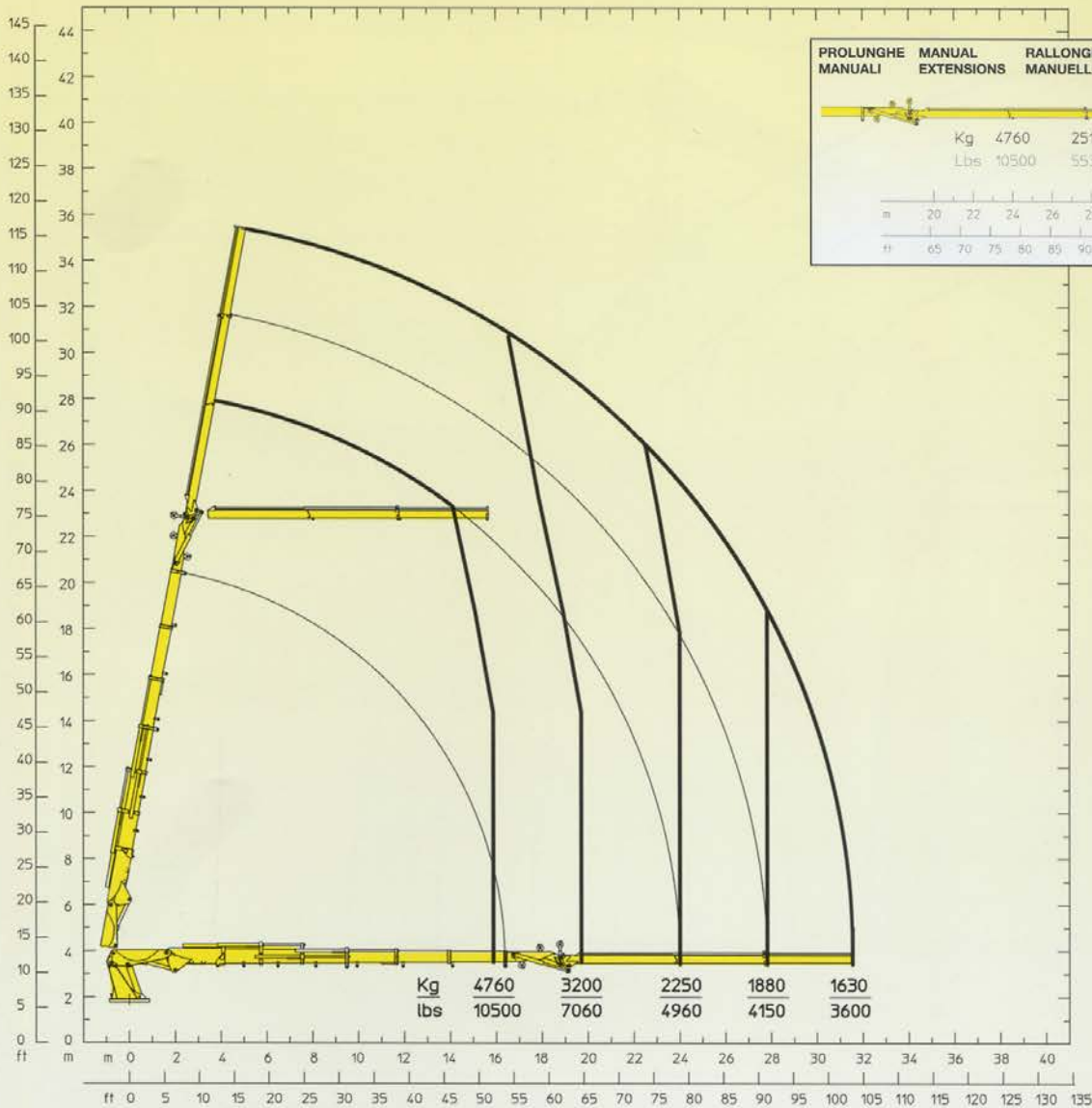


OPTIONAL



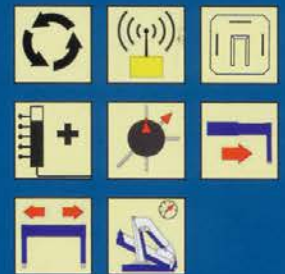
180000 E6JIB

GORMAGH

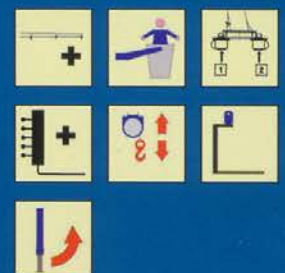


E6JIB	E6JIB	
171000 daN*m	1,237,082 Lb*ft	Momento statico massimo al perno torretta • Max. static moment at the turret pin Moment statique max. a l'axe de la tourelle • Max. statisches ubmoment am kransaulenbolzen
31.61 m	38'2"	Sbraccio idraulico • Hydraulic boom length Longueur du bras hydraulique • Hydraulic reichweite
39,91 m	130'11"	Sbraccio con prolunghe manuali • Boom length with manual extensions Longueur du bras avec rallonges manuelles
11000 daN*m	79,578 Lb*ft	Coppia di rotazione • Slew torque • Moment de rotation • Drehmoment
90 sec 360°	90 sec 360°	Tempo di rotazione • Slewing speed • Temp de rotation • Schwenkgeschwindigkeit
4,92+4,92 m	16'2"+16'2"	Uscita stabilizzatori (*) • Outriggers extensions (*) Sortie des bequilles (*) • Breite der abstützung (*)
12107 m	39'9"	Larghezza stabilizzatori (***) • Outriggers width (***) Largeur des bequilles (***) • Breite der abstützung (***)
		Lunghezza • Length • Longueur • Länge
		Larghezza • Width • Largeur • Breite
		Altezza • Height • Hauteur • Höhe
19790 kg	43,629 lbs	Peso (senza olio e montaggio) • Weight (without oil and fitting) Poids (sans huile et montage) • Gewicht (ohne öl und ohne)
115 l/min	30 us gal/min	Portata pompa (***) • Pump delivery (***) • Capacité de la pompe (***) • Pumpenleistung (***)
300 bar	4266 psi	Pressione • Pressure • Pression • Druck
450 l	119 us gal	Capacità serbatoio olio • Oil tank capacity • Capacité de reservoir d'huile • Öl tank inhalt

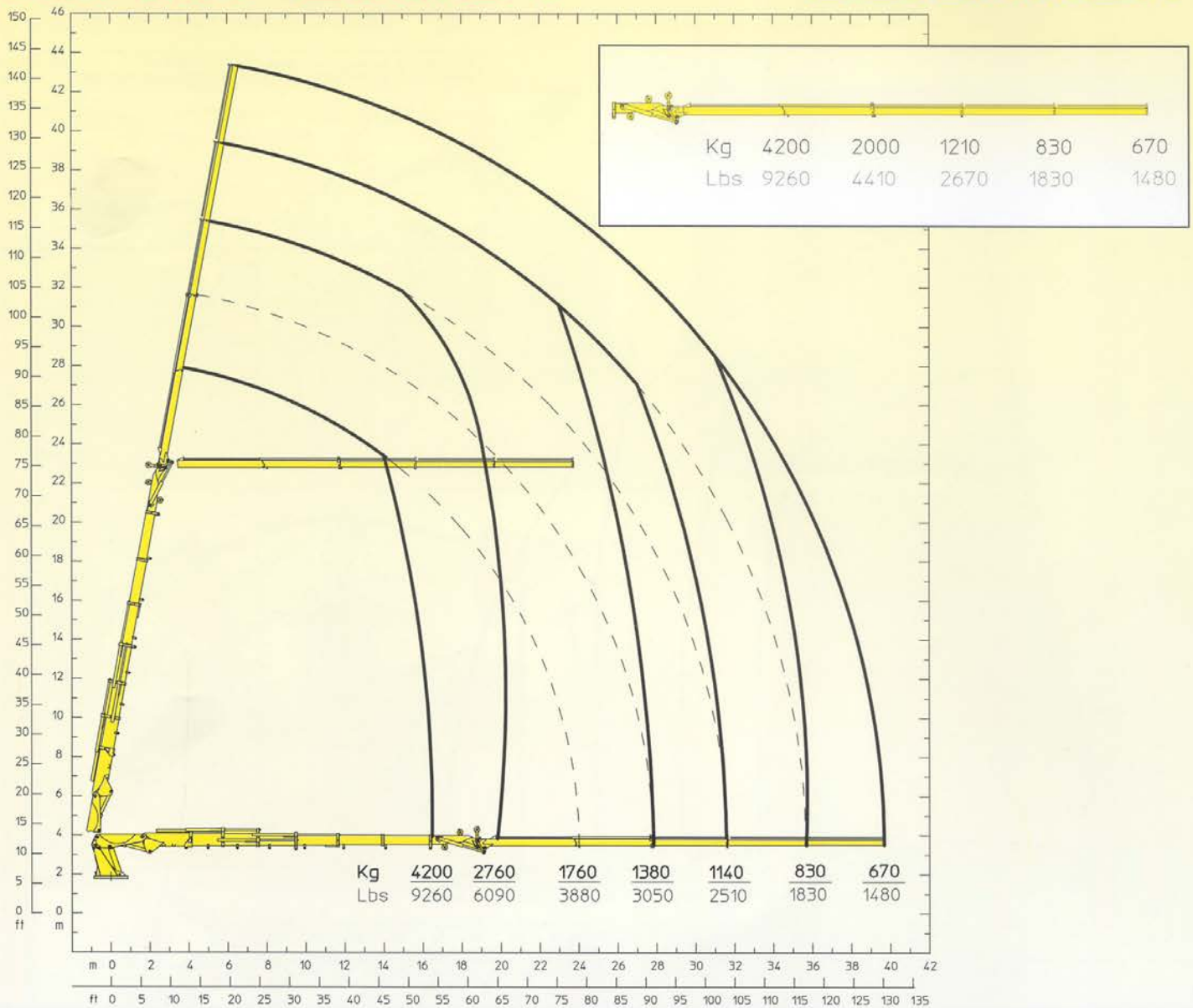
STANDARD



OPTIONAL



180000 E6JIB4

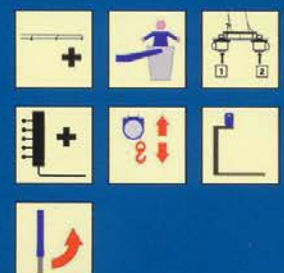


E6JIB4	E6JIB4	
171000 daN*m	1,237,082 Lb*ft	Momento statico massimo al perno torretta • Max. static moment at the turret pin Moment statique max. a l'axe de la tourelle • Max. statisches ubmoment am kransaulenbolzen
39.56 m	38'2"	Sbraccio idraulico • Hydraulic boom length Longueur du bras hydraulique • Hydraulic reichweite
		Sbraccio con prolunghe manuali • Boom length with manual extensions Longueur du bras avec rallonges manuelles
11000 daN*m	79,578 Lb*ft	Coppia di rotazione • Slew torque • Moment de rotation • Drehmoment
90 sec 360°	90 sec 360°	Tempo di rotazione • Slewing speed • Temp de rotation • Schwenkgeschwindigkeit
4,92+4,92 m	16'2"+16'2"	Uscita stabilizzatori (*) • Outriggers extensions (*) Sortie des bequilles (*) • Breite der abstützung (*)
12107 m	39'9"	Larghezza stabilizzatori (**) • Outriggers width (**) Largeur des bequilles (**) • Breite der abstützung (**)
		Lunghezza • Length • Longeur • Länge
		Larghezza • Width • Largeur • Breite
		Altezza • Height • Huteur • Höhe
20230 kg	44,600 lbs	Peso (senza olio e montaggio) • Weight (without oil and fitting) Poids (sans huile et montage) • Gewicht (ohne öl und ohne)
115 l/min	30 us gal/min	Portata pompa (***) • Pump delivery (***) • Capacité de la pompe (***) • Pumpenleistung (***)
300 bar	4266 psi	Pressione • Pressure • Pression • Druck
450 l	119 us gal	Capacità serbatoio olio • Oil tank capacity • Capacité de reservoir d'huile • Öl tank inhalt

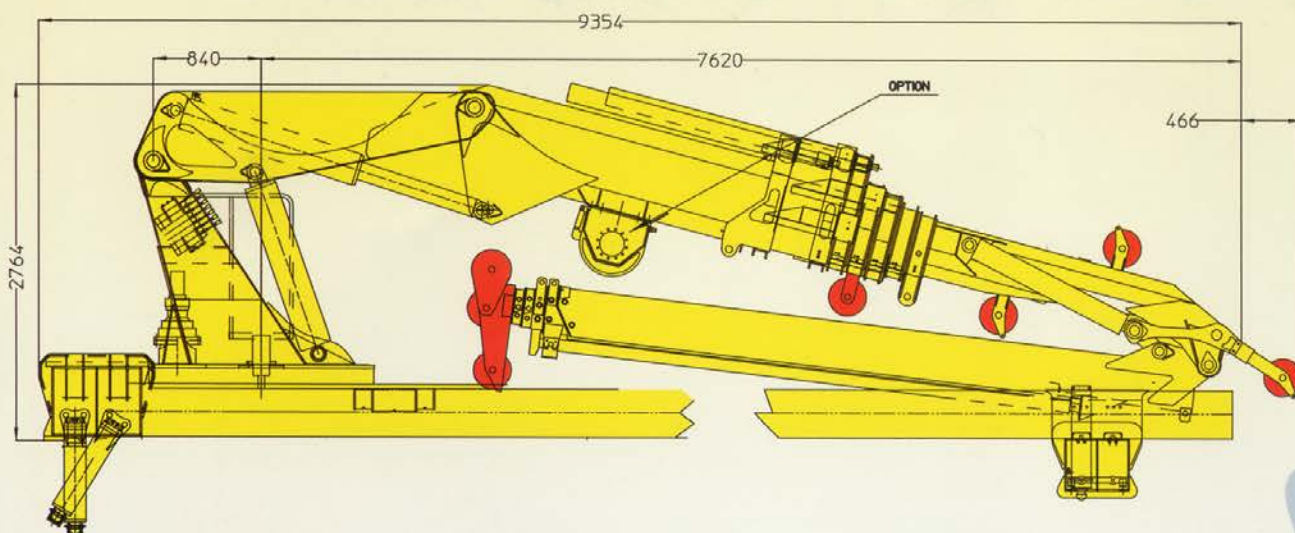
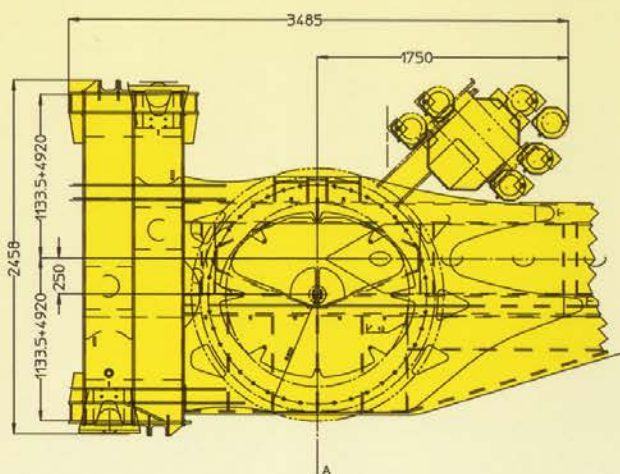
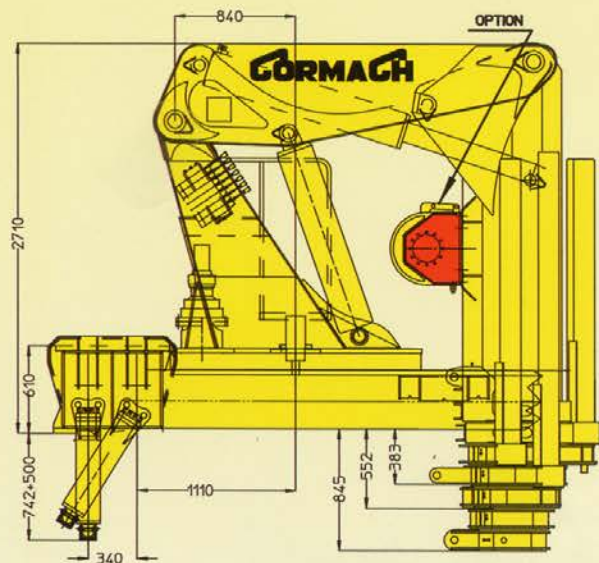
STANDARD



OPTIONAL



180000 E



STANDARD



Rotazione continua
Continuous rotation
Rotation continue
Endlos schwenkwerk



Radiocomando
Radio remote control
Radiocommandes
Funkfernsteuerung



Piastre maggiorate
Large ground plates
Plaques stabilisateurs
Bodenplatten



Comando supplementare non attivato
Additional free section not activated
Section du distributeur pas activée
Zusätzlicher steuerschieber



Pompa a portata variabile
Pump with load sensing
Pompe à débit variable
Verstellpumpe load sensing



Stabilizzatori gru base estendibili idraulicamente
Outriggers with hydraulic extension
Stabilisateurs avec élargissement hydraulique
Hydraulisch Ausfahrbare stützen



Traversa ausiliaria estendibile
Additional outriggers with lateral extension
Stabilisateurs supplémentaires avec élargissement
Ausfahrbare zusätz-stützen



Limitatore di momento
Load limiting device
Limiteur de charge
Überlastabschaltung

OPTIONAL



Prolunghe meccaniche
Manual extensions
Rallonges manuelles
Manuelle verlängerungen



Cestello
Basket
Nacelle
Personenkorb



Doppio gruppo di rotazione
Double rotation group
Groupe de rotation double
Doppelte drehgruppe



Stabilizzatori gru base girevoli
Tilt up outriggers
Bequilles tournants
Drehbare stützen



Comando supplementare attivato
Additional function
section du distributeur activée
Zusatzfunktion



Vercello
Winch
Treuil
Seilwinde



Utilizzo con attrezzo
Additional accessories
Utilisation avec accessoire
Zubehör

GORMACH



CORMACH

Cormach s.r.l. - Via Madonnina, 27 - C.P. 199 - 25018 MONTICHIARI (BS) - ITALY
Tel. 0039.030.9656811 - Telefax 0039.030.9656846.7.8
E-mail: info@cormach.com - www.cormach.com

A fronte di una continua ricerca tecnologica i dati possono cambiare senza preavviso. Contattare il nostro Ufficio Commerciale per ulteriori informazioni.
Because of continuous technology research data can change without notice. Please, contact our Commercial Dept. for further information.
A cause de une continue recherche technologique les données peuvent changer sans préavis. Contacter notre Bureau Commercial pour des autres informations.
Irrtum und technische Änderung vorbehalten mause und gewichte unverbindlich. Unser Vertrieb erteilt Ihnen gerne weitere Auskünfte. Bitte rufen Sie uns an.
Debto a los continuos avances tecnologicos los datos pueden variar sin notificación previa. Para más información rogamos contacten nuestro Departamento Comercial.