

Power Supplies

80 Plus PS/2 Single Power Supplies



Part Number	PS8-250ATX-ZE	PS8-300ATX-ZBE	PS8-400ATX-ZE	PS8-500ATX-ZE	PS8-700ATX-ZE
Form Factor	PS/2	PS/2	PS/2	PS/2	PS/2
Wattage	250w	300W	400W	500W	700W
80 Plus Grade	Bronze	Bronze	Bronze	Bronze	Bronze
Input Range	90 ~ 264 V _{AC}	100 ~ 127V _{AC} , 200 ~ 240 V _{AC}	90 ~ 264 V _{AC}	90 ~ 264 V _{AC}	90 ~ 264 V _{AC}
Output Range	+3.3V @ 20 A +5 V @ 21 A +12 V1 @ 16 A +12 V2 @ 16 A -12 V @ 0.3 A -5 V @ 0.3A +5 Vsb @ 2.5 A	+3.3V @ 11.12 A +5 V @ 13.2 A +12 V @ 7.64 A +12 VCPU @ 8 A -12 V @ 0.1 A -5V @ 0.05 A +5 Vsb @ 1.39 A	+3.3V @ 21 A +5 V @ 20 A +12 V1 @ 16 A +12 V2 @ 16 A -12 V @ 0.5 A -5V @ 0.3 A +5 Vsb @ 3 A	+3.3V @ 24 A +5 V @ 20 A +12 V1 @ 16 A +12 V2 @ 16 A -12 V @ 0.5 A -5V @ 0.3 A +5 Vsb @ 3 A	+3.3V @ 24 A +5 V @ 30 A +12 V1 @ 16 A +12 V2 @ 16 A +12 V3 @ 16 A +12 V4 @ 16 A -12 V @ 0.5 A -5V @ 0.5 A +5 Vsb @ 4 A
MTBF(hrs)	100,000 @ 25° C	100,000 @ 25° C	100,000 @ 25° C	100,000 @ 25° C	100,000 @ 25° C
Dimensions (W x H x D)	150 x 86 x 140 mm	150 x 86 x 140 mm	150 x 86 x 140 mm	150 x 86 x 140 mm	150 x 86 x 140 mm
Safety	CE, FCC, UL, CB, TUV, CCC, KCC	CE, FCC, UL, CB, TUV, CCC, KCC, BSMI	CE, FCC, UL, CB, TUV, CCC, KCC	CE, FCC, UL, CB, TUV, CCC, KCC	CE, FCC, UL, CB, TUV, CCC, KCC
Compatible Chassis	ACP-2000/IPC-602, ACP-4000, ACP-4010, ACP-4020, ACP-4320, ACP-4340, ACP-4360 IPC-6606, IPC-6608, IPC-5122, IPC-7130, IPC-7130L, IPC-6908, IPC-7132, IPC-7220, IPC-510, IPC-610-F, IPC-610-H, IPC-610-L, IPC-611, IPC-619	ACP-2000/IPC-602, ACP-4000, ACP-4010, ACP-4020, ACP-4320, ACP-4340, ACP-4360 IPC-6606, IPC-6608, IPC-5122, IPC-7130, IPC-7130L, IPC-6908, IPC-7132, IPC-7220, IPC-510, IPC-610-F, IPC-610-H, IPC-610-L, IPC-611, IPC-619	ACP-2000/IPC-602, ACP-4000, ACP-4010, ACP-4020, ACP-4320, ACP-4340, ACP-4360 IPC-6606, IPC-6608, IPC-5122, IPC-7130, IPC-7130L, IPC-6908, IPC-7132, IPC-7220, IPC-510, IPC-610-F, IPC-610-H, IPC-610-L, IPC-611, IPC-619, HPC-7442	ACP-2000/IPC-602, ACP-4000, ACP-4010, ACP-4020, ACP-4320, ACP-4340, ACP-4360 IPC-6606, IPC-6608, IPC-5122, IPC-7130, IPC-7130L, IPC-6908, IPC-7132, IPC-7220, IPC-510, IPC-610-F, IPC-610-H, IPC-610-L, IPC-611, IPC-619, HPC-7442	ACP-2000/IPC-602, ACP-4000, ACP-4010, ACP-4020, ACP-4320, ACP-4340, ACP-4360, IPC-510, IPC-610-F, IPC-610-H, IPC-610-L, HPC-7442

PS/2 DC Power Supplies



Model Name	PS-300ATX-DC48E
Wattage	300W
Input Range	72 ~ 36 V _{DC} , 15 A
Outputs	+5 V @ 30 A (0.3 A min) +3.3 V @ 28 A (0.3 A min) +12 V @ 15 A (0.2 A min) -12 V @ 0.8 A, -5 V @ 0.3 A, +5 Vsb @ 2 A
MTBF (hrs)	100,000 @ 25C
Dimensions (H x W x D)	86 x 150 x 140 mm (3.39" x 5.91" x 5.51")
Safety	UL, TUV, CB, CCC
Compatible Chassis	ACP-2000, ACP-4000, ACP-4010, ACP-4020, ACP-4320, ACP-4340, ACP-4360, IPC-602, IPC-610

80 Plus 1U/2U Single Power Supplies



Part Number	PS8-500U2-XE	96PS-A700W1U
Form Factor	2U	1U
Wattage	500W	700W
80 Plus Grade	Bronze	Bronze
Input Range	90 ~ 264 V _{AC}	90 ~ 264 V _{AC}
Output Range	+3.3V @ 20 A, +5 V @ 20 A +12 V1 @ 16 A, +12 V1 @ 16 A +12 V3 @ 16 A, -12 V @ 0.5A +5 Vsb @ 3 A	+3.3V @ 24 A, +5 V @ 30 A +12 V1 @ 16 A, +12 V2 @ 16 A +12 V3 @ 16 A, +12 V4 @ 16 A -12V @ 0.5 A, +5 Vsb @ 4 A
MTBF(hrs)	100,000 @ 25° C	100,000 @ 25° C
Dimensions (W x H x D)	70 x 100 x 240 mm	40 x 100 x 250 mm
Safety	CE, FCC, UL, CB, TUV, CCC, KCC	CE, FCC, UL, CB, TUV, CCC, KCC
Compatible Chassis	HPC-7242, HPC-7282, HPC-7320, HPC-8316	HPC-7320, HPC-7400, HPC-8316

80 Plus Flex ATX Power Supplies



Part Number	PS8-250FATX-XE	PS8-350FATX-XE	96PS-A400WFX-1
Form Factor	Flex ATX	Flex ATX	Flex ATX
Wattage	250W	350W	400W
80 Plus Grade	Bronze	Bronze	Gold
Input Range	90 ~ 264 V _{AC}	90 ~ 264 V _{AC}	90 ~ 264 V _{AC}
Output Range	+3.3V @ 12 A +5 V @ 14 A +12 V @ 18 A -12 V @ 0.3 A +5 Vsb @ 2.5 A	+3.3V @ 16A +5 V @ 16 A +12 V1 @ 18 A +12 V2 @ 18 A -12 V @ 0.3A +5 Vsb @ 3 A	+3.3V @ 16 A +5 V @ 16 A +12 V1 @ 18 A +12 V2 @ 18 A -12 V @ 0.5 A -5 V @ 0.2 A +5 Vsb @ 3 A
MTBF(hrs)	100,000 @ 25° C	100,000 @ 25° C	100,000 @ 25° C
Dimensions (W x H x D)	81.5 x 40.5 x 150 mm	81.5 x 40.5 x 150 mm	81.5 x 40.5 x 190 mm
Safety	CE, FCC, UL, CB, TUV, CCC, KCC	CE, FCC, UL, CB, TUV, CCC, KCC, BSMI	CE, FCC, UL, CB, TUV, CCC, KCC
Compatible Chassis	ACP-1010/ACP-1320, ACP-2010/ACP-2320, ACP-4D00, IPC-120, IPC-3012, IPC-6806S, IPC-6806S-D, IPC-6806, IPC-5120, IPC-7120	ACP-1010/ACP-1320, ACP-2010/ACP-2320, ACP-4D00, IPC-120, IPC-603, IPC-3012, IPC-6806S, IPC-6806S-D, IPC-6806, IPC-5120, IPC-7120	ACP-1010/ACP-1320, ACP-2010/ACP-2320

Power Supplies

80 Plus Redundant Power Supplies



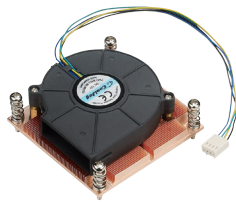
Part Number	RPS8-350ATX-XE	RPS8-500ATX-XE	RPS8-750ATX-XE	RPS8-500U2-XE	RPS8-700U2-XE
Form Factor	Mini Redundant	Mini Redundant	Mini Redundant	2U Redundant	2U Redundant
Wattage	350W 1+1	500W 1+1	750W 1+1	500W 1+1	700W 1+1
80 Plus Grade	Gold	Gold	Gold	Bronze	Gold
PMBus	Ver. 1.2	Ver. 1.2	Ver. 1.2	-	Ver. 1.2
Input Range	90 ~ 264 V _{AC}	90 ~ 264 V _{AC}	90 ~ 264 V _{AC}	90 ~ 264 V _{AC}	90 ~ 264 V _{AC}
Output Range	+3.3V @ 20 A +5 V @ 20 A +12 V1 @ 29 A -5 V @ 0.3 A -12 V @ 0.5 A +5 Vsb @ 2 A	+3.3V @ 20 A +5 V @ 20 A +12 V1 @ 16 A +12 V2 @ 16A +12 V3 @ 16A -5 V @ 0.3 A -12 V @ 0.5 A +5 Vsb @ 3 A	+3.3V @ 24 A +5 V @ 30 A +12 V @ 60.9 A -12 V @ 0.5 A +5 Vsb @ 4 A	+3.3V @ 20 A +5 V @ 25 A +12 V @ 40.2 A -12 V @ 0.5 A +5 Vsb @ 3.52 A	+3.3V @ 25 A +5 V @ 25 A +12 V @ 57 A -12 V @ 0.3 A +5 Vsb @ 4.5 A
MTBF(hrs)	100,000 @ 25° C	100,000 @ 25° C	100,000 @ 25° C	100,000 @ 25° C	100,000 @ 25° C
Dimensions (W x H x D)	150 x 84 x 190 mm	150 x 84 x 190 mm	150 x 84 x 200 mm	85 x 86.6 x 217 mm	75.6 x 83.8 x 250 mm
PMBUS	1.2	1.2	1.2	NA	1.2
Safety	CE , FCC, UL , CB, TUV, CCC, KCC	CE , FCC, UL , CB, TUV, CCC, KCC	CE , FCC, UL , CB, TUV, CCC, KCC	CE , FCC, UL , CB, TUV, CCC, KCC	CE , FCC, UL , CB, TUV, CCC, KCC
Compatible Chassis	IPC-7130, IPC-7130L, IPC-7220, IPC-610, IPC-611, ACP-4000, ACP-4010, ACP-4320, ACP-4340, ACP-4360, IPC-622, HPC-7442	IPC-7130, IPC-7130L, IPC-7220, IPC-610, IPC-611, ACP-4000, ACP-4010, ACP-4320, ACP-4340, ACP-4360, IPC-622, HPC-7442	ACP-4000, ACP-4010, IPC-622, HPC-7442	HPC-7242, HPC-7282, HPC-7320, HPC-8316	HPC-7242, HPC-7282, HPC-7320, HPC-8316

CPU Coolers

Intel® LGA1150/1151/1155/1156



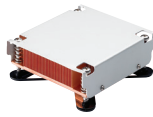
Model Name	1960049408N001	1960047831N001	1960052651N021	1960047669N001
Thermal Dispatch Performance	Intel LGA1156/1155/1150/1151 84W	Intel LGA1156/1155/1150/1151 95W	Intel LGA 1156/1155/1150/1151 80W	Intel LGA1156/1155/1150/1151 95W
Fan	-	7 cm/35.5CFM 5400+/- 10% RPM	6 cm/28.77 CFM 5800 +/- 10% RPM	8 cm/57.5 CFM 4500+/- 10% RPM
Heatsink Material	Copper	Copper	Aluminum	Aluminum & Copper heart
Heatsink Dimensions	85 x 85 x 26 mm (3.35" x 3.35" x 1.02")	83 x 83 x 39.26 mm (3.27" x 3.27" x 1.54")	90x 90x 68 mm (3.54" x 3.54" x 2.68")	90 x 90 x 35 mm (3.54" x 3.54" x 1.38")
Dimensions	-	83 x 83 x 55.73mm (3.27" x 3.27" x 2.17")	90x 90x 68 mm (3.54" x 3.54" x 2.68")	120 x 120 x 77 mm (4.72" x 4.72" x 3.03")
Weight	611 g	582 g	417g	500 g
Minimum Chassis Height	1U	2U	2U/4U	4U
Recommended Chassis	ACP-1010/1320 HPC-7140/7180	Backplane version of chassis	Motherboard/ backplane version of chassis	Motherboard version of chassis
Supported Boards	AIMB-580/701/780/781/782/784; PCE-5125/5126/5127/7127/5026 ASMB-584/585/781/782/784/785	AIMB-580/581/582; PCE-5125/5126/5127/ 5026/7127/5128/7128	AIMB-705/785 PCE-5029/5129/7129/3029/4129 ASMB-584/585/781/782/784/785	AIMB-580/581/582/701/780/ 781/782/784



Model Name	1960053065N001	1960053207N001
Thermal Dispatch Performance	Intel LGA1155/1150/1151 55W Up to Core i3	Intel LGA1155/1150/1151 65W Up to Core i7
Fan	77 x 75 x 15.4 mm/11.83 CFM 5500+/- 10% RPM	9 cm/45.09 CFM 4400 +/- 10% RPM
Heatsink Material	Copper	Aluminum & Copper
Heatsink Dimensions	84 x 84 x 13 mm (3.32" x 3.32" x 0.51")	92.9 x 92.2 x 46 mm (3.67" x 3.67" x 1.82")
Dimensions	84 x 84 x 28 mm (3.32" x 3.32" x 1.11")	92.9 x 92.2 x 46 mm (3.67" x 3.67" x 1.82")
Weight	382g	250g
Minimum Chassis Height	1U	1.5U
Recommended Chassis	IPC-3026, IPC-3012	IPC-3026, IPC-3012
Supported Board	PCE-3026/3028/3029/4128/4129 AIMC-3200/3201/3420/3421	PCE-3026/3028/3029/4128/4129 A1IS-1240/1440/3400/3410 AIMC-3200/3420

CPU Coolers

Intel® Pentium 4 LGA775



Model Name	1960013266T000	1750000332	1750000334
Thermal Dispatch Performance	Pentium 4: Up to 3.4 GHz (90 nm, 84 W, L2: 1 MB) Core 2 Duo: Up to 3.33 GHz (65 nm, 65 W, L2: 4 MB)	Pentium 4: Up to 3.8 GHz (90 nm, 115 W, L2: 1 MB) Core 2 Duo: Up to 3.33 GHz (65 nm, 65 W, L2: 4 MB) Core 2 Quad: Up to 3 GHz (45 nm, 95 W, L2: 12 MB)	Pentium 4: Up to 3.8 GHz (90 nm, 115 W, L2: 1 MB) Core 2 Duo: Up to 3.33 GHz (65 nm, 65 W, L2: 4 MB)
Fan	-	7 cm / 35.5 CFM 5,400 ± 10% RPM	8 cm / 57.7 CFM 4,500 ± 10% RPM
Heatsink Material	Copper	Copper	Aluminum fins & copper heart
Heatsink Dimensions	80 x 80 x 27 mm (3.15" x 3.15" x 1.06")	83 x 83 x 15 ~ 39 mm (3.27" x 3.27" x 0.59" ~ 1.54")	90 x 90 x 32 mm (3.54" x 3.54" x 1.26")
Dimensions	90 x 82.4 x 26 mm (3.54" x 3.24" x 1.02")	83 x 83 x 55 mm (3.27" x 3.27" x 2.17")	110 x 110 x 67 mm (4.33" x 4.33" x 2.64")
Weight	554 g	560 g	550 g
Minimum Chassis Height	1U	2U	4U
Recommended Chassis	ACP-1320 series	Backplane version of chassis	Motherboard version of chassis
Supported Boards	AIMB-766/764/762, PCA-6194/6011/6010, PCE-5124	PCA-6194/6011/6010, PCE-5124	AIMB-256/566/564/562769/767/766/764/763/762

Intel® Xeon® LGA2011



Part number	1960055362N001	1960065684N001	1960063011N001	1960063011N011	1960065593N001	1960065591N001	1960057226N001
Thermal Dispatch Performance	Up to 145W	Up to 160W	Up to 135W	Up to 120W	Up to 135W	Up to 135W	Up to 95W
Fan	6cm / 38.8CFM 6800 ± 10% RPM	9cm/108.08CFM 5000 ± 10% RPM	6cm/50.40CFM 9000± 10% RPM	6cm/50.40CFM 9000+/- 10% RPM (Puller Fan)	-	-	-
Heatsink Material	Aluminum Fins & Cu Block with 3 Heat Pipes	Aluminum Fins & Copper base with 3 Heat Pipes	Aluminum fins soldered Copper base with Heatpipe	Aluminum fins soldered Copper base with Heatpipe	Copper with vapor chamber	Copper with vapor chamber	Aluminum fins soldered Copper base with Heatpipe
Heatsink Dimensions (L x W x H)	90.0 x 90.0 x 63.9 mm	88.2 x 88.2 x 112.15 mm	107 x 70 x 64.0 mm	107 x 70 x 64.0 mm	106 x 82 x 27 mm	106 x 82 x 27 mm	90 x 90 x 25.5 mm
Dimensions	90.0 x 90.0 x 65.6 mm	88.2 x 88.2 x 112.15 mm	94.0 x 70.0 x 64.0 mm	94.0 x 70.0 x 64.0 mm	106 x 82 x 27 mm	106 x 82 x 27 mm	90 x 90 x 25.5 mm
Weight	413g	583g	319g	319g	405g	385g	197g
Minimum Chassis Height	2U	4U	2U	2U	1U	1U	1U
Supported Boards	ASMB-823/913/920/923	ASMB-823/913/920/923	ASMB-822/922/813	PCE-9228	ASMB-822/813 & 922 (For CPU1)	ASMB-922 (For CPU0)	ASMB-823/913/920/923
Remark	Square Type	Square Type	Narrow Type	Narrow Type	Narrow Type	Narrow Type	Square Type

Keyboards



IPC-KB-6307
105-key Keyboard with Touchpad

- 105-key, supports Windows key
- Built-in pressure activated touchpad, fully compatible with Windows, supporting plug & play
- Spiral cable with PS/2 keyboard & mouse connector
- Dimensions (W x H x D): 392 x 26 x 255 mm (15.4" x 1" x 10")
- Weight: 2 kg (8.8 lb)
- CE compliant
- Language: English
- P/N: IPC-KB-6307



IPC-KB-6312
Rackmount 105-key Keyboard with Touchpad

- 105-key, supports Windows key
- Built-in pressure activated touchpad, fully compatible with Windows, supporting plug & play
- Spiral cable with PS/2 keyboard & mouse connector
- 19" rackmount
- Height: 1U (44.4 mm, 1.75")
- Ball-bearing slide rail with handle and lock
- Dimensions (W x H x D): 482 x 44.4 x 360 mm (19" x 1.75" x 14.2")
- Language: English
- P/N: IPC-KB-6312 (beige keyboard / beige rack)
IPC-KB-6312B (beige keyboard / black rack)



IPC-KB-6302
Compact 104-key Keyboard

- 104-key with tactile response
- AT & PS/2 compatible
- Over 20 million life cycles
- Spiral cable with 6-pin PS/2 keyboard connector (not including PS/2 to 5-pin DIN PC/AT adapter)
- Dimensions (W x H x D): 400 x 40 x 188 mm (15.7" x 1.6" x 7.4")
- Language: English
- P/N: IPC-KB-6302



IPC-KB-6304
Compact 88-key Keyboard

- 88-key with membrane structure
- PC/AT, PS/2, DOSV compatible
- 5 million life cycles
- Spiral cable with 6-pin PS/2 keyboard connector (not including PS/2 to 5-pin DIN PC/AT adapter)
- Dimensions (W x H x D): 287 x 29 x 140 mm (11.3" x 1.14" x 5.5")
- Weight: 0.5 kg (1.1 lb)
- CE, FCC, UL, CSA, CNS compliant
- Language: English
- P/N: IPC-KB-6304



IPC-KB-6305
Compact 88-key Keyboard with Touchpad

- 88-key with membrane structure
- PC/AT, PS/2, DOSV compatible
- Built-in touchpad for pointing input device
- 5 million life cycles
- Spiral cable with PS/2 keyboard & mouse connector (not including PS/2 to PC/AT and PS/2 to DB-9 adapters)
- Dimensions (W x H x D): 289 x 27 x 227 mm (11.4" x 1.06" x 8.9")
- Weight: 0.8 kg (1.76 lb)
- CE, FCC, UL, CSA, CNS compliant
- Language: English
- P/N: IPC-KB-6305

Accessories

Slide Rail



For 1U rackmount chassis

- 26" P/N: 9680009153
- Maximum acceptable load: 25kg
- 1 pair included



For 2U and higher rackmount chassis

- 26" P/N: 9680006905
- Maximum acceptable load: 45kg
- 1 pair included

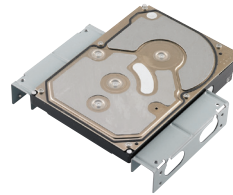
Industrial Disk Tray/Bay



IPC-DT-5121/ IPC-DT-5121B

Shockproof industrial hard disk drive tray with cooling fan and optional front USB and PS/2 interfaces

- Accepted Device: 1 x 3.5" HDD (only for 9.5mm thickness)
- Cooling Fan: 1 x 4 cm
- Color (Codes): Gray (414U), Black (4C2X)
- Dimensions (W x H x D): 148.5 x 42.6 x 171 mm³



989K008733

A frame to securely fix a 3.5" HDD in a 5.25" drive bay

- Accepted Device: 3.5" HDD x 1



IPC-DT-3120E

Mobile rack for converting a 3.5" drive bay to dual 2.5" SATA HDD/SSD trays

- Accepted Device: 2 x 2.5" SATA HDD/SSD (only for HDD/SSD thickness less than 9.6 mm)
- Dimensions (W x H x D): 101.6 x 25.4 x 139 mm³



989K008734

A frame to securely fix two 2.5" HDDs/SSDs in a 3.5" drive bay

- Accepted Device: 2.5" SATA HDD/SSD x 2 (only for HDD thickness less than 9.6 mm)



9892200013E

Module to convert a 5.25" drive bay to a slim ODD and a 3.5" drive bay

- Accepted Device: 3.5" device x 1, slim ODD x 1



96RACK-5SS-CAGE-CR

Mobile rack for converting one 5.25" drive bay to four 2.5" SAS/SATA HDD/SSD trays

- Accepted Device: 2.5" SAS/SATA HDD/SSD x 4
- Dimension (W x H x D): 146 x 41 x 170 mm³



IPC-DT-5230E

Mobile rack for converting dual 5.25" drive bays to three 3.5" SAS/SATA HDD trays

- Accepted Device: 3.5" SAS/SATA HDD x 3 or 2.5" SAS/SATA HDD/SSD x 3
- Cooling Fan: 1 x 8 cm
- Dimensions (W x H x D): 146.5 x 86 x 225 mm³



96RACK-5-SS-CR-B2

Mobile rack for converting one 5.25" drive bay to one slim ODD and two 2.5" SAS/SATA HDD/SSD trays

- Accepted Device : slim ODD x 1 , 2.5" SAS/SATA HDD/SSD x 2
- Dimension (W x H x D): 146 x 41.3 x 170 mm³

Add-on Card Hold Down Kit



98RKBTOS09E

Add-on card hold down kit (short)

- Bracket Q'ty of each kit : 5 pcs
- For PCI add-on card with height 72.3mm ~ 87.3mm and PCIe add-on card with height 81.7mm ~ 91.8mm



98RKBTOS10E

Add-on card hold down kit (long)

- Bracket Q'ty of each kit : 5 pcs
- For PCI add-on card with height 54.8mm ~ 75.7mm and PCIe add-on card with height 59.3mm ~ 80.2mm

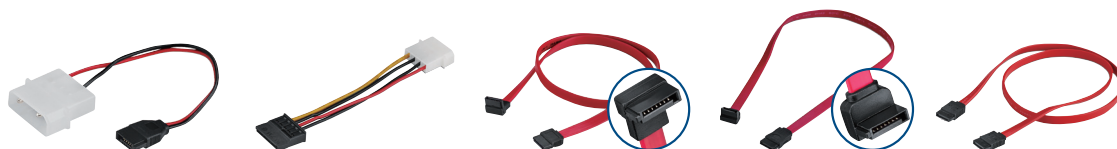
Accessories

USB Cables



Part Number	1700008461	1700003195	1700002204	1700014398	1700020277-01
Description	USB 2.0 cable with 4 ports	USB 2.0 cable with 2 ports	USB 2.0 cable with 2 ports	USB 2.0 cable with 4 ports	USB 3.0 cable with 2 ports
Cable Length	30.5 cm (12.01")	17.5 cm (6.89")	27 cm (11.92")	30.5 cm (12.01")	30 cm (11.81")
Remark	For ATX/Micro-ATX MB, full-sized SBC			For half-sized SBC	For ATX/Micro-ATX MB, full/half-sized SBC

SATA Cables



Part Number	96CB-SATAPOWER-6P1	1700022749-11	1700019381	1700007351	1700003194
Description	SATA power cable for slim ODD	SATA power cable for HDD/SSD	SATA data cable (right angle)	SATA data cable (right angle)	SATA data cable
Cable Length	10 cm (3.94")	10 cm (3.94")	55 cm (21.65")	40 cm (15.75")	60 cm (23.62")
Remark	Big 4 P to SATA power cable for Slim ODD	Big 4 P to SATA power cable for HDD/SSD	SATA data cable with 1 right angle and 1 vertical connectors	SATA data cable with 1 right angle and 1 vertical connectors	SATA data cable with vertical connectors with locks

COM and Printer Ports Cables



Part Number	1701092300	1701090401	1700020294-01	1700008762
Description	COM cable with 2 ports	COM cable with 1 port	Printer (Parallel) port cable	COM cable with 2 ports
Cable Length	28.5 cm (11.22")	40 cm (15.75")	42.0 cm (16.54")	22.5 cm (8.86")
Remark	For ATX/Micro-ATX MB, full-sized SBC		For ATX/Micro-ATX MB, full-sized SBC	For half-sized SBC

Accessories

Video Cables



Part Number	PCE-DP10-00A1E	1700021831-01	1700008822-11
Description	Display port cable	DP to DVI port cable	DVI to DVI port cable
Cable Length	25 cm (9.84")	30 cm (11.81")	30 cm (11.81")
Remark	Video cable for converting on board DP connector to external DP port supporting DP 1.1a/1.2 signaling	Video cable for converting on board DP connector to external DVI-D port	Video cable for converting on board DVI connector to external DVI-D port

Other Cables



Part Number	1700006915	1700006916	1700024754-01
Description	Cable for ACP-4000MB front LED board	Cable for IPC-610MB-H front LED board	Power cable for GPU card
Cable Length	60 cm (23.62")	60 cm (23.62")	10 cm
Remark	For those Advantech motherboards with VOLT1 connector too far away from the chassis LED board		2*B4P Molex power connector to 6+2P PCIe power cable for GPU card